



8 Arkle Avenue, Thatcham, RG19 3UA

A spacious four/five bedroom detached home, situated within a peaceful cul-da-sac, close to both Newbury and Thatcham town, with views over fields, off street parking and private rear garden.

As you enter the property, the dining room is to your left. With a large bay window to the front, the room is flooded with natural light. The dining room is open plan with the kitchen. The kitchen consists of cream cabinets and a wood effect worktops with french doors leading out onto the rear garden. The living room is of a great size and flows brilliantly into the conservatory, which again provides access to the rear garden. The garage has been converted to a secondary living room but could easily be converted back to a garage if needs be. Downstairs also benefits from a cloakroom.

To the first floor are four great sized double bedrooms. The master overlooks the neighbouring fields. The family bathroom consists of a separate shower and bath with neutral tiling.

To the front of the property is a large driveway for several vehicles with a part converted garage offering great storage space. To the rear is a great sized private garden with two patio areas, perfect for hosting. The rest of the garden is mainly laid to lawn.



Winkworth

AT A GLANCE

1306ft² / 121.2m²

Living Room

Open Plan Kitchen Diner

Conservatory

Second Living Room/Bedroom 5

Four Double Bedrooms

Family Bathroom

Private Rear Garden

Parking for Several Vehicles

UTILITIES

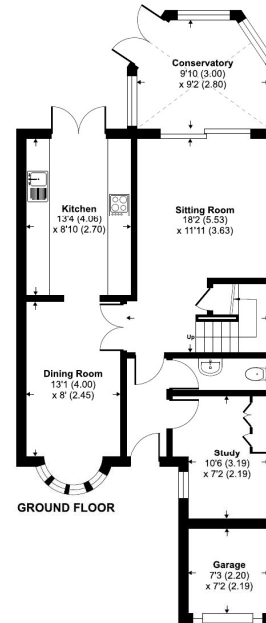
The property is connected to all mains and operates on gas central heating. There is ultrafast broadband in the area and there are no known mobile coverage issues.

EPC - D

West Berkshire Council Tax Band -E

DIRECTIONS

What3Words///follow.bring.privately



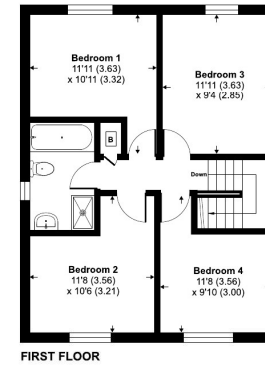
Arkle Avenue, Thatcham, RG19

Approximate Area = 1256 sq ft / 116.6 sq m

Garage = 50 sq ft / 4.6 sq m

Total = 1306 sq ft / 121.2 sq m

For identification only - Not to scale



Floor plan produced in accordance with RICS Property Measurement 2nd Edition, incorporating International Property Measurement Standards (IPMS2 Residential). © richcom 2025. Produced for Winkworth. REF: 1332428

Winkworth



Newbury Office

43 Northbrook Street, Newbury, Berkshire RG14 1DT

01635 552552 | newbury@winkworth.co.uk

[winkworth.co.uk/newbury](https://www.winkworth.co.uk/newbury)

Winkworth

See things differently.