



## Chevening Road, NW6

£475,000 *Share of Freehold*



A well presented and spacious one bedroom flat, with private south facing garden and additional outbuilding.

### KEY FEATURES

- 645 SQFT
- PRIVATE SOUTH FACING GARDEN
- OUTBUILDING
- NO UPPER CHAIN
- SHARE OF FREEHOLD
- CLOSE TO AMENITIES & TRANSPORT LINKS



Kensal Rise & Queens Park

0208 960 4947 | [kensalrise@winkworth.co.uk](mailto:kensalrise@winkworth.co.uk)

**Winkworth**

for every step...

Winkworth wishes to inform prospective buyers and tenants that these particulars are a guide and act as information only. All our details are given in good faith and believed to be correct at the time of printing but they don't form part of an offer or contract. No Winkworth employee has authority to make or give any representation or warranty in relation to this property. All fixtures and fittings, whether fitted or not are deemed removable by the vendor unless stated otherwise and room sizes are measured between internal wall surfaces, including furnishings.



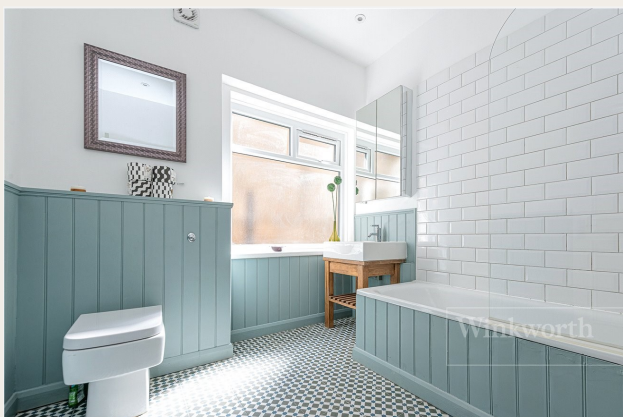


## DESCRIPTION

This wonderful garden flat is spread across 645 sq ft and features a private front entrance, with spacious open-plan kitchen, living and dining room dining area, with windows on both sides that flood the space with natural light – this is ideal for entertaining. The generously sized bedroom offers plenty of room for wardrobes and further storage, as well as providing direct access to the private rear garden. The bathroom is a well-appointed three piece suite. A wide entrance hall includes built-in utility space and ample storage. Outside, the private rear garden is framed by mature trees and offers a perfect setting for barbecues and outdoor entertaining. Being directly south facing, it is a great sun trap. An additional outbuilding adds flexibility, ideal for use as a

studio, office, or gym.

The property further benefits from no upper chain, and share of freehold.







## LOCATION

Chevening Road is one of Queen's Park's most sought-after streets, offering close proximity to the park and excellent transport links via the London Overground at Kensal Rise or the Bakerloo line at Queen's Park and Kensal Green. A variety of amenities can be found on the popular Chamberlayne Road and nearby Salusbury Road.

For more information, scan the QR code or visit the link below



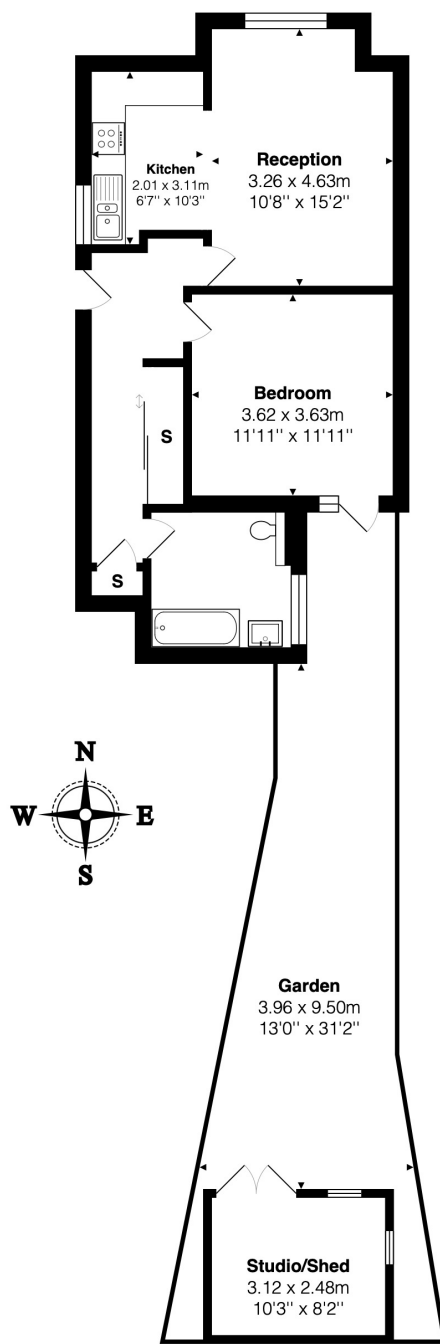
<https://www.winkworth.co.uk/sale/property/KQP240349>

Where no figures are shown, we have been unable to ascertain the information. All figures that are shown were correct at the time of printing.

## MATERIAL INFO

**Tenure:** Share of Freehold  
**Service Charge:** Ask Agent  
**Ground Rent:** Ask Agent  
**Council Tax Band:** C  
**EPC rating:** C

Score	Energy rating	Current	Potential
92+	A		
81-91	B		
69-80	C		
55-68	D	70 C	78 C
39-54	E		
21-38	F		
1-20	G		



**Lower Ground Floor**

Total Area: 59.9 m<sup>2</sup> ... 645 ft<sup>2</sup> (excluding garden)

All measurements are approximate and for display purposes only

**Kensal Rise & Queens Park**

0208 960 4947 | [kensalrise@winkworth.co.uk](mailto:kensalrise@winkworth.co.uk)

**Winkworth**

for every step...

Winkworth wishes to inform prospective buyers and tenants that these particulars are a guide and act as information only. All our details are given in good faith and believed to be correct at the time of printing but they don't form part of an offer or contract. No Winkworth employee has authority to make or give any representation or warranty in relation to this property. All fixtures and fittings, whether fitted or not are deemed removable by the vendor unless stated otherwise and room sizes are measured between internal wall surfaces, including furnishings.