



ALTIMA COURT, EAST DULWICH ROAD, EAST DULWICH, SE22
£525,000 LEASEHOOLD

**A LARGE, SPACIOUS, TWO DOUBLE BEDROOM
FLAT SITUATED WITHIN A HIGHLY SOUGHT
AFTER BLOCK IN SE22.**

Dulwich | 020 8299 2722 | dulwich@winkworth.co.uk

Winkworth

winkworth.co.uk

See things differently



AT A GLANCE

DESCRIPTION:

A large, spacious, two double bedroom flat situated within a highly sought after block in SE22. This lovely flat comprises two large double bedrooms, a large three piece family bathroom, wood flooring throughout and a large open plan kitchen/reception. The property offers a private garden which is south facing and ideal for evening entertaining. The location is superb, nestled perfectly between Lordship Lane and Bellenden Road and also between Goose Green Park and Peckham Rye Park. Transport links are provided via Peckham Rye for the overground and East Dulwich for direct links to London Bridge.

- Two Double Bedrooms
- Ground Floor Modern Flat
- Open Plan Kitchen-Living
- Modern Bathroom
- Private Garden
- Off Street Parking
- Leasehold
- Chain Free



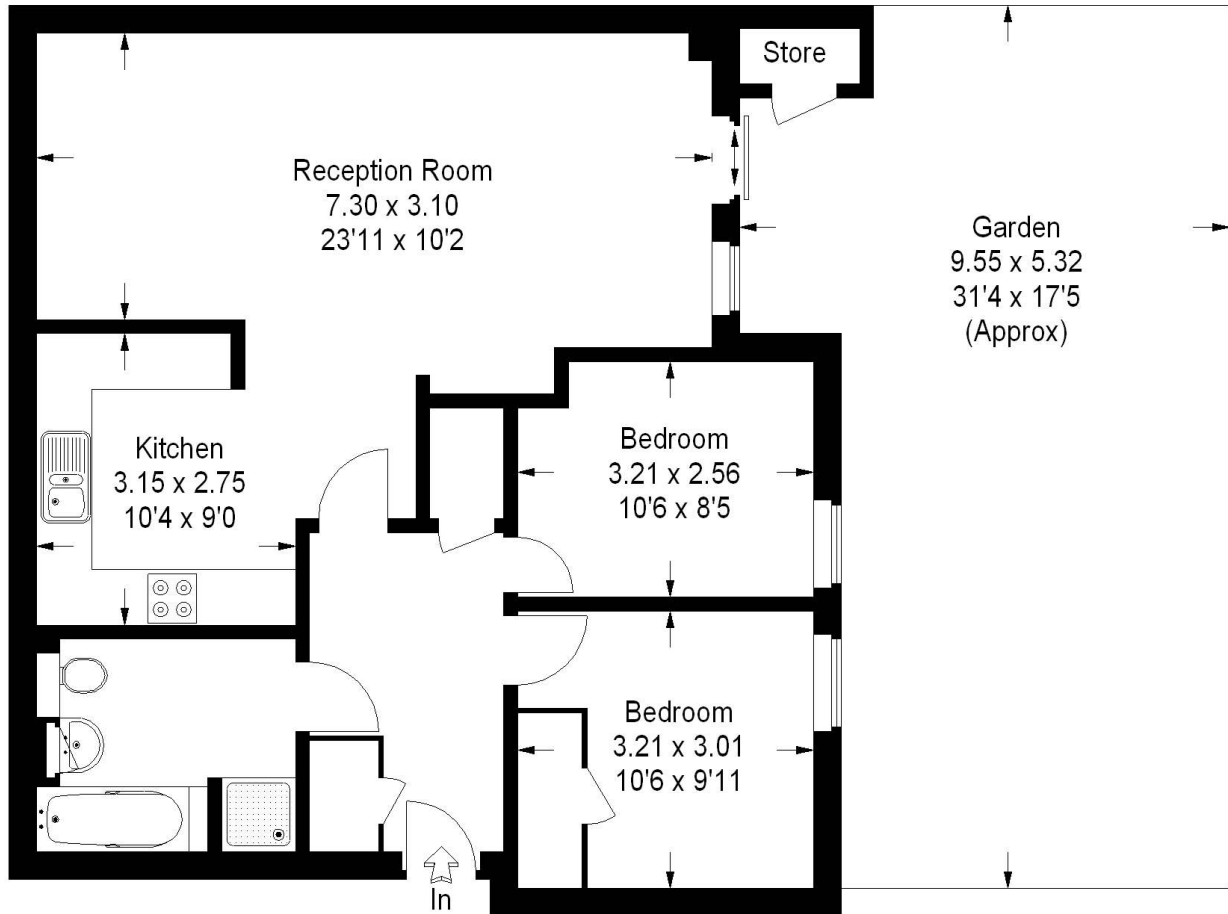
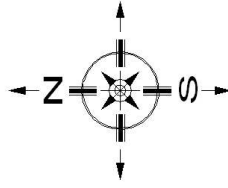


East Dulwich Road, SE22

Approximate Gross Internal Area :- 72 sq m / 775sq ft

Store :- 1 sq m / 11 sq ft

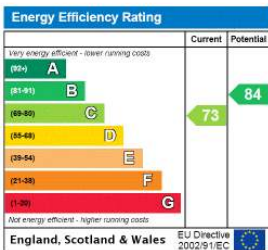
Total :- 73 sq m / 786 sq ft



FLOORPLANZ © 2012 0845 6344080 Ref 99966

This plan is for layout guidance only. Not drawn to scale unless stated. Windows & door openings are approximate. Whilst every care is taken in the preparation of this plan, please check all dimensions, shapes & compass bearings before making any decisions reliant upon them.

This floorplan is for illustration purposes only and is not to scale. The position and size of doors, windows, appliances and other features are approximate.



Dulwich | 020 8299 2722 | dulwich@winkworth.co.uk



winkworth.co.uk

See things differently

Winkworth wishes to inform prospective buyers and tenants that these particulars are a guide and act as information only. All our details are given in good faith and believed to be correct at the time of printing but they don't form part of an offer or contract. No Winkworth employee has authority to make or give any representation or warranty in relation to this property. All fixtures and fittings, whether fitted or not are deemed removable by the vendor unless stated otherwise and room sizes are measured between internal wall surfaces, including furnishings.