

THE STOREHOUSE, HACKNEY ROAD, LONDON, E2
OFFERS IN EXCESS OF £850,000 LEASEHOLD

FOUR BEDROOM THREE BATHROOM APARTMENT IN THE HEART OF SHOREDITCH

Shoreditch | 020 7749 7650 | shoreditch@winkworth.co.uk

Winkworth

winkworth.co.uk

See things differently



DESCRIPTION:

Rented Till Sept 2024

Built into a converted warehouse is this rare to market four-bedroom three-bathroom contemporary apartment spanning nearly 1,250sqf and comes with over 6% rental yield. The apartment boasts well-proportioned rooms throughout with an impressive open plan kitchen/living room area which is the standout feature of this apartment. The property benefits from dual aspect windows allowing plenty of natural light to fill the room.

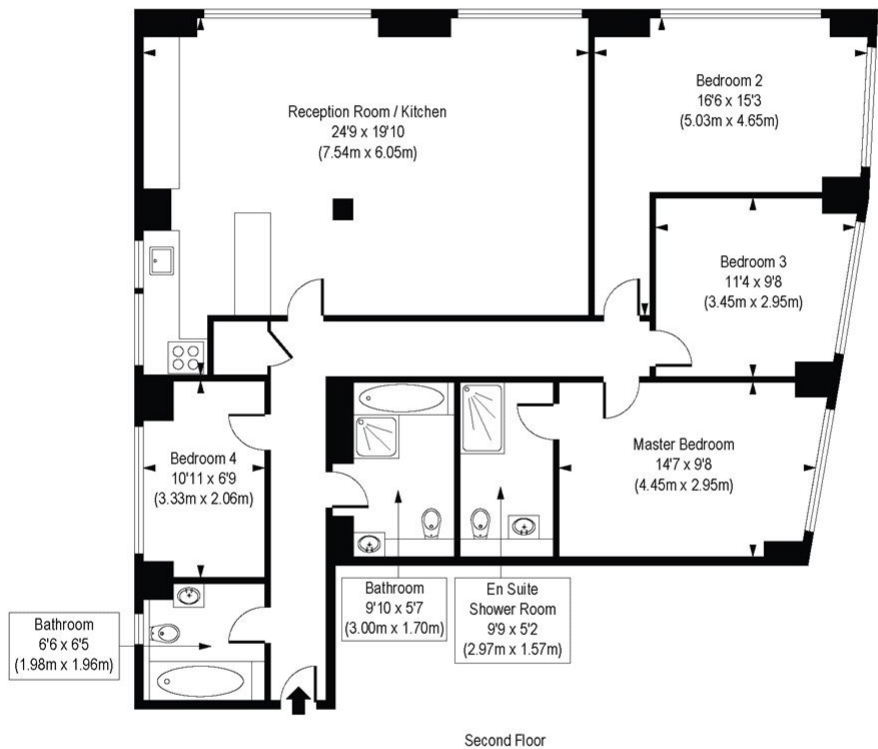
The property also benefits from under floor heating, a modern fully fitted kitchen with built in appliances including; fridge/freezer, washing machine, dishwasher, electric hob/oven and plenty of cupboard space. The bedrooms are all generous in size, light and bright and the three bathrooms (one en suite) are modern with floor to ceiling tiles, wall mounted vanity cupboards, chrome towel rails and spotlights.

Located at the top end of Hackney road and moments from Shoreditch High Street and Old Street means this apartment is ideally located. You have a wealth of local amenities on your doorstep and you are a short distance from Brick Lane and Spitalfields market with an array of boutique shops and restaurants. You are also within close proximity to Old Street and Liverpool Street underground stations as well as Hoxton and Shoreditch High Street Overground stations.

Winkworth

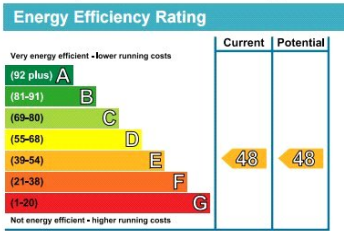


Hackney Road, E2
Approx. Gross Internal Floor Area 1243 sq. ft / 115.50 sq. m



COMPLIANT WITH BICS CODE OF MEASURING PRACTICE. Floorplan is for illustrative purposes only and is not to scale. Every attempt has been made to ensure the accuracy of the floorplan shown, however all measurements, fixtures, fittings and data shown are an approximate interpretation for illustrative purposes only. Liability for errors, omissions or mis-statement through negligence or otherwise is hereby excluded.

This floorplan is for illustration purposes only and is not to scale. The position and size of doors, windows, appliances and other features are approximate.



Shoreditch | 020 7749 7650 | shoreditch@winkworth.co.uk



winkworth.co.uk

See things differently

Winkworth wishes to inform prospective buyers and tenants that these particulars are a guide and act as information only. All our details are given in good faith and believed to be correct at the time of printing but they don't form part of an offer or contract. No Winkworth employee has authority to make or give any representation or warranty in relation to this property. All fixtures and fittings, whether fitted or not are deemed removable by the vendor unless stated otherwise and room sizes are measured between internal wall surfaces, including furnishings.