



4 WHITELEATHER SQUARE, BILLINGBOROUGH, LINCOLNSHIRE, NG34 0QP  
**£180,000 FREEHOLD**

**Winkworth**



## WHITELEATHER SQUARE, BILLINGBOROUGH, LINCOLNSHIRE, NG34 0QP

A spacious three bedroom semi detached home with large garden in need of updating with no ongoing chain. The property offers spacious accommodation benefiting from, entrance hall, lounge, dining room, kitchen with utility room off, three generous bedrooms and bathroom with separate wc. Outside there is a large garden making this home an ideal first time purchase or investment opportunity. Billingborough is a well serviced village located 9 miles from Bourne, 9 miles from Sleaford and 15 miles from Grantham with its mainline train station to London/Kings Cross. Please call 01778 392807 for more information.

Entrance Hall

Lounge 12'1" x 11'9"

Dining Room 12'10" x 12'1"

Kitchen 11'9" x 8'4"

Utility Room 7'1" x 4'1"

First Floor Landing

Bedroom One 11'8" (narrowing to 8'7") x 11'8"

Bedroom Two 11'6" x 11'9" (narrowing to 8'2")

Bedroom Three 11'9" x 8'2"

Bathroom

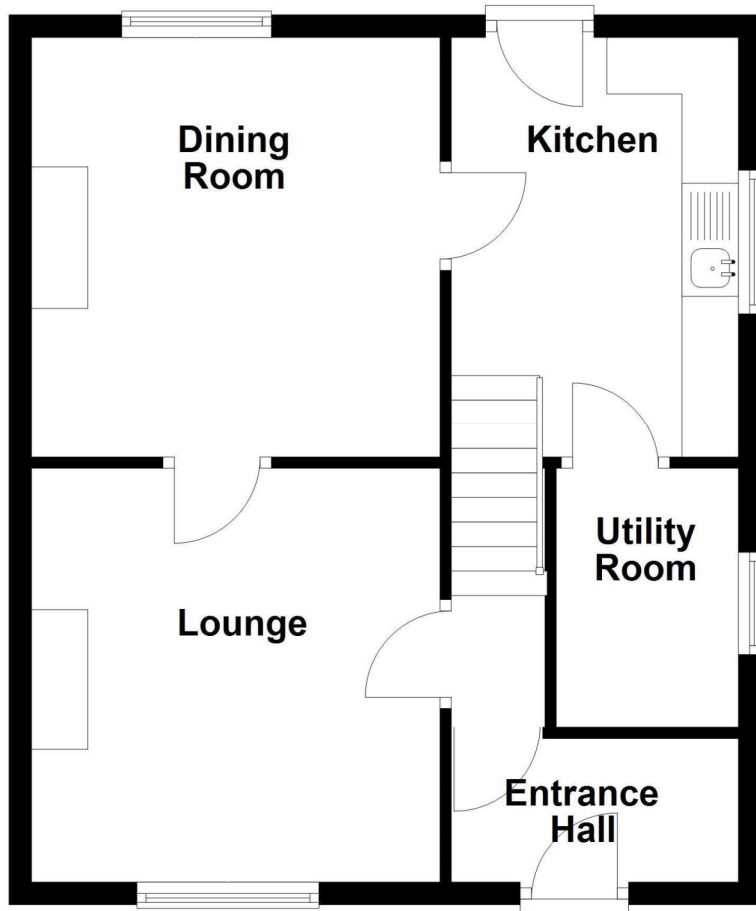
Separate WC





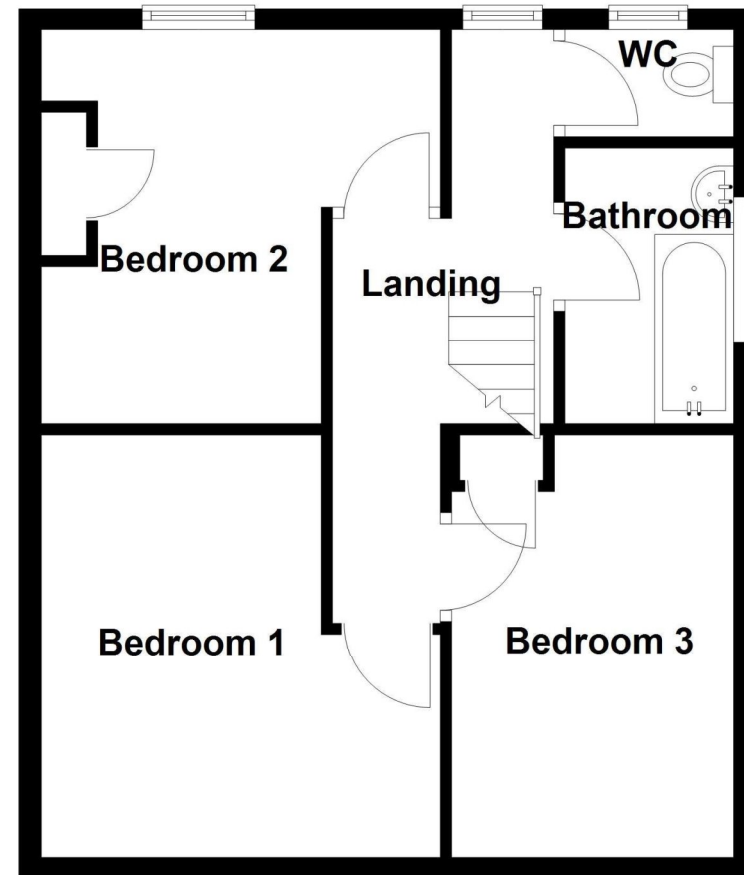
## Ground Floor

Approx. 47.1 sq. metres (506.9 sq. feet)



## First Floor

Approx. 45.1 sq. metres (485.5 sq. feet)



Total area: approx. 92.2 sq. metres (992.5 sq. feet)

Bourne | 01778392807 | [bourne@winkworth.co.uk](mailto:bourne@winkworth.co.uk)

[winkworth.co.uk](http://winkworth.co.uk)

Winkworth wishes to inform prospective buyers and tenants that these particulars are a guide and act as information only. All our details are given in good faith and believed to be correct at the time of printing but they don't form part of an offer or contract. No Winkworth employee has authority to make or give any representation or warranty in relation to this property. All fixtures and fittings, whether fitted or not are deemed removable by the vendor unless stated otherwise and room sizes are measured between internal wall surfaces, including furnishings.

**Winkworth**