



**MULLEN TOWERS, MOUNT PLEASANT, LONDON, WC1X  
£450,000 LEASEHOLD APPROX. 91 YEARS REMAINING**

**A ONE BEDROOM APARTMENT SITUATED ON THE SECOND FLOOR  
OF A RESIDENTIAL DEVELOPMENT ON MOUNT PLEASANT IN  
CLERKENWELL.**

**Service Charge: Approx. £1,500 PA | Ground Rent: Approx. £10 PA | Council Tax:  
Camden D**

Clerkenwell | 020 7405 1288 | [clerkenwell@winkworth.co.uk](mailto:clerkenwell@winkworth.co.uk)

**Winkworth**

for every step...

[winkworth.co.uk](http://winkworth.co.uk)





## DESCRIPTION:

The property comprises of a spacious, dual aspect, open plan lounge and kitchen, a larger than average bedroom and family bathroom. Mullen Tower is located in the heart of Clerkenwell only a few minutes' walk from Farringdon Underground station and the multitude of shops and amenities of the vibrant Exmouth Market. Given its location it is also conveniently located for easy access to Bloomsbury, the City, the West End and the trendy districts of Islington and Shoreditch.



**Winkworth**

for every step...

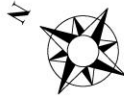




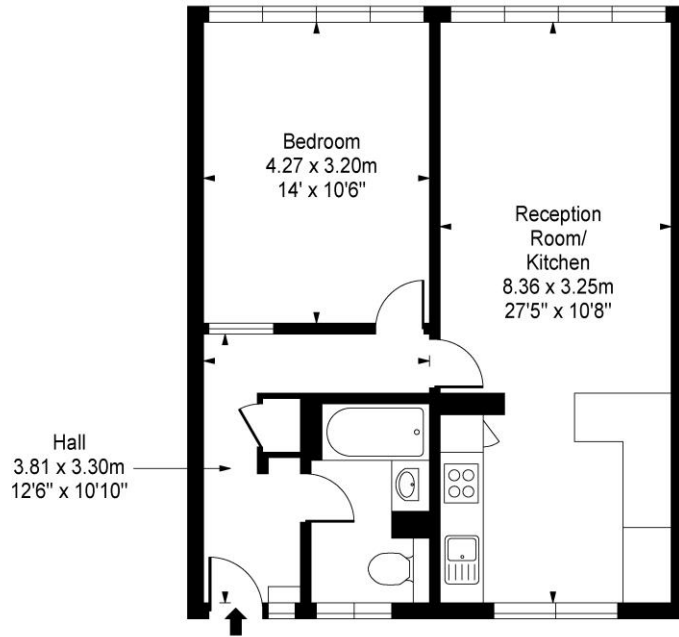
**Winkworth**

for every step...





# Mount Pleasant, WC1

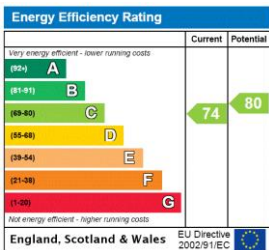


Second Floor

Approx Gross Internal Area 587 Sq Ft - 54.53 Sq M

This floor plan should be used as a general outline for guidance only and does not constitute in whole or in part an offer or contract. Any intending purchaser or lessee should satisfy themselves by inspection, searches, enquiries and full survey as to the correctness of each statement. Any areas, measurements or distances quoted are approximate and should not be used to value a property or be the basis of any sale or let.

This floorplan is for illustration purposes only and is not to scale. The position and size of doors, windows, appliances and other features are approximate.



Clerkenwell | 020 7405 1288 | clerkenwell@winkworth.co.uk

for every step...

winkworth.co.uk

Winkworth wishes to inform prospective buyers and tenants that these particulars are a guide and act as information only. All our details are given in good faith and believed to be correct at the time of printing but they don't form part of an offer or contract. No Winkworth employee has authority to make or give any representation or warranty in relation to this property. All fixtures and fittings, whether fitted or not are deemed removable by the vendor unless stated otherwise and room sizes are measured between internal wall surfaces, including furnishings.