



# Novello Close

Brighton Hill Basingstoke RG22 4LF

## Description

These three bedroom houses are popular with buyers as they offer plenty of space and are located close to a wide variety of facilities such as schools, shops and bus routes. This particular house overlooks a green open space and benefits from a garage on site.

The ground floor has a large kitchen/diner to the front with the kitchen area having lots of storage and appliance space and a stainless steel sink unit. The dining area has room for a decent size table. The living room to the rear has french doors out to the garden. Completing the ground floor is the downstairs loo.

Upstairs, there are two double bedrooms and a large single, in addition to the bathroom, which has a white suite with a shower screen over the bath.

Heading outside, there are enclosed gardens to the front and rear, with the latter being paved for ease of maintenance. The garage can be accessed from here with a door into the back. The garage has electric power and light. There are unallocated parking spaces to the rear.



**Winkworth**

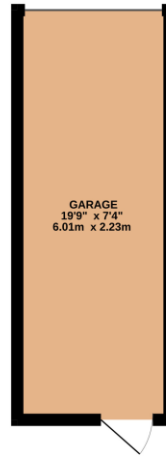
## Accommodation

Cloakroom  
Living room  
Kitchen/diner  
Three bedrooms  
Bathroom  
Garage  
Front garden  
Rear garden

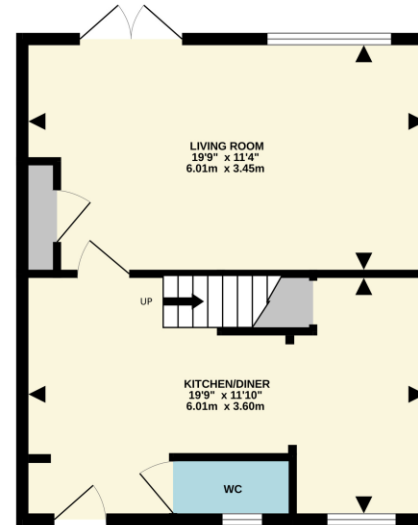
All details are given in good faith and are believed to be correct at time of printing. Winkworth give no representation as to their accuracy and potential purchasers or tenants must satisfy themselves by inspection or otherwise as to their correctness. No employee of Winkworth has authority to make or give any representation or warranty in relation to this property.

Score	Energy rating	Current	Potential
92+	A		
81-91	B		
69-80	C		
55-68	D		
39-54	E		
21-38	F		
1-20	G		

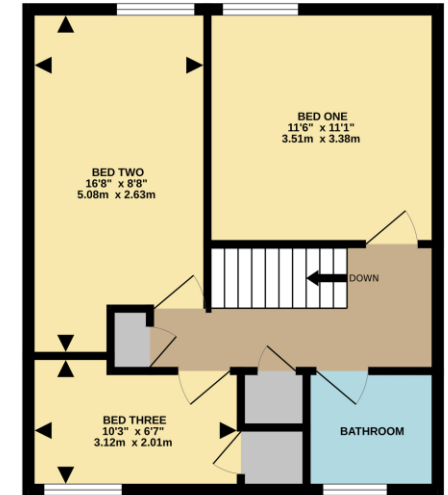
GARAGE  
145 sq.ft. (13.4 sq.m.) approx.



GROUND FLOOR  
455 sq.ft. (42.3 sq.m.) approx.



1ST FLOOR  
456 sq.ft. (42.4 sq.m.) approx.



TOTAL FLOOR AREA : 1056 sq.ft. (98.1 sq.m.) approx.

Whilst every attempt has been made to ensure the accuracy of the floorplan contained here, measurements of doors, windows, rooms and any other items are approximate and no responsibility is taken for any error, omission or mis-statement. This plan is for illustrative purposes only and should be used as such by any prospective purchaser. The services, systems and appliances shown have not been tested and no guarantee as to their operability or efficiency can be given.  
Made with Metropix ©2025



## Basingstoke Office

10B Church Street, Basingstoke, Hampshire, RG21 7QE  
01256 811730 | basingstoke@winkworth.co.uk

[winkworth.co.uk/Basingstoke](http://winkworth.co.uk/Basingstoke)

# Winkworth

See things differently.