



FINCHLEY LANE, HENDON, LONDON, NW4

GUIDE PRICE £425,000 LEASEHOLD 119 YEARS APPROX REMAINING

STUNNING TWO BEDROOM FLAT

- SERVICE CHARGE APPROX £1,100 PER ANNUM (INCLUSIVE OF BUILDINGS INSURANCE & MAINTENANCE)
- GROUND RENT APPROX £300 PER ANNUM

Hendon | 020 8202 1031 | hendon@winkworth.co.uk

Winkworth

for every step...

winkworth.co.uk



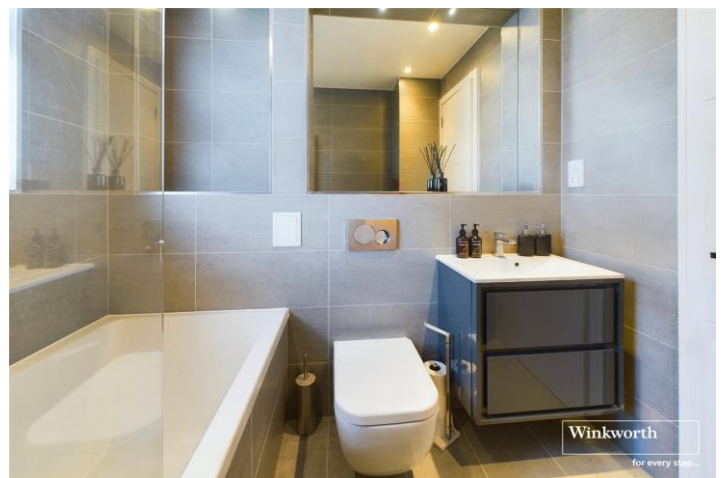
This luxurious two-bedroom flat has been beautifully designed and finished to an exceptional standard. Situated on the first floor, on the sought-after Finchley Lane, the flat is ideally positioned within easy reach of Brent Street's bustling shopping amenities and excellent transport links, making it an ideal choice for professionals and families alike.

Key features include: - Two generously sized bedrooms with ample natural light. - A modern, high-spec kitchen and living space, perfect for entertaining. - Off-street parking for added convenience. This property is a rare find and promises luxury living in a prime location. Early viewing is highly recommended to avoid disappointment.



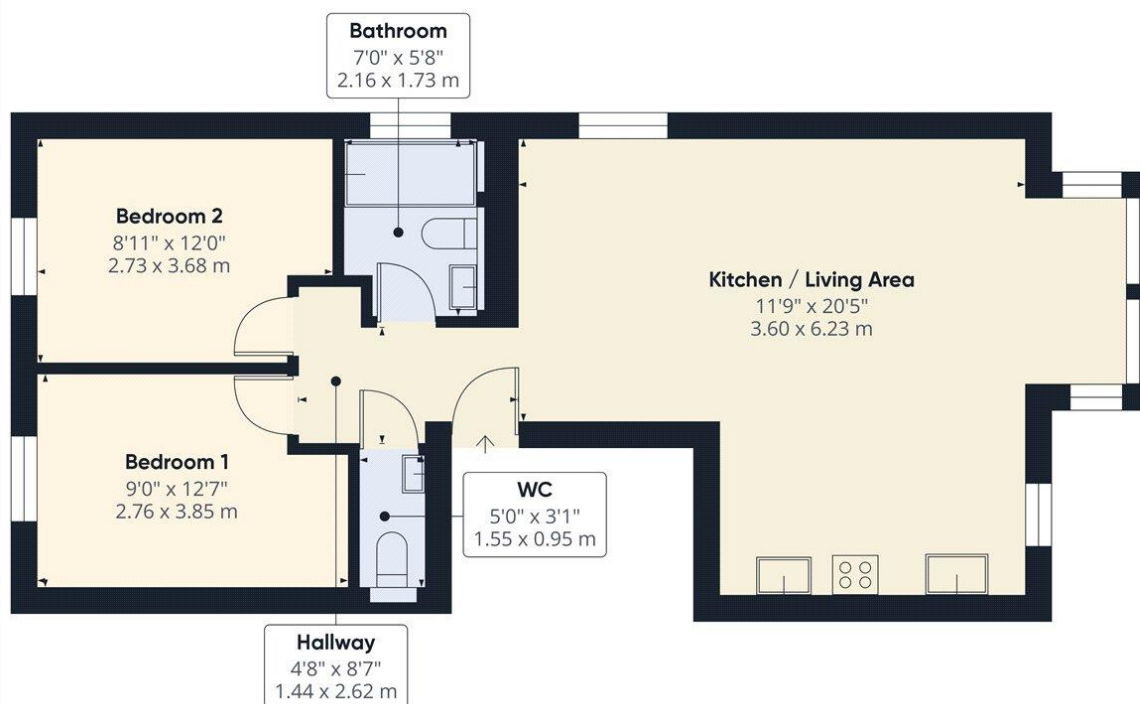
Winkworth

for every step...



Winkworth

for every step...



Approximate total area⁽¹⁾
664.67 ft²
61.75 m²

(1) Excluding balconies and terraces

While every attempt has been made to ensure accuracy, all measurements are approximate, not to scale. This floor plan is for illustrative purposes only.
Calculations are based on RICS IPMS 3C standard.

GIRAFFE 360

This floorplan is for illustration purposes only and is not to scale. The position and size of doors, windows, appliances and other features are approximate.

Tenure: Leasehold

Term: 118 Years 5 Months

Service Charge: £1100 per annum

Ground Rent: £ 300 Annually (subject to increase)

Council Tax Band: D - Barnet

Where no figures are shown, we have been unable to ascertain the information. All figures that are shown were correct at the time of printing.

Hendon | 020 8202 1031 | hendon@winkworth.co.uk

Winkworth

for every step...

winkworth.co.uk

Winkworth wishes to inform prospective buyers and tenants that these particulars are a guide and act as information only. All our details are given in good faith and believed to be correct at the time of printing but they don't form part of an offer or contract. No Winkworth employee has authority to make or give any representation or warranty in relation to this property. All fixtures and fittings, whether fitted or not are deemed removable by the vendor unless stated otherwise and room sizes are measured between internal wall surfaces, including furnishings.