



7 SOUTHMEAD HOUSE

NEWBURY RG14 7FY

A stunning nearly new two double bedroom apartment overlooking the racecourse.

Situated on the first floor with a lift the apartment has reception hall, open plan living space with fully fitted kitchen and appliances and patio doors to the full length west facing balcony.

There are also two double bedrooms both with built in wardrobes and the master having an ensuite. A family bathroom completes the accommodation.

The property comes with one allocated parking space.

No onward chain



Winkworth

AT A GLANCE

815 Square feet/ 75 square metres
Two double bedrooms
Two bath/ shower rooms
Open plan living space
Fully fitted kitchen with appliances
Parking space
Balcony
No onward chain

UTILITIES

Mains water, electricity, drainage.
Communal heating system
West Berkshire Council Band D
EPC B

LEASEHOLD DETAILS

120 Years lease remaining
£285 Ground rent pa.
£1300 Service charge pa (2021/22)
A copy of the lease is available on request

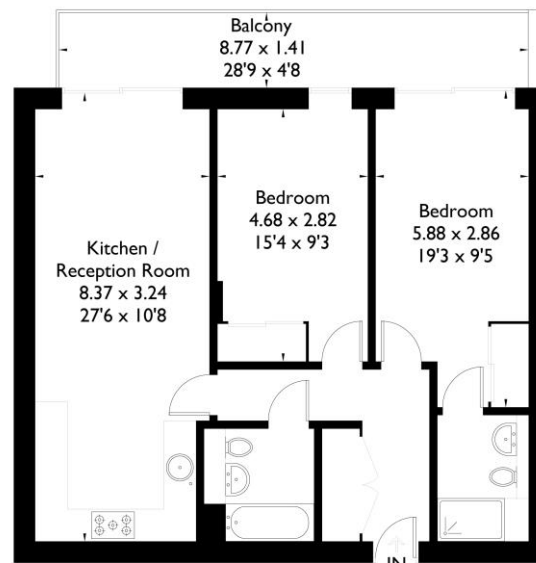
SITUATION

The property is situated on the racecourse development.

DIRECTIONS

For sat nav RG14 7FY
What three words///throw.ends.hiding

Approximate Gross Internal Area
75.7 sq m / 815 sq ft



First Floor



Newbury Office

43 Northbrook Street, Newbury, Berkshire RG14 1DT
01635 552552 | newbury@winkworth.co.uk

[winkworth.co.uk/newbury](https://www.winkworth.co.uk/newbury)

Winkworth

See things differently.