

RODWELL ROAD, EAST DULWICH, SE22
£1,250,000 FREEHOLD

**AN EXTREMELY WELL-PRESENTED FOUR-
DOUBLE BEDROOM VICTORIAN TERRACED
HOUSE SITUATED IN THE CENTRE OF EAST
DULWICH.**

Dulwich | 020 8299 2722 | dulwich@winkworth.co.uk

Winkworth



DESCRIPTION:

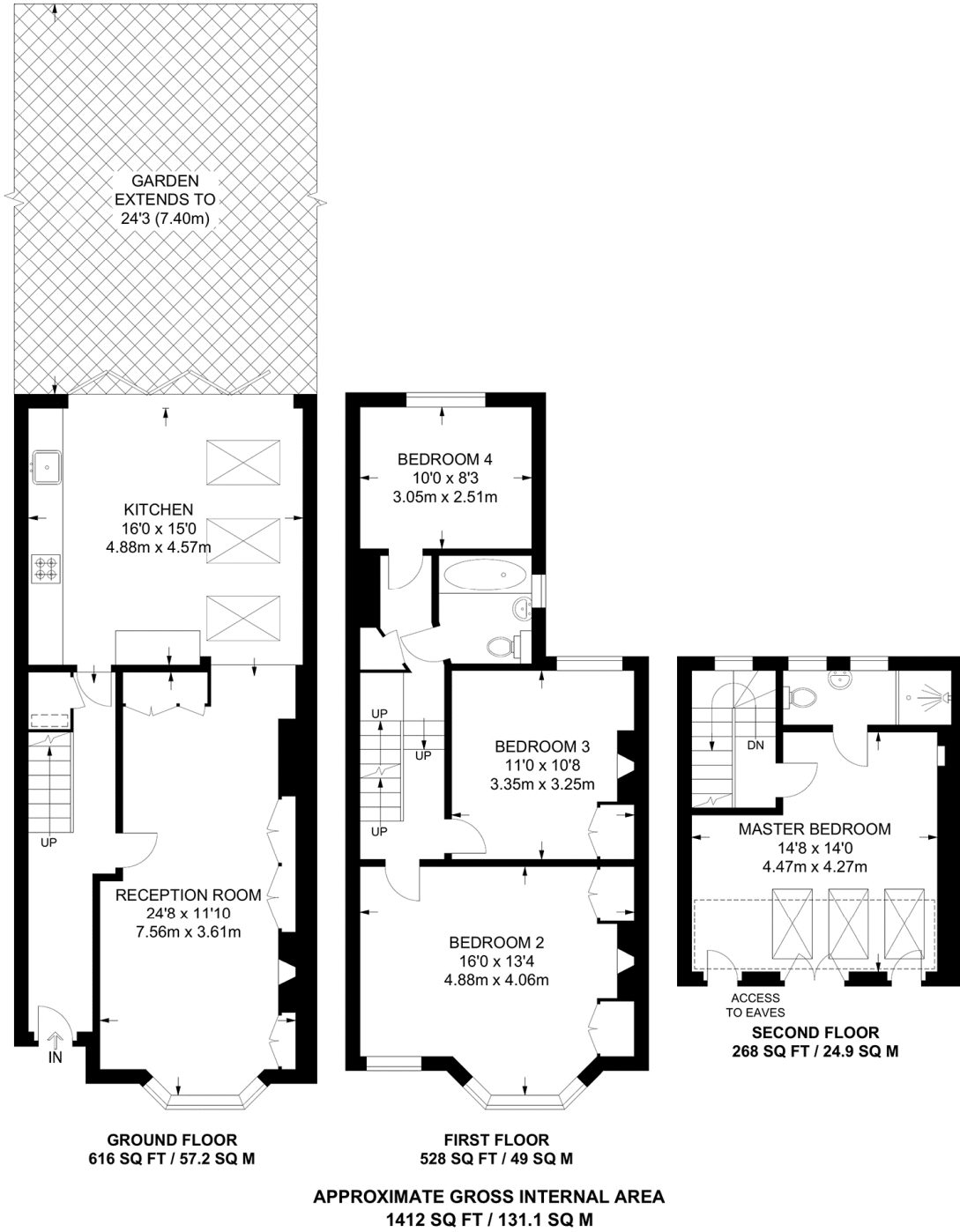
An extremely well-presented four-double bedroom, two-bathroom Victorian terraced house situated in the centre of East Dulwich close to Heber Primary School. The house offers a good double reception with high ceilings, built-in storage and a feature Victorian fireplace, a family kitchen-diner with doors out onto a private garden to the rear. Upstairs are four double bedrooms, a family bathroom and an ensuite shower room. This is a fantastic family house in a great location, with easy access to the bars and restaurants on Lordship Lane and the wide-open spaces of Dulwich Park. Transport links are provided via East Dulwich with connections into London Bridge.

AT A GLANCE

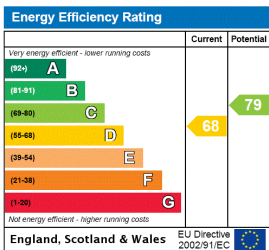
- Four Double Bedrooms
- Terraced Victorian House
- Double Reception
- Bathroom & Shower Room
- Garden
- Close To Heber Primary School
- Close To Dulwich Park
- Excellent Location







This floorplan is for illustration purposes only and is not to scale. The position and size of doors, windows, appliances and other features are approximate.



Dulwich | 020 8299 2722 | dulwich@winkworth.co.uk



winkworth.co.uk

See things differently

Winkworth wishes to inform prospective buyers and tenants that these particulars are a guide and act as information only. All our details are given in good faith and believed to be correct at the time of printing but they don't form part of an offer or contract. No Winkworth employee has authority to make or give any representation or warranty in relation to this property. All fixtures and fittings, whether fitted or not are deemed removable by the vendor unless stated otherwise and room sizes are measured between internal wall surfaces, including furnishings.