



Flat 4 Clear Waters
Southbourne, BH6 4BE
ASKING PRICE £800,000







GUIDE PRICE - £900,000

01202 434365 | southbourne@winkworth.co.uk

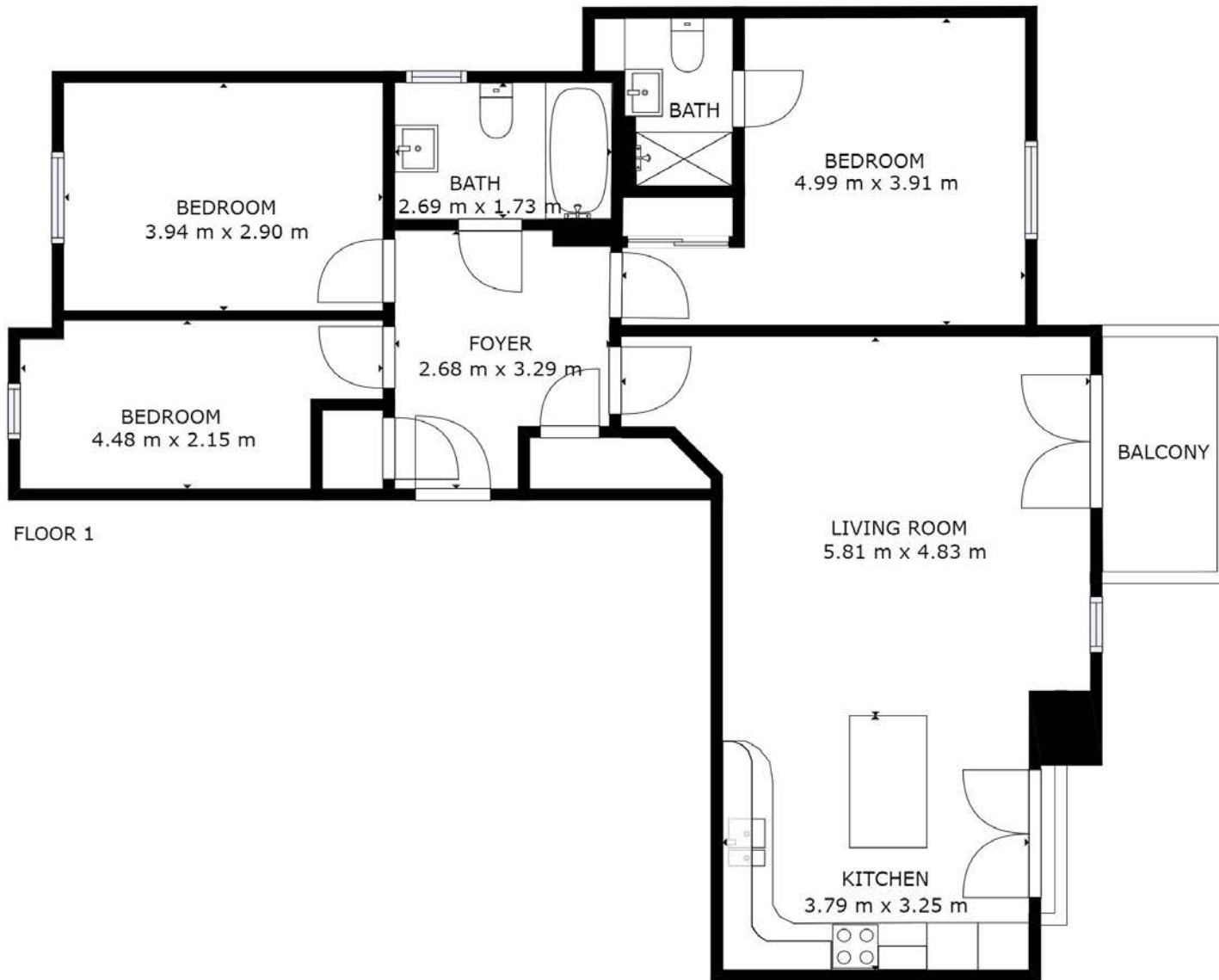
A wonderful opportunity to purchase a stunning, three bedroom sea front apartment with panoramic views of Bournemouth Bay.

Winkworth Southbourne are delighted to present a stunning three bed apartment, with arguably the best views in the area situated on Southbourne Cliff Top. The property, built in 2012 has been finished to the highest of standards and boasts a beautiful open plan kitchen and living area with a spacious balcony to one end and a Juliette balcony to the other with panoramic views of Bournemouth Bay. The fully fitted bespoke kitchen comes with integrated NEFF appliances and a large island with breakfast bar seating.

There are three good size double bedrooms, and the master bedroom is particularly spacious and benefits from a contemporary en-suite shower room and a picture window with sea views. The family bathroom is complete with an LED mirror, a large bathtub with an over head shower and ample storage. The property also benefits from an allocated parking space, along with a private lockable storage unit.

- **Amazing Sea Views**
- **Open Plan Lounge / Kitchen**
- **Two Bathrooms**
- **High-end Finishes**
- **Three Double Bedrooms**
- **Allocated Parking**
- **Lockable Storage**
- **Large Balcony**





GROSS INTERNAL AREA
FLOOR 1: 102 m²
TOTAL: 102 m²

SIZES AND DIMENSIONS ARE APPROXIMATE. ACTUAL MAY VARY.





Southbourne is located on the south-east suburb of Bournemouth and neighbours both Christchurch and Boscombe. The area enjoys its own shopping experience with the main high street offering a varied range of shops, restaurants and bars. Southbourne itself enjoys the award-winning blue flag sandy beaches with a level walk promenade extending from Hengistbury Head through to Sandbanks.

A local bus service provides links to Bournemouth and Poole with a different shopping experience together with a number of restaurants and bars providing a vibrant nightlife. A local train station provides direct links to Southampton, Southampton Airport and London which is approximately 100 miles away.

Bournemouth International airport (6 miles) offers a varied schedule of flights to a number of European destinations.



Winkworth Southbourne

29 Southbourne Grove, Southbourne, Dorset, BH6 3QT
01202 434365 | southbourne@winkworth.co.uk

[winkworth.co.uk/southbourne](https://www.winkworth.co.uk/southbourne)

Winkworth