



## Greencoat Place, SW1P

£2,400 PER MONTH

FURNISHED

### AT A GLANCE

- Two Bedrooms
- Large Reception
- Eat-in Kitchen
- Well Presented
- Furnished
- Council Tax Band: D

**Winkworth**

for every step...



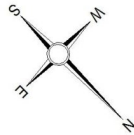
Score	Energy rating	Current	Potential
92+	A		
81-91	B		
69-80	C		
55-68	D		59 D
39-54	E	47 E	
21-38	F		
1-20	G		

## GREENCOAT PLACE, SW1P

£2,400 PER MONTH

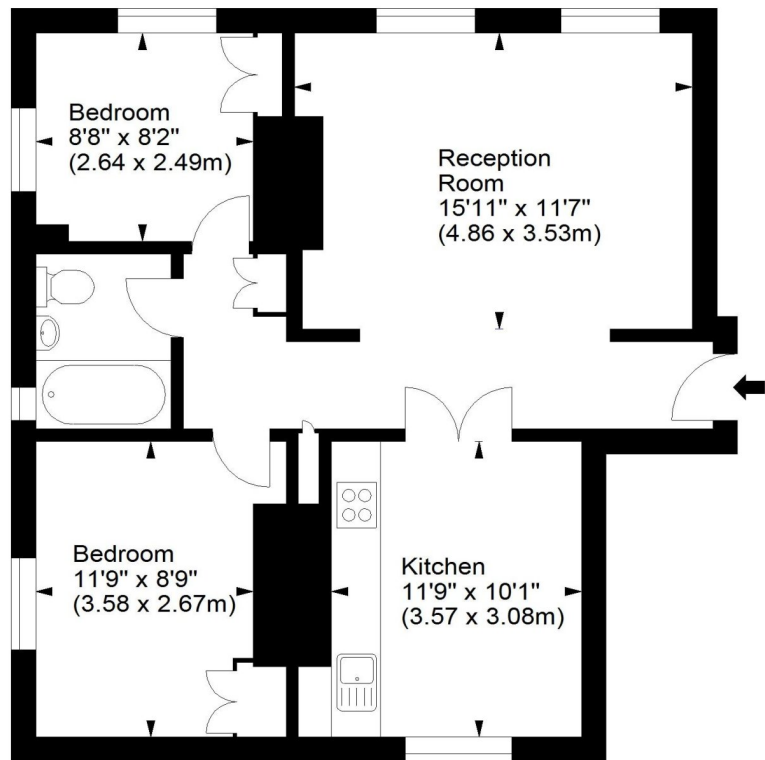
FURNISHED

Accommodation comprises a large reception room, modern fitted kitchen with space to dine, two bedrooms (one double and one single) with storage and family bathroom.



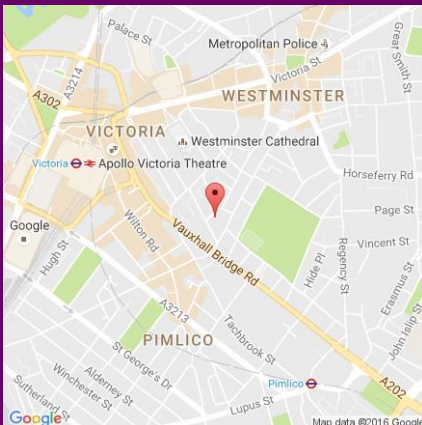
## Buckingham Chambers, SW1

Approx. Gross Internal Area  
677 Sq Ft - 62.89 Sq M



### Third Floor

For illustration purposes only. Not to scale.  
All measurements are taken and shown at floor level.  
www.r3photography.co.uk © Photography / Floor Plans / Lease Plans / EPCs



winkworth wishes to inform prospective buyers and tenants that these particulars are a guide and act as information only. All our details are given in good faith and believed to be correct at the time of printing but they don't form part of an offer or contract. No winkworth employee has authority to make or give any representation or warranty in relation to this property. All fixtures and fittings, whether fitted or not are deemed removable by the vendor unless stated otherwise and room sizes are measured between internal wall surfaces - including fireplaces.

Pimlico & Westminster | 020 7828 1786 |  
pimlico@winkworth.co.uk

winkworth.co.uk/pimlico

**Winkworth**

for every step...