



KILBURN LANE, W10

£2,750 PER MONTH FURNISHED, PART FURNISHED

A BEAUTIFUL VICTORIAN COTTAGE JUST TO THE SOUTH OF KENSAL RISE

Kensal Rise & Queens Park | 0208 960 4947 |
kensalrise@winkworth.co.uk

Winkworth

for every step...

winkworth.co.uk



DESCRIPTION:

Available for a 6 months rental from 01/05/24 - 01/11/24

This lovely home has been meticulously cared for and updated by the owners who have created a modern house whilst being faithful to the character of its Victorian heritage.

The property measures 781 sq. ft. and accommodation is arranged over two floors including a through reception dining room downstairs and a light and airy contemporary kitchen. To the rear there is a beautiful low maintenance landscaped garden.

Upstairs tenants will find a very large family bathroom with separate bath and shower units, a guest double bedroom and a larger primary bedroom to the front of the building. (both offered with ample storage)

The property is in great condition throughout.

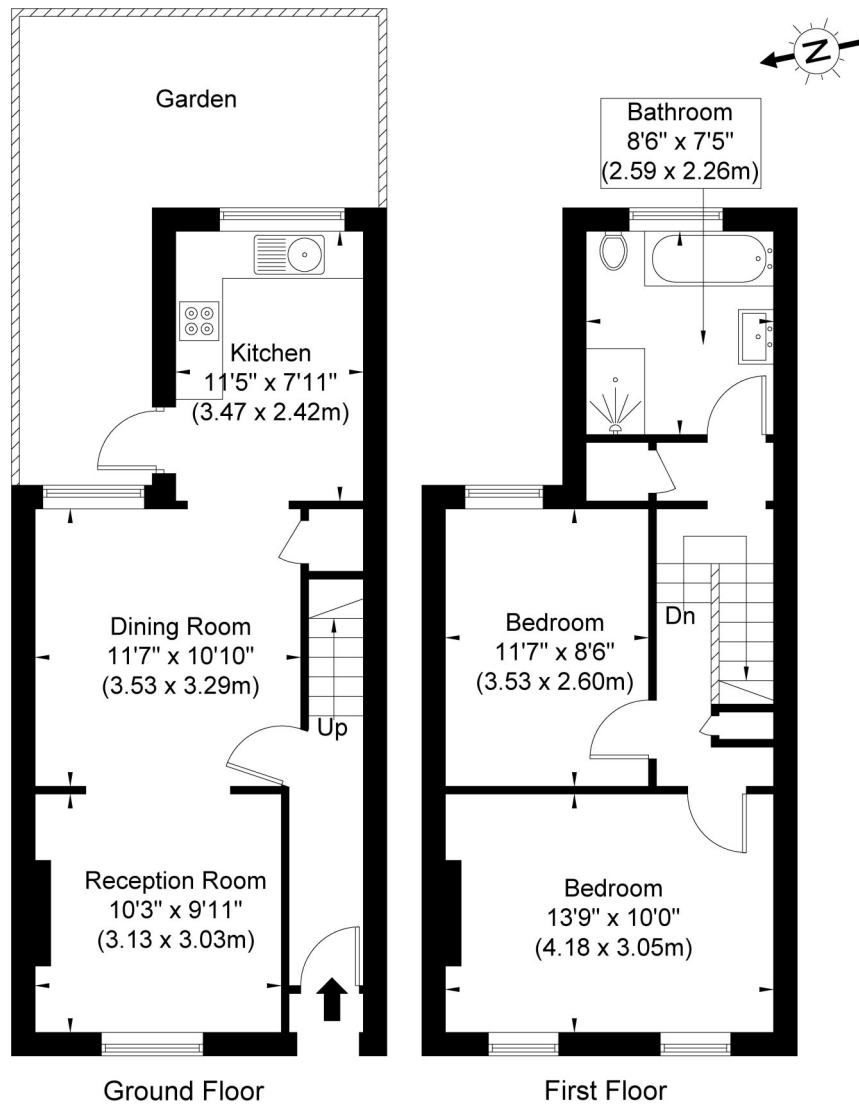
Offered Furnished

Council Tax - £104.45 monthly.



Kilburn Lane W10 4AA

Approx. Gross Internal Area = 781 sq ft / 72.6 sq m



Ref

Copyright THEBLÉUPLAN

Disclaimer : Floor plan measurements are approximate and are for illustrative purposes only. While we do not doubt the floor plan accuracy and completeness, you or your advisors should conduct a careful, independent investigation of the property in respect of monetary valuation.

This floorplan is for illustration purposes only and is not to scale. The position and size of doors, windows, appliances and other features are approximate.

Deposit: £3,173.08

Council Tax Band: E

where no figures are shown, we have been unable to ascertain the information. All figures that are shown were correct at the time of printing.

Kensal Rise & Queens Park | 0208 960 4947 | kensalrise@winkworth.co.uk

Winkworth

for every step...

winkworth.co.uk

winkworth wishes to inform prospective buyers and tenants that these particulars are a guide and act as information only. All our details are given in good faith and believed to be correct at the time of printing but they don't form part of an offer or contract. No Winkworth employee has authority to make or give any representation or warranty in relation to this property. All fixtures and fittings, whether fitted or not are deemed removable by the vendor unless stated otherwise and room sizes are measured between internal wall surfaces, including furnishings.