



Winkworth

for every step...

Old Brewery Court, Burghfield Common, RG7 3FT

£1,500 per month *Unfurnished*



Modern two bedroom first floor apartment located in a popular area of Burghfield Common close to local amenities and schools. The property has been finished to a very high standard comprising spacious open plan living room/kitchen with integrated appliances, two double bedrooms benefitting from built in wardrobes/chest of drawers, stunning three piece bathroom and an en suite shower room to bedroom one. Further benefits include underfloor heating throughout and off road parking. Available 13th April 2026. Unfurnished.

KEY FEATURES

- Modern two bedroom apartment
- First floor
- Two bathrooms
- Private entrance
- Off road residents parking
- Available 13th April
- Unfurnished



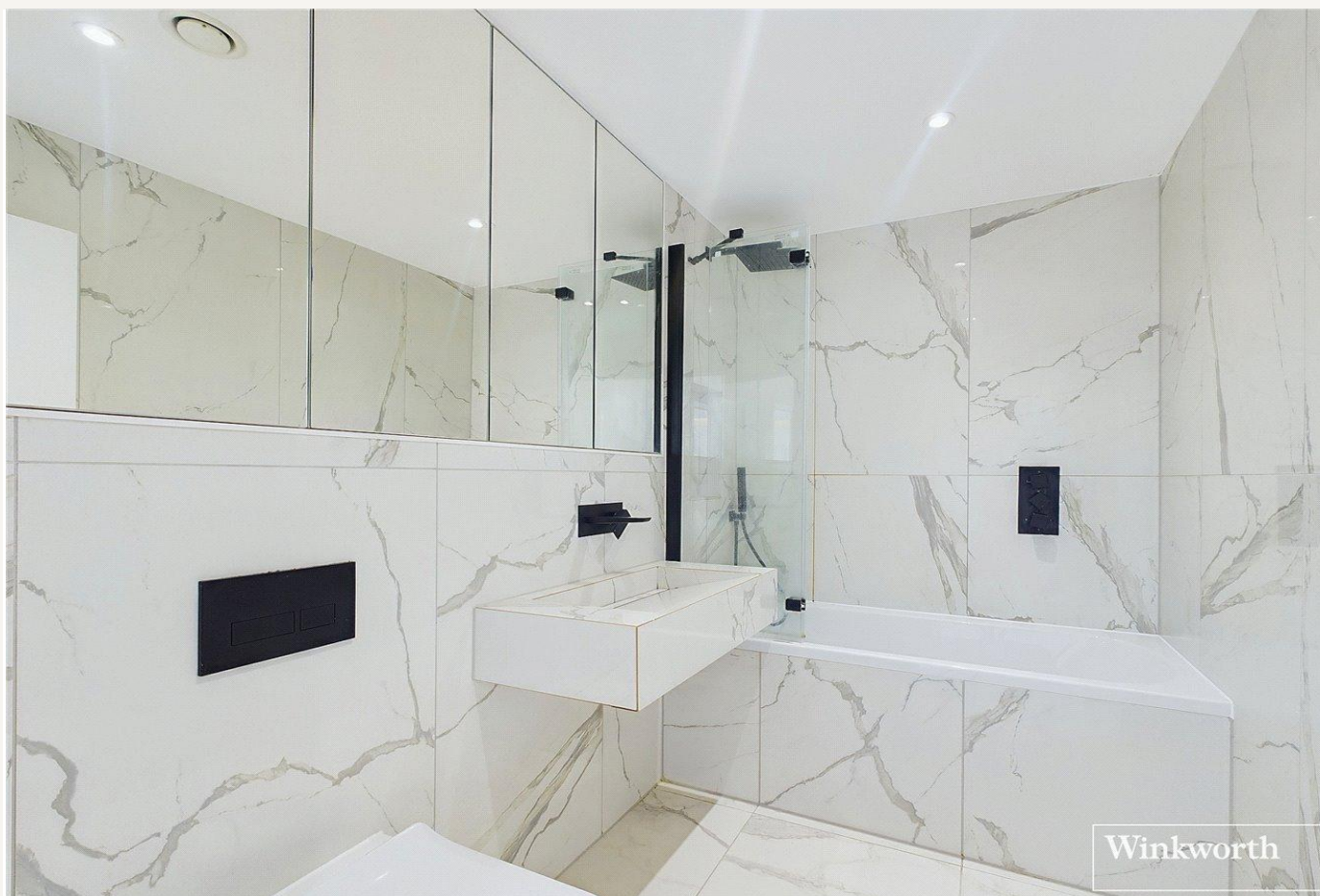
Reading

0118 4022 300 | reading@winkworth.co.uk

Winkworth

for every step...





MATERIAL INFO

Deposit: £1,730.77

Holding Deposit: £346.15

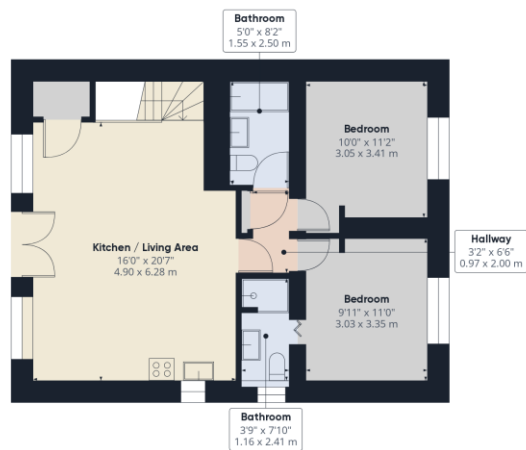
Council Tax Band: B

EPC rating: B



Approximate total area[®]
713.93 ft²
66.33 m²

Ground Floor

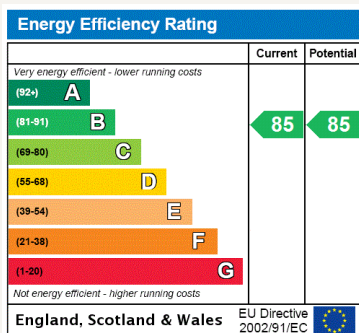


Floor 1

(1) Excluding balconies and terraces

While every attempt has been made to ensure accuracy, all measurements are approximate, not to scale. This floor plan is for illustrative purposes only.

GIRAFFE360



<https://www.winkworth.co.uk/rent/property/REA200117>

Where no figures are shown, we have been unable to ascertain the information. All figures that are shown were correct at the time of printing.

Reading

0118 4022 300 | reading@winkworth.co.uk

Winkworth

for every step...

Winkworth wishes to inform prospective buyers and tenants that these particulars are a guide and act as information only. All our details are given in good faith and believed to be correct at the time of printing but they don't form part of an offer or contract. No Winkworth employee has authority to make or give any representation or warranty in relation to this property. All fixtures and fittings, whether fitted or not are deemed removable by the vendor unless stated otherwise and room sizes are measured between internal wall surfaces, including furnishings.