



SANDRINGHAM CLOSE, HERTFORDSHIRE, WD6  
**£750,000 FREEHOLD**

## AN IMMACULATLY PRESENTED FOUR BEDROOM, THREE BATHROOM FAMILY HOUSE IN SOUTH BOREHAMWOOD

Borehamwood | 020 8953 8899 | borehamwood@winkworth.co.uk





Winkworth

**DESCRIPTION:**

Having recently undergone an extensive schedule of updating and reconfiguration, including a garage conversion to create a large Southerly facing open plan kitchen/Diner/Family room, this four double bedroom, three bathroom family house is presented in immaculate order throughout.

Originally constructed approx. 12 years ago and forming part of a sought after development of only ten houses on the South side of Borehamwood, the property boasts bright and well-proportioned accommodation, arranged over three levels, totalling almost 1700 square feet which is complimented by a Southerly facing rear garden and parking for two cars to the front.

Several Ofsted rated "Good" and "Outstanding" schools including Summerswood, Monksmead and Yavneh are located nearby.

**AT A GLANCE**

- Four Double Bedrooms
- Three Bathrooms
- South Borehamwood
- 1686 Square Feet
- Guest Cloakroom
- South Easterly Rear Garden
- Fitted Wardrobes
- Off Street Parking
- Study/Play Room



Winkworth



Winkworth





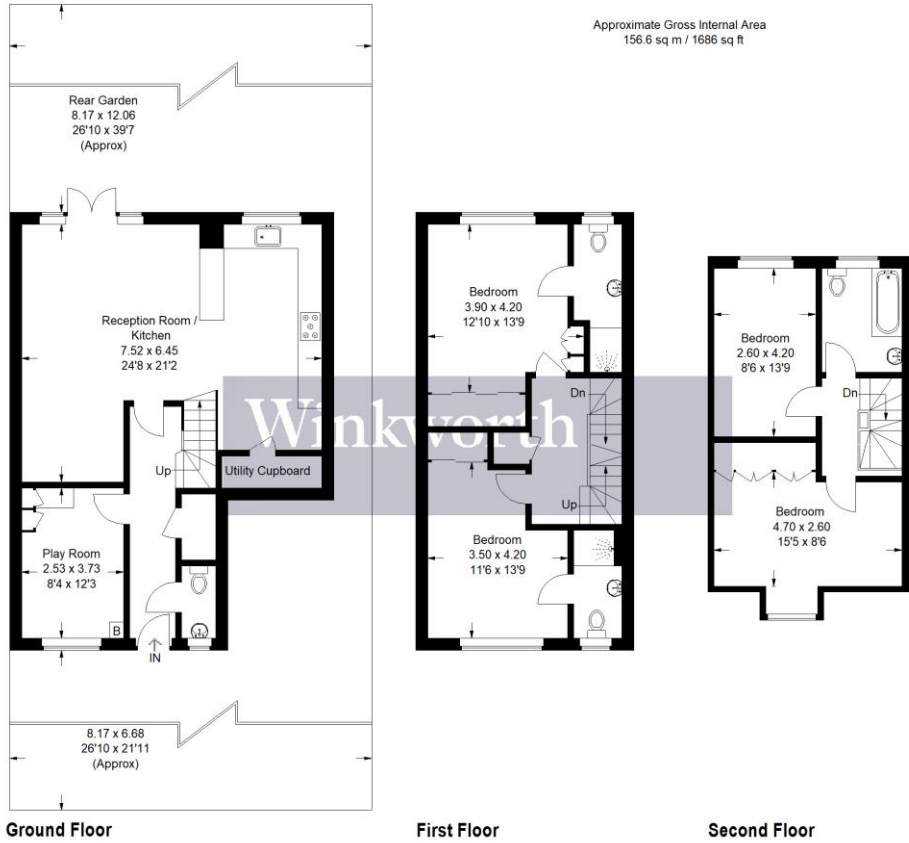
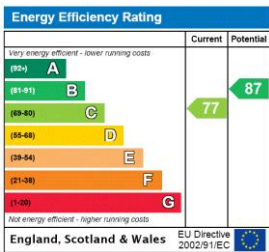


Illustration for identification purposes only, measurements are approximate, not to scale. Winkworth © 2024 (ID1054319)

This floorplan is for illustration purposes only and is not to scale. The position and size of doors, windows, appliances and other features are approximate.



**Tenure:** Freehold  
**Term:** Expires -  
**Service Charge:** £ TBA  
**Ground Rent:** £ 0  
**Council Tax Band:** F

Where no figures are shown, we have been unable to ascertain the information. All figures that are shown were correct at the time of printing.