



BOWMAN MEWS, SW18
£1,750 PER MONTH UNFURNISHED

Winkworth



BOWMAN MEWS, SW18

A bright and beautifully presented one bedroom flat a five minute walk from Southfields Village.

This modern one bedroom flat is situated on the first floor in a private road only 5 minutes' walk from Southfields Station (District Line) and the shops, cafes and restaurants of Southfields Village itself.

The property is light and airy throughout and has an open-plan kitchen/reception room with wood flooring throughout. There is plenty of space for living and dining including a breakfast bar full size fridge-freezer. There is a good size bathroom with bath and shower over as well as a useful airing cupboard. At the rear is a generous double bedroom with spacious wardrobe.

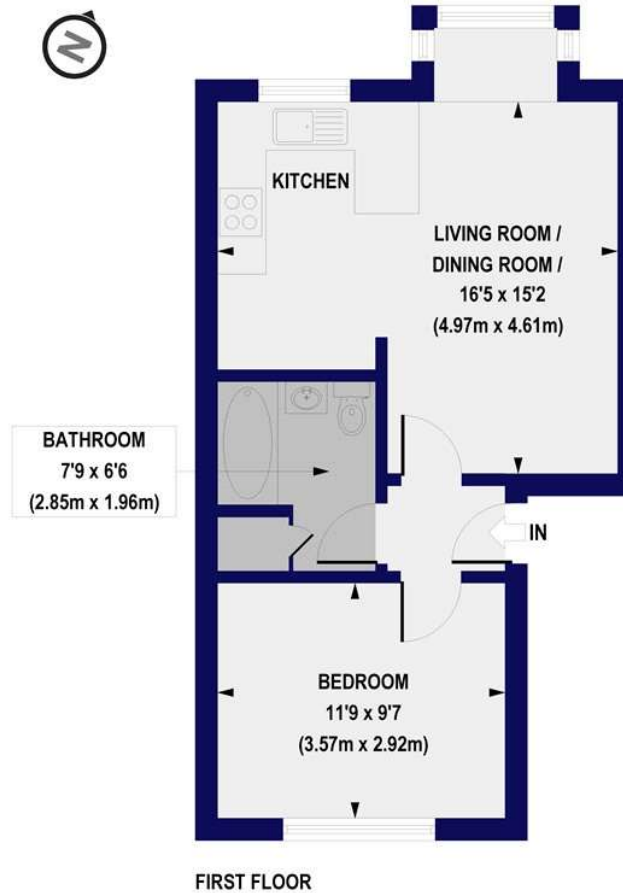
The flat benefits from double glazing as well as off street parking and communal gardens.

Bowman Mews is a quiet cul-de-sac, moments from Southfields Village, with the Underground Station providing commuters with an easy route into the West End and City.





Bowman Mews, SW18
Approx. Gross Internal Floor Area 426 sq. ft / 39.58 sq. m



All measurements of walls, doors, windows, fittings and appliances, including their size and location, are shown as standard sizes and do not constitute any warranty or representation by the seller, their agent or CP Creative. Any intending purchaser must satisfy himself by inspection or otherwise as to the correctness of the information contained in these plans. This plan is for illustrative purposes only and should be used as such by any prospective purchasers.

Winkworth

Energy Efficiency Rating		
	Current	Potential
Very energy efficient - lower running costs		
(92-100) A		
(81-91) B		
(69-80) C	77	78
(55-68) D		
(39-54) E		
(21-38) F		
(1-20) G		
Not energy efficient - higher running costs		
England, Scotland & Wales		EU Directive 2002/91/EC

Southfields | 020 8877 1000 | southfields@winkworth.co.uk

winkworth.co.uk

Winkworth wishes to inform prospective buyers and tenants that these particulars are a guide and act as information only. All our details are given in good faith and believed to be correct at the time of printing but they don't form part of an offer or contract. No Winkworth employee has authority to make or give any representation or warranty in relation to this property. All fixtures and fittings, whether fitted or not are deemed removable by the vendor unless stated otherwise and room sizes are measured between internal wall surfaces, including furnishings.

Winkworth