



Stafford House, London, W2

£900,000 *Share of Freehold*



Winkworth are pleased to offer this bright and well-proportioned two-bedroom apartment, situated on the third floor of a small, attractive purpose-built block with lift access. Ready for immediate occupation, the property is located on one of the most sought-after roads in Little Venice. The apartment comprises two double bedrooms, a modern bathroom suite, a fully fitted kitchen, and a beautiful, light-filled reception room featuring large sash windows that overlook the communal gardens. Additionally, the second bedroom provides direct access to the gardens. Stafford House is peacefully located on a quiet, tree-lined residential road adjacent to the famous Regent's Canal. It is just moments from the boutique shops and cafés of Clifton Road (approximately 0.2 miles) and Warwick Avenue Underground Station (Bakerloo Line, approximately 0.4 miles).



Winkworth Maida Vale

020 7289 1692 | maidavale@winkworth.co.uk

Winkworth

for every step...



KEY FEATURES

- Two Bedrooms
- One Bathroom
- Reception Room
- Kitchen
- Communal Gardens
- Residents Parking
- Leasehold



MATERIAL INFO

Tenure: Share of Freehold

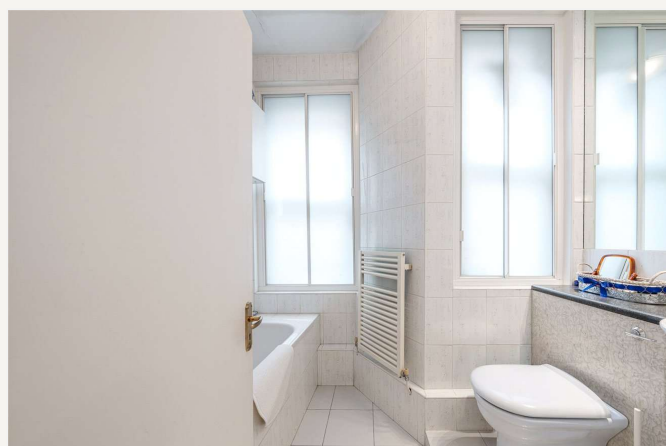
Lease Expiry Date: 25/03/2983

Service Charge: £3,099 per annum

Ground Rent: £0 Annually (subject to increase)

Council Tax Band: E

EPC rating: C





Score	Energy rating	Current	Potential
92+	A		
81-91	B		
69-80	C	77 C	82 B
55-68	D		
39-54	E		
21-38	F		
1-20	G		

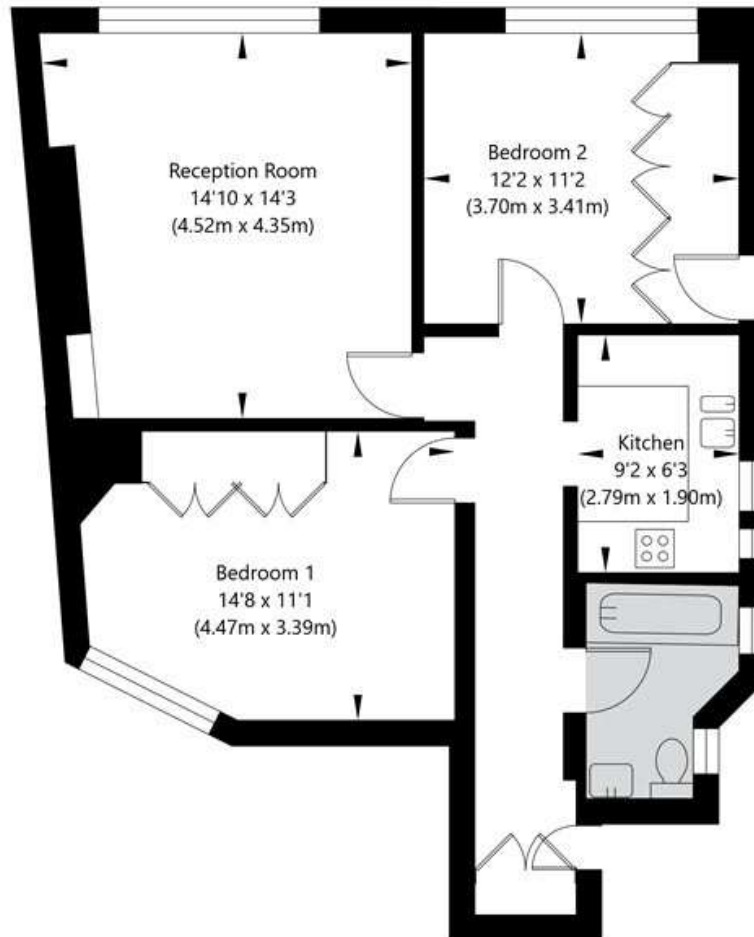
For more information, scan the QR code or visit the link below



<https://www.winkworth.co.uk/sale/property/MDV250114>

Stafford House, Maida Avenue, London W2 1TE

Third Floor
GROSS INTERNAL FLOOR AREA
APPROX. 66.59 SQ M / 717 SQ FT



APPROXIMATE GROSS INTERNAL FLOOR AREA 66.59 SQ M / 717 SQ FT
THIS FLOOR PLAN IS FOR ILLUSTRATIVE PURPOSES ONLY AND
SHOULD BE USED FOR THIS PURPOSE BY PROSPECTIVE APPLICANTS AS ITS NOT TO SCALE.

(c) AMBERSHORE PIX LIMITED / PHOTO - VIDEO - FLOOR PLANS / 0800 999 1577 / WWW.AMBERSHOREPIX.CO.UK

Where no figures are shown, we have been unable to ascertain the information. All figures that are shown were correct at the time of printing.

Winkworth Maida Vale

020 7289 1692 | maidavale@winkworth.co.uk

Winkworth

for every step...

Winkworth wishes to inform prospective buyers and tenants that these particulars are a guide and act as information only. All our details are given in good faith and believed to be correct at the time of printing but they don't form part of an offer or contract. No Winkworth employee has authority to make or give any representation or warranty in relation to this property. All fixtures and fittings, whether fitted or not are deemed removable by the vendor unless stated otherwise and room sizes are measured between internal wall surfaces, including furnishings.