



Oglander Road, Winchester, Hampshire, SO23 7JA

Winkworth

Oglander Road, Winchester, Hampshire, SO23 7JA

Bright End-of-Terrace House in Popular Abbotts Barton

This three-bedroom terraced home occupies a great position in Abbotts Barton, an area which is very popular for many reasons, particularly the proximity and easy access to the railway station and City centre, and the great school catchments including St Bede and Westgate.

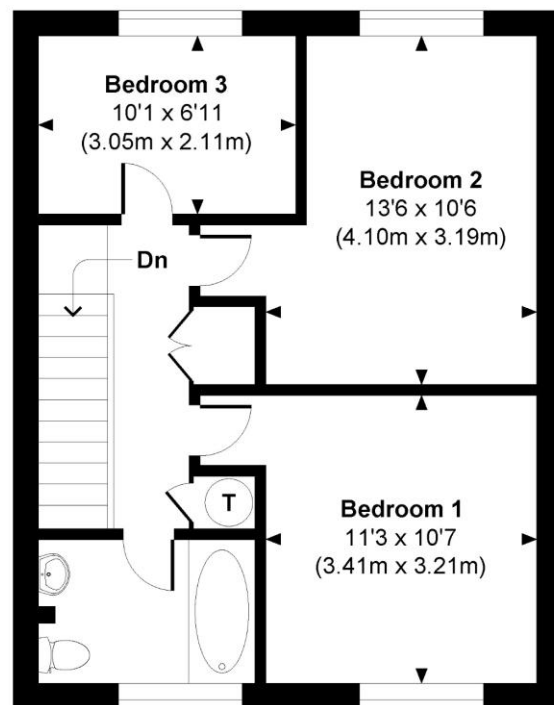
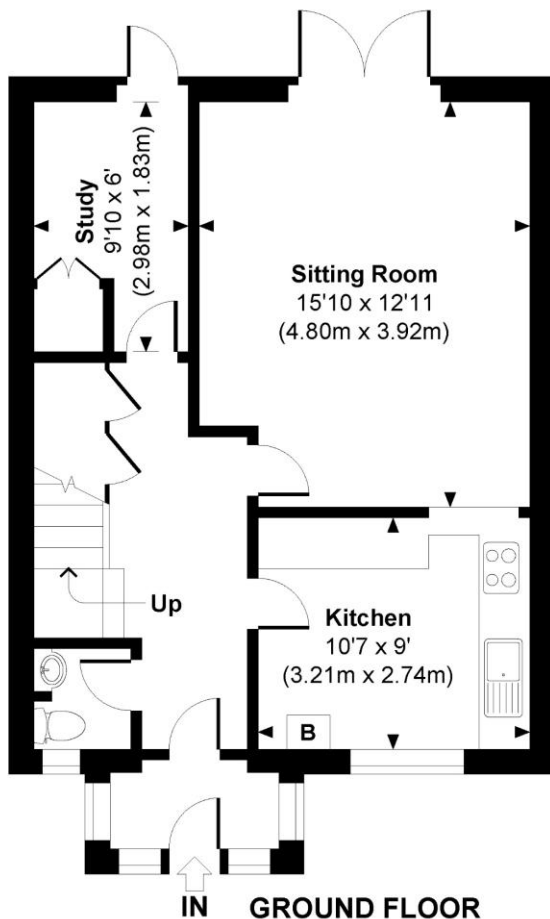
A covered porch leads to a welcoming and spacious entrance hall with a downstairs WC to one side. To the other side lies a fitted kitchen with plenty of storage and an integrated oven, as well as space for appliances such as washing machine and fridge/freezer. Beyond the kitchen is a large sitting room which is an excellent space featuring a handy serving hatch through to the kitchen and a door opening out onto the rear garden. A useful study, accessed from the hallway and with its own door out to the garden, completes the accommodation on the ground floor.

On the first floor there are two good, well-appointed, double bedrooms and a single bedroom. The landing gives access to a storage cupboard and an airing cupboard, and there is a good-sized family bathroom.

Outside the property is set back from the road behind a small patio area in front of the porch. The pretty rear garden is mainly laid to lawn on two levels with steps between top and bottom and includes an area of patio immediately behind the house. There is a garden shed for storage and a gate provides side access out to the road.

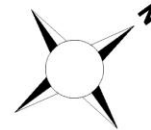






Oglander Road

Approximate Gross Internal Area
Total = 1005 Sq Ft / 93.32 Sq M



**Oglander Road, Winchester, Hampshire,
SO23 7JA**

Directions

From our office in Southgate Street, turn left into the High Street and take the second exit at the roundabout, following the one-way system down to the traffic lights. Proceed straight across and take the second right onto Worthy Lane. After approximately 0.5 miles, turn right into Russell Road and then right into Oglander Road. The property is situated on the right just after the turning for Knights Close.

Location

Oglander Road is located in the northern area of Winchester, ideally located to give easy access to Winchester railway station. It is a short distance to the high street shops, boutiques, library, coffee shops, public houses, restaurants, theatre, cinema, museum and of course the city's historic cathedral. The M3 motorway, A34 and A303 are also easily accessible from this location. The property is situated within the St Bede and Westgate school catchments.

Tenure: Freehold

Services

Mains gas, electricity, water and drainage

Winchester

Council tax band: C

EPC rating: To be confirmed

Viewings

Strictly by appointment with Winkworth Winchester Office

Winkworth.co.uk/winchester

Winkworth Winchester

2 Black Swan Buildings, Southgate Street, Winchester, SO23 9DT
01962 866 777 | winchester@winkworth.co.uk

Winkworth Country House Department

11 Berkeley Street, Mayfair, London, W1J 8DS
020 7871 0589 | countryhouse@winkworth.co.uk

Winkworth

See things differently