



SOUTH ROAD, SE23

£375,000 SHARE OF FREEHOLD

DESCRIPTION:

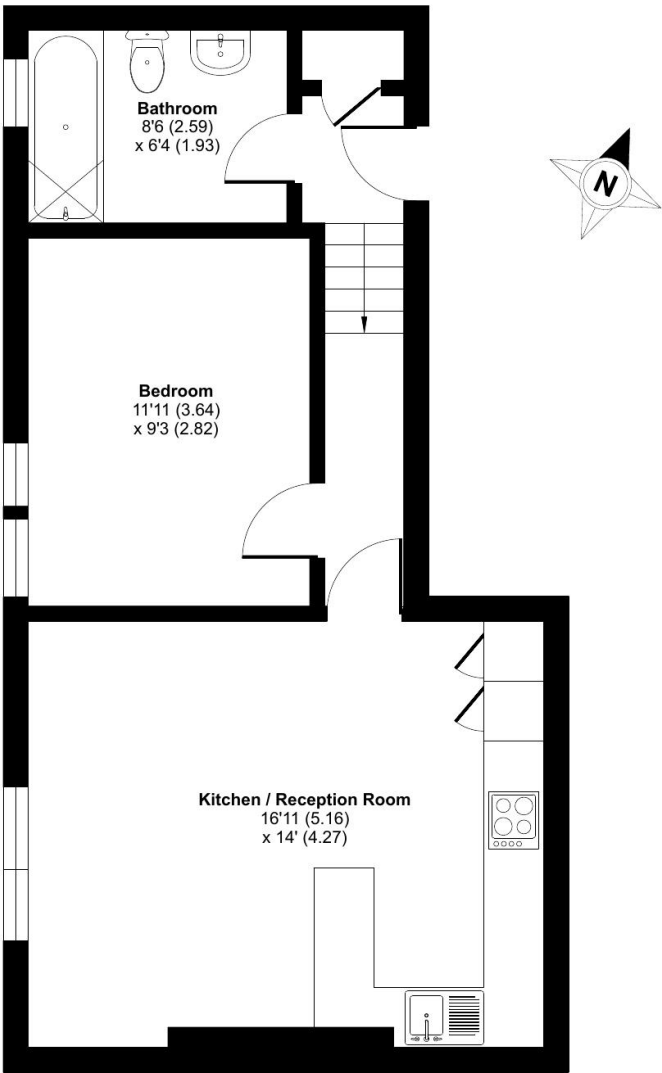
This lovely one-bedroom period apartment boasts high ceilings and access to well-maintained communal gardens, offering a bright and spacious living environment in a highly sought-after location. Conveniently close to local amenities and excellent transport links

Forest Hill | | foresthill@winkworth.co.uk

South Road, London, SE23

Approximate Area = 477 sq ft / 44.3 sq m

For identification only - Not to scale



FIRST FLOOR

Floor plan produced in accordance with RICS Property Measurement Standards incorporating International Property Measurement Standards (IPMS2 Residential). © nñchecon 2025. Produced for Winkworth Forest Hill and New Cross. REF: 1353970

This floorplan is for illustration purposes only and is not to scale. The position and size of doors, windows, appliances and other features are approximate.
For more details visit: <https://www.winkworth.co.uk/sale/property/FHL250136>

Score	Energy rating	Current	Potential
92+	A		
81-91	B		89 B
69-80	C	71 C	
55-68	D		
39-54	E		
21-38	F		
1-20	G		

Tenure: Share of Freehold
information. All figures that are shown were correct at the time of printing.