

SLOANE AVENUE | SW3



Winkworth

# Sloane Avenue SW3

RENT: £1,050pw / £4,550pcm

- 3 Bedrooms
- Second Floor
- Furnished
- Underfloor Heating
- Wood Floors

LOCAL AUTHORITY: Royal Borough of Kensington & Chelsea

COUNCIL TAX BAND: Band G



Knightsbridge & Chelsea | 020 7589 6616  
knightsbridge@winkworth.co.uk



for every step...

Energy Efficiency Rating		
	Current	Potential
Very energy efficient - lower running costs		
(92+) <b>A</b>		
(81-91) <b>B</b>		
(69-80) <b>C</b>		
(55-68) <b>D</b>	59	59
(39-54) <b>E</b>		
(21-38) <b>F</b>		
(1-20) <b>G</b>		
Not energy efficient - higher running costs		
England, Scotland & Wales	EU Directive 2002/91/EC	

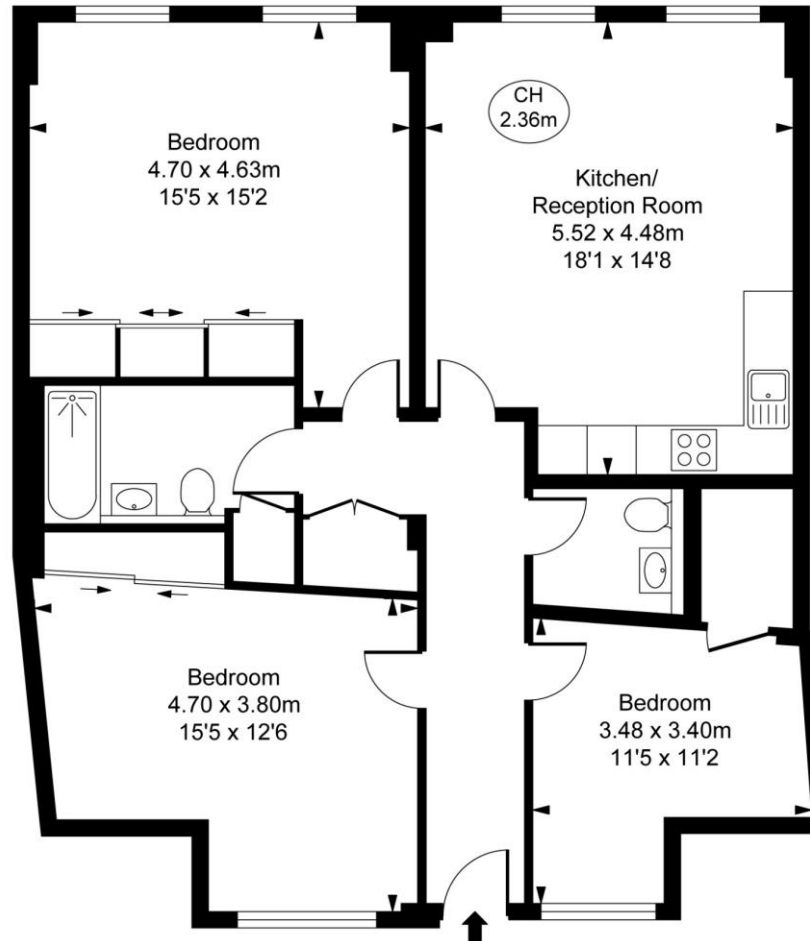
winkworth.co.uk

Winkworth wishes to inform prospective buyers and tenants that these particulars are a guide and act as information only. All our details are given in good faith and believed to be correct at the time of printing but they don't form part of an offer or contract. No Winkworth employee has authority to make or give any representation or warranty in relation to this property. All fixtures and fittings, whether fitted or not are deemed removable by the vendor unless stated otherwise and room sizes are measured between internal wall surfaces, including furnishings.

Sloane Avenue, SW3  
Approximate Gross Internal Area  
96.13 sq m / 1,035 sq ft



( CH = Ceiling Heights )



Second Floor