



Flat 4, Michelgrove House

Boscombe Spa BH5 1JJ

ASKING PRICE £275,000

LEASEHOLD

Winkworth





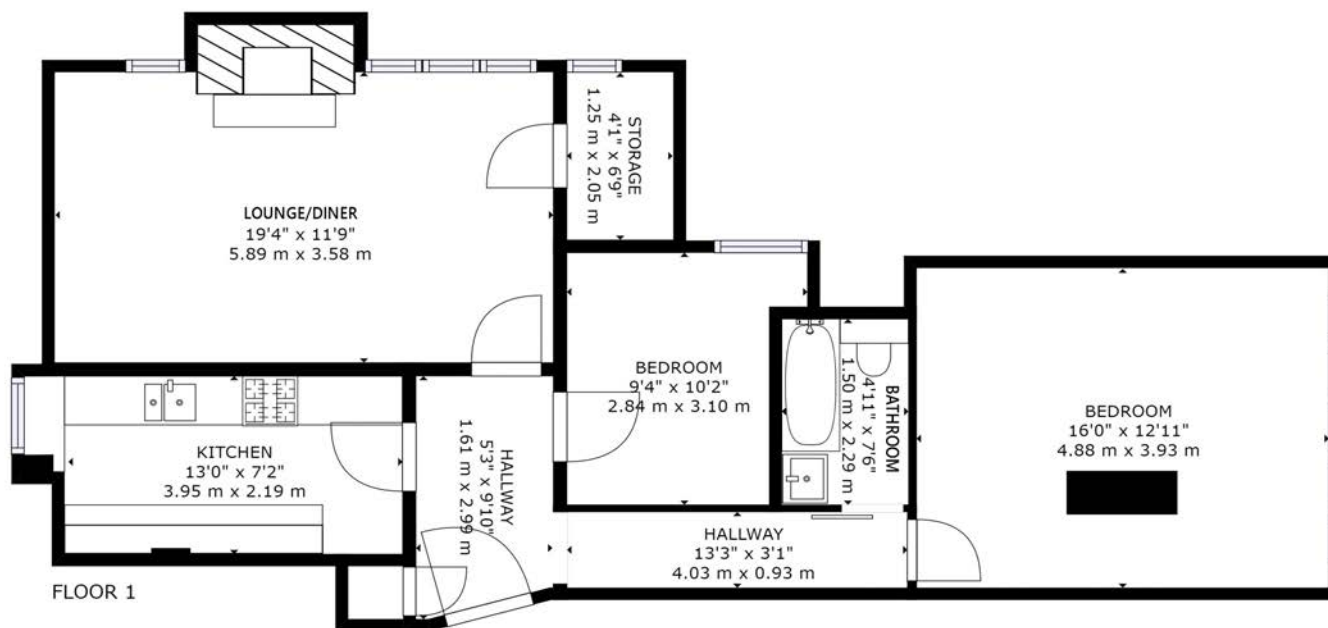
ASKING PRICE - £275,000

Built in 1899, Michelgrove House has been converted into a range of self contained apartments. Flat four has recently been professionally renovated to a high standard. The spacious lounge / diner benefits from high ceilings, two large windows and a feature fireplace and has a large storage cupboard to one end. Bedroom one is a spacious double room and has a large window to the south aspect and ample space for a range of furniture. Bedroom two is a second double room with new carpet. The bathroom has been fitted with a brand new suite including a bathtub with an over head shower, w/c, washbasin and heated towel rail with a white tile to make the room feel fresh and bright. The spacious kitchen has ample storage with a range of light wood units an integrated oven with a gas hob and overhead extractor fan and double sink. The apartment benefits from a residents parking space and beautiful communal grounds.

Two Double Bedrooms | Spacious Lounge | Large Kitchen | Modern Bathroom | Residents Parking | Close To The Beach | Communal Grounds

Leasehold 994 Years Remaining | EPC - D | Council Tax - E | Service Charge - £840 PA | Ground Rent - Peppercorn

01202 434365 |
southbourne@winkworth.co.uk



GROSS INTERNAL AREA
FLOOR 1: 902 sq. ft, 84 m²
TOTAL: 902 sq. ft, 84 m²
SIZES AND DIMENSIONS ARE APPROXIMATE, ACTUAL MAY VARY.



Boscombe is the suburb of Bournemouth and is located to the south east and neighbours both Bournemouth and Southbourne. Boscombe High Street offers a varied shopping experience with a number of well known high street stores. The area benefits from a number of local attractions including the award-winning blue flag sandy beaches with a level walk promenade extending from Hengistbury Head through to Sandbanks.

A local bus service provides links to Bournemouth and Poole with a different shopping experience together with a number of restaurants and bars providing a vibrant nightlife. A local train station provides direct links to Southampton, Southampton Airport and London which is approximately 100 miles away.

Bournemouth International airport (6 miles) offers a varied schedule of flights to a number of European destinations.

Winkworth Southbourne

29 Southbourne Grove, Bournemouth, Dorset, BH6 3QT

01202 434365 | southbourne@winkworth.co.uk

winkworth.co.uk/southbourne

Winkworth