



NOVELLO WAY, HERTFORDSHIRE, WD6

**£425,000 FREEHOLD**

## TWO DOUBLE BEDROOM TERRACED HOUSE SITUATED IN A QUIET AND SOUGHT AFTER CUL DE SAC

**Borehamwood** | 020 8953 8899 | [borehamwood@winkworth.co.uk](mailto:borehamwood@winkworth.co.uk)





## DESCRIPTION:

Sold with the benefits of two parking spaces and a guest cloakroom this two double bedroom terrace house would be an ideal purchase for a first time buyer, downsizer or buy to let investor.

Novello way forms part of the ever popular Studio Way development which has become increasingly in demand due to its proximity to central Borehamwood with its wide range of shops, high performing schools and transport links and Sky Studios which are due for completion shortly

## AT A GLANCE

- 2 Bedrooms
- Two Allocated Parking Spaces
- 665 Square Feet
- Guest Cloakroom
- Quiet Sought After Cul de Sac
- Gas Central Heating
- Double Glazed







Approximate Gross Internal Area = 61.8 sq m / 665 sq ft

Store = 0.8 sq m / 9 sq ft

Total = 62.6 sq m / 674 sq ft

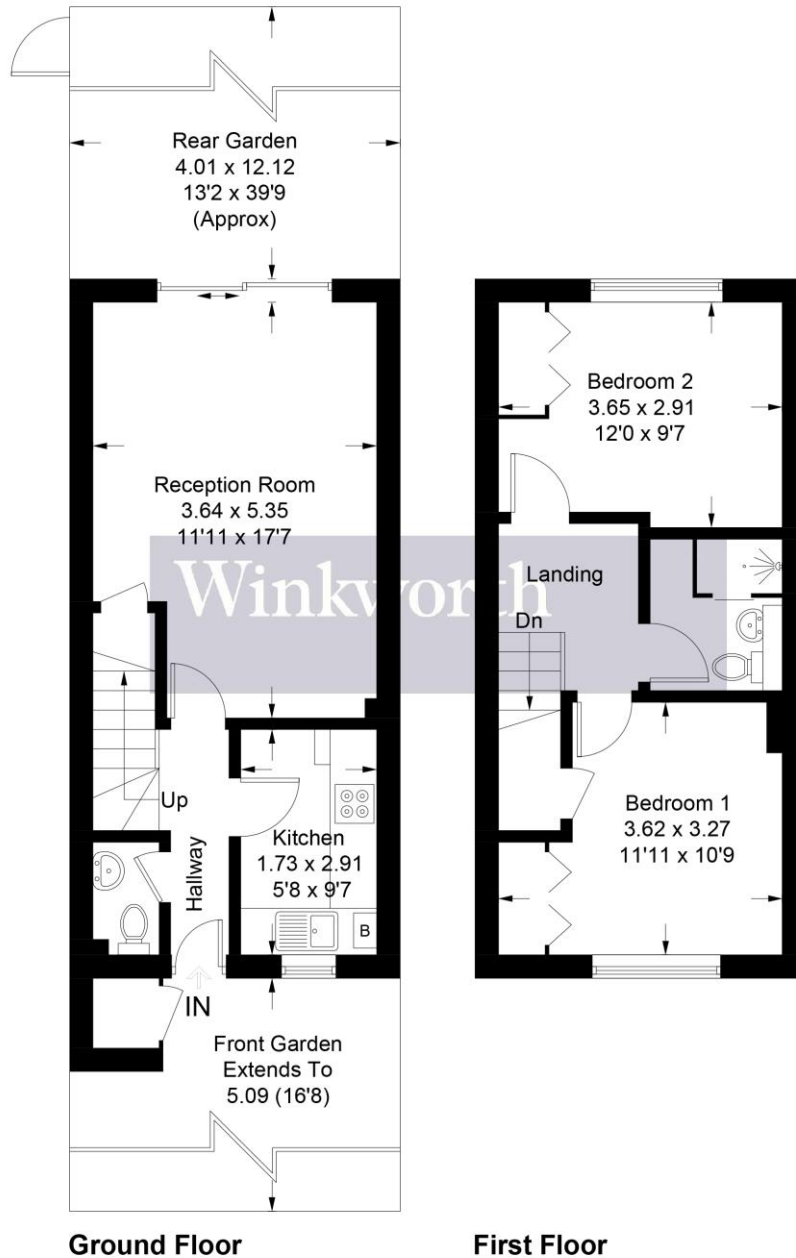


Illustration for identification purposes only, measurements are approximate, not to scale. Winkworth © 2022 (ID921312)

This floorplan is for illustration purposes only and is not to scale. The position and size of doors, windows, appliances and other features are approximate.

