



CENTRE HEIGHTS, LONDON, NW3 £795 PER WEEK FURNISHED, UNFURNISHED

A bright and modern two-bedroom 6th and 7th floor duplex apartment located in the popular Centre Heights building in Swiss Cottage. The flat features a spacious open-plan living and kitchen area, two good-sized double bedrooms, and a modern bathroom.

Master Double Bedroom with En-Suite Shower | Second Double Bedroom | Modern Bathroom | Guest Cloakroom | Balcony | Porter

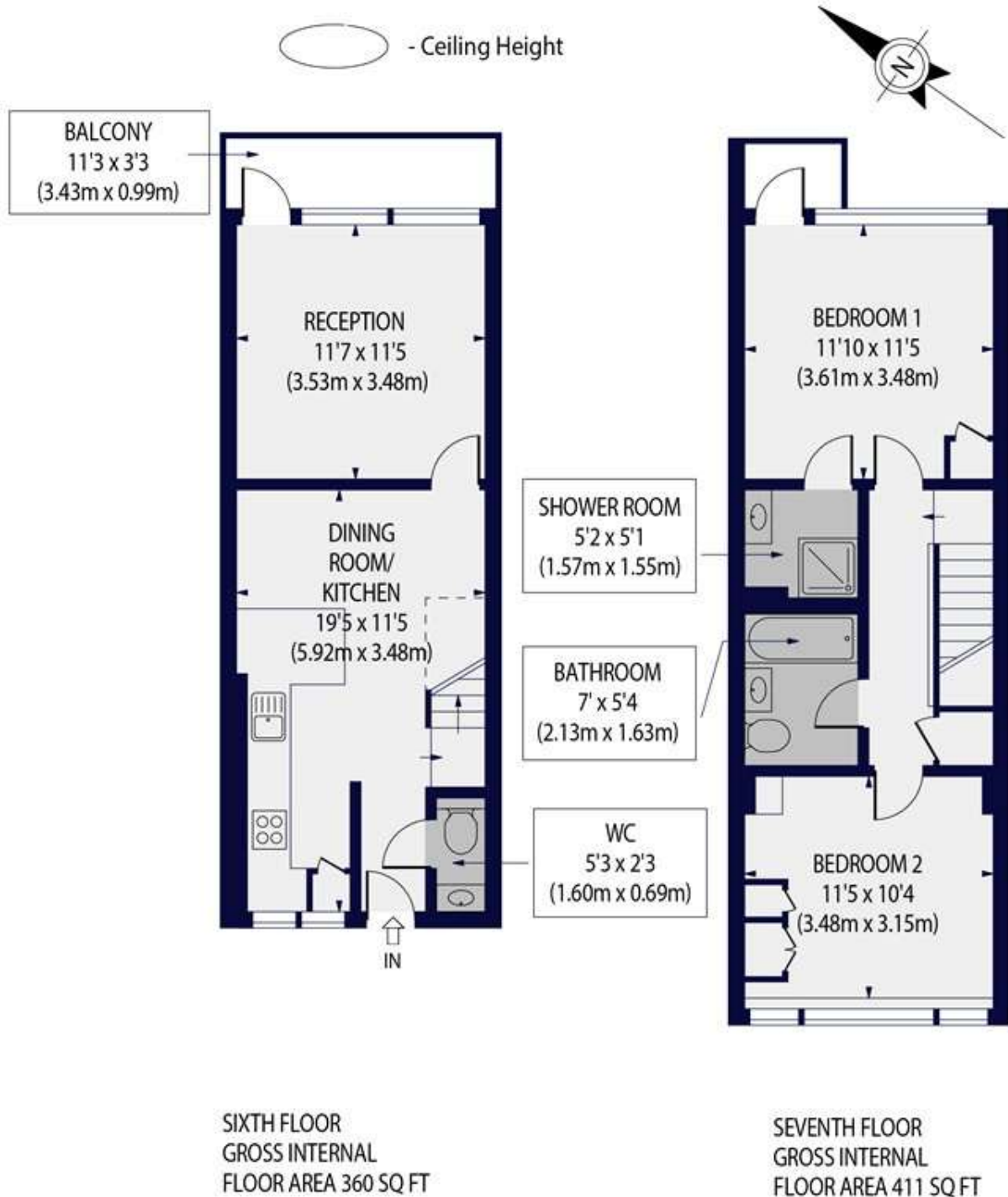
Winkworth

for every step...



CENTRE HEIGHTS, FINCHLEY ROAD, NW3 6JG

Approx. Gross Internal Floor Area 771 sq ft. / 72 sq.m



For Illustration Purposes Only - Not To Scale Floor Plan by www.nogaphotostudio.com Ref: No.53263
This floor plan should be used as a general outline for guidance only. Any intending purchaser or lessee should satisfy themselves by inspection, searches, enquiries and full survey as to the correctness of each statement. Any areas, measurements or distances quoted are approximate and should not be used to value a property or be the basis of any sale or let.

Winkworth

Score	Energy rating	Current	Potential
92+	A		
81-91	B		
69-80	C	80 C	80 C
55-68	D		
39-54	E		
21-38	F		
1-20	G		

Tenancy Deposit: £3,975.00

Holding Deposit: 1 weeks rent where the rent is up to £100,000 per annum, 2 weeks rent where the rent is over £100,000 per annum

Council Tax Band: E

Where no figures are shown, we have been unable to ascertain the information. All figures that are shown were correct at the time of printing.

Where no figures are shown, we have been unable to ascertain the information. All figures that are shown were correct at the time of printing.

These particulars are not an offer or contract, nor part of one. You should not rely on statements by Winkworth in the particulars or by word of mouth or in writing "information" as being factually accurate about the property, its condition or its value. Winkworth does not have any authority to make any representations about the property, and accordingly any information given is entirely without responsibility on the part of the agents, seller(s) or lessor(s). These particulars are prepared on the basis of the information supplied by our client and are a rough guide for information only. The photographs show only certain parts of the property. We are not able to check all of the information and therefore are unable to guarantee accuracy. All interested parties are therefore advised to undertake all necessary inspections and checks that they deem appropriate. Where displayed, the square footage is taken from the floor plans, which are created by an independent supplier. These measurements are approximate and included for illustrative purposes only. The measurements may vary. Winkworth does not make any representation as to the accuracy of these measurements and you should seek to verify them for yourself. Winkworth accept no liability for any loss you may suffer if you rely on these measurements. All fixtures and fittings, whether fitted or not are deemed removable by the vendor unless stated. Any reference to alterations to, or use of, any part of the property does not mean that any necessary planning, building regulations or other consent has been obtained. Amenities and appliances have not been tested

Belsize Park | 161 Haverstock Hill, London, NW3 4QT | 020 7483 7604 |
belsizepark@winwkorth.co.uk

Winkworth

for every step...