



SEELY ROAD, SW17
£455,000 LEASEHOLD

A STUNNING TWO BEDROOM APARTMENT.

Tooting | 020 8767 5221 | tooting@winkworth.co.uk

Winkworth

for every step...

winkworth.co.uk

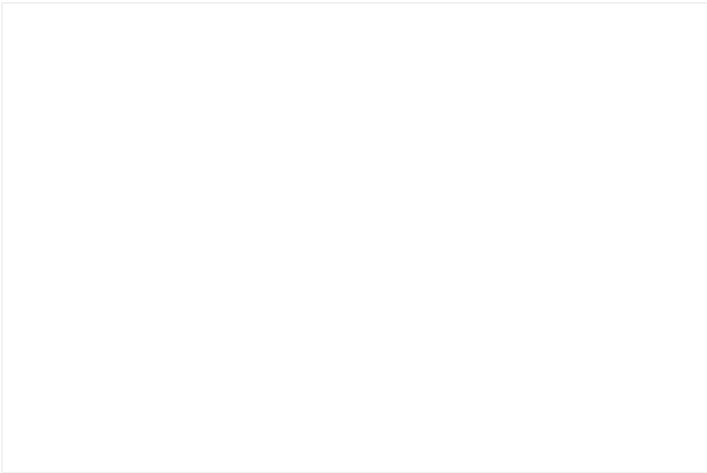
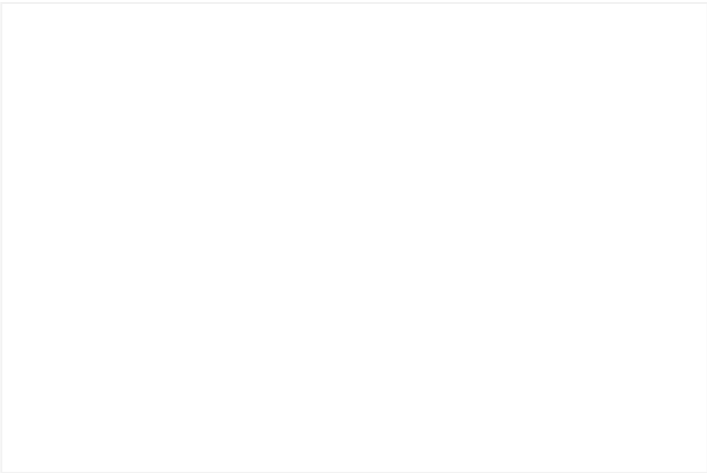
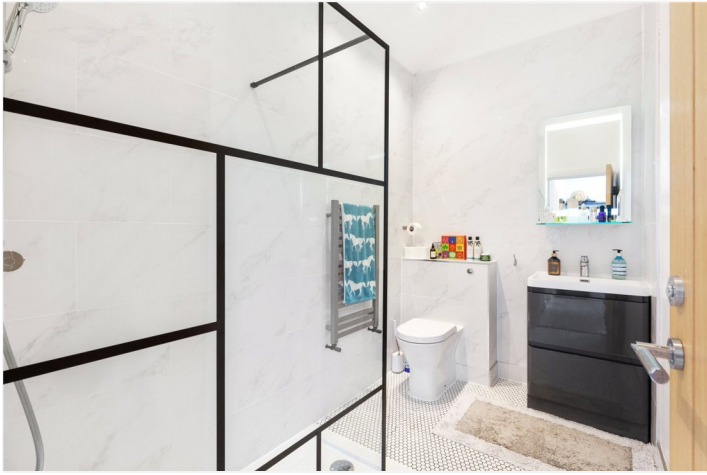


DESCRIPTION:

An exceptional and extensively renovated two bedroom apartment situated in a quiet gated development. This property boasts a private entrance, two double bedrooms, fitted kitchen, stylish bathroom suite and ample storage.

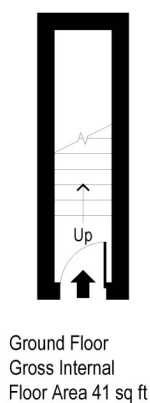
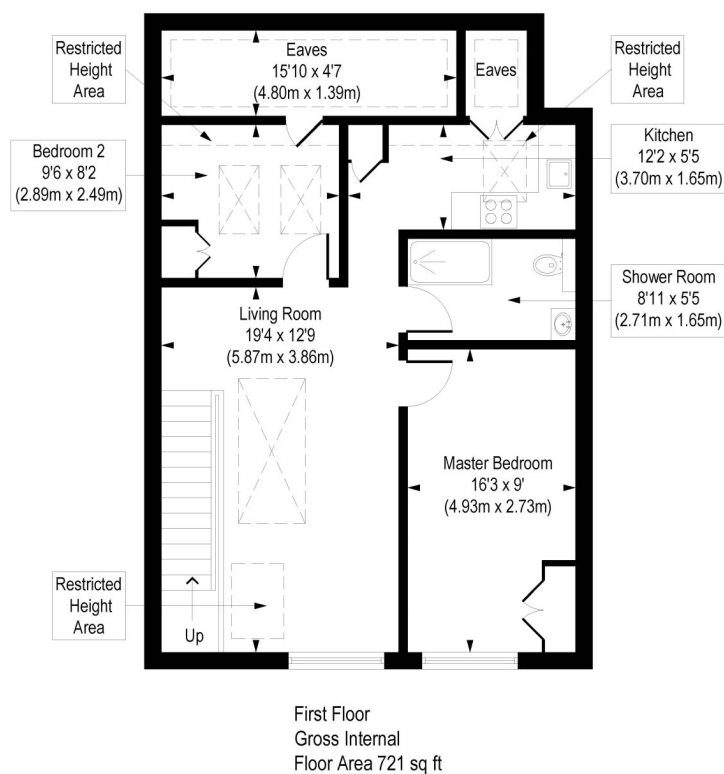
The property benefits from solar panels which equated in the gas and electric bill for 2022 being full covered by the revenue from the solar panels.

Seely Road is in the much sought-after catchment of Graveney school. A short walk away from Tooting National Rail station (City Thameslink) and Tooting Broadway (Northern line, Zone 3). It is also perfectly situated for access to Tooting's many bars, restaurants and amenities, as well as St George's hospital and university.



Hayloft, Seely Road, SW17

Approx. Gross Internal Floor Area 762 sq. ft / 70.81 sq. m (Including Restricted Height Area & Eaves)
Approx. Gross Internal Floor Area 625 sq. ft / 58.03 sq. m (Excluding Restricted Height Area & Eaves)



COMPLIANT WITH RICS CODE OF MEASURING PRACTICE. Floorplan is for illustrative purposes only and is not to scale. Every attempt has been made to ensure the accuracy of the floorplan shown, however all measurements, fixtures, fittings and data shown are an approximate interpretation for illustrative purposes only. Liability for errors, omissions or mis-statement through negligence or otherwise is hereby excluded.

This floorplan is for illustration purposes only and is not to scale. The position and size of doors, windows, appliances and other features are approximate.

Tooting | 020 8767 5221 | tooting@winkworth.co.uk

Winkworth

for every step...

winkworth.co.uk

Winkworth wishes to inform prospective buyers and tenants that these particulars are a guide and act as information only. All our details are given in good faith and believed to be correct at the time of printing but they don't form part of an offer or contract. No Winkworth employee has authority to make or give any representation or warranty in relation to this property. All fixtures and fittings, whether fitted or not are deemed removable by the vendor unless stated otherwise and room sizes are measured between internal wall surfaces, including furnishings.