



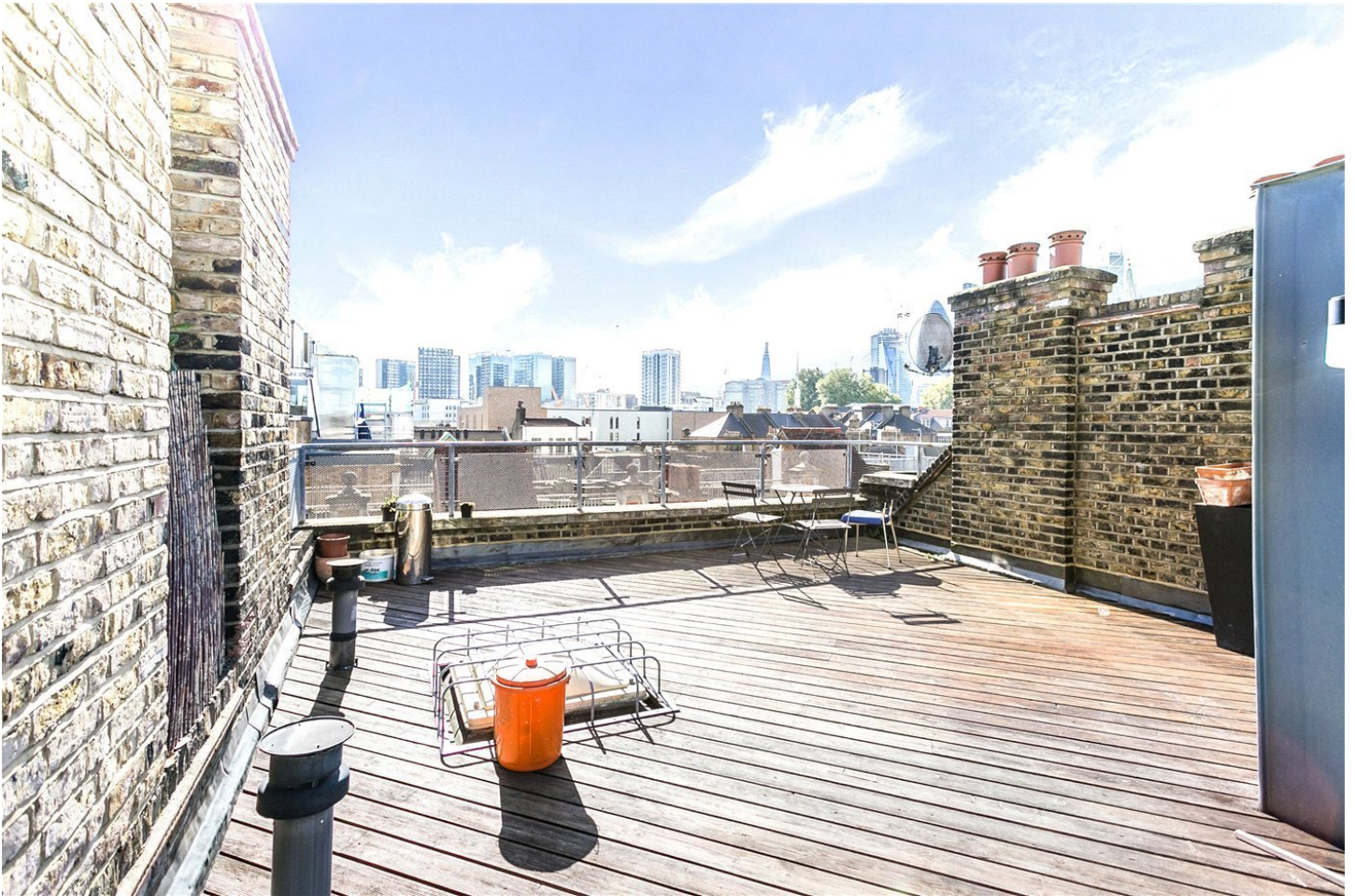
FLAT 3, HANBURY STREET, LONDON, E1  
**£585,000 SHARE OF FREEHOLD**

## TWO DOUBLE BEDROOM APARTMENT WITH PRIVATE BALCONY IN THE HEART OF SHOREDITCH

Shoreditch | 020 7749 7650 | [shoreditch@winkworth.co.uk](mailto:shoreditch@winkworth.co.uk)

**Winkworth**





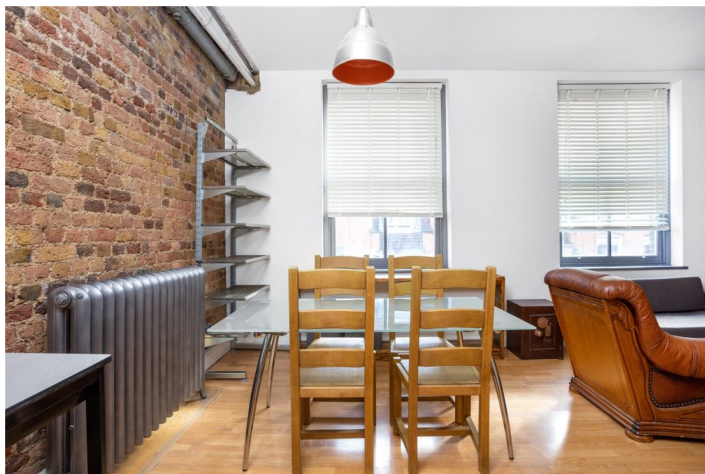
## DESCRIPTION:

A wonderful two double bedroom, second floor apartment just off Brick Lane with private balcony. The property boasts a spacious open plan living/dining room with semi open plan kitchen and lots of natural light throughout. On entering the property, you are greeted with an entrance hallway leading to two double bedrooms with private balcony off the master bedroom. The property also benefits with use of a large communal terrace that has stunning views of the City.

Hanbury Street is located just off Brick Lane and is ideally placed with an array of boutique shops, cafes, pop-ups, bars and restaurants on your doorstep. Bethnal Green Road, Commercial Street, Spitalfields Market and Columbia Road are all within easy walking distance putting you right in the centre of everything Shoreditch has to offer. Shoreditch High Street station is close by and Liverpool Street, Old Street and Aldgate East are only a short stroll away offering fantastic access to the City.

**Winkworth**

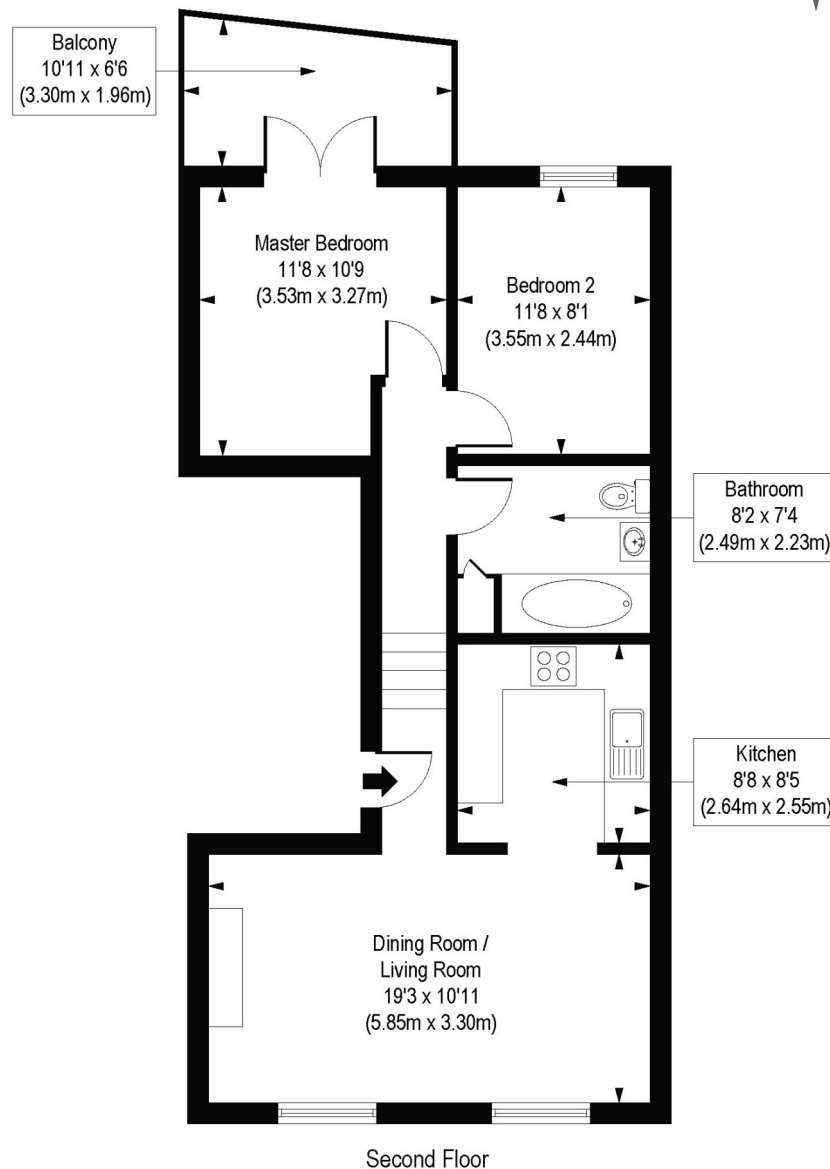
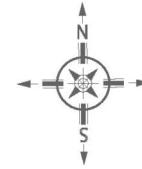




Winkworth

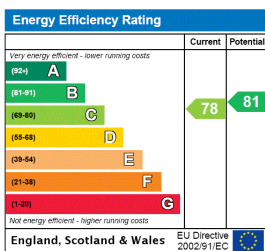
# Hanbury Street, E1

Approx. Gross Internal Floor Area 640 sq. ft / 59.43 sq. m



COMPLIANT WITH RICS CODE OF MEASURING PRACTICE. Floorplan is for illustrative purposes only and is not to scale. Every attempt has been made to ensure the accuracy of the floorplan shown, however all measurements, fixtures, fittings and data shown are an approximate interpretation for illustrative purposes only. Liability for errors, omissions or mis-statement through negligence or otherwise is hereby excluded.

This floorplan is for illustration purposes only and is not to scale. The position and size of doors, windows, appliances and other features are approximate.



Shoreditch | 020 7749 7650 | shoreditch@winkworth.co.uk

**Winkworth**

[winkworth.co.uk](http://winkworth.co.uk)

See things differently

Winkworth wishes to inform prospective buyers and tenants that these particulars are a guide and act as information only. All our details are given in good faith and believed to be correct at the time of printing but they don't form part of an offer or contract. No Winkworth employee has authority to make or give any representation or warranty in relation to this property. All fixtures and fittings, whether fitted or not are deemed removable by the vendor unless stated otherwise and room sizes are measured between internal wall surfaces, including furnishings.