



7 Marshalls Court RG14 1RY

A fantastic two bedroom ground floor maisonette nestled in a leafy lane in the heart of Speen.

You enter the property via the private front door. There is a large entry hall leading to the spacious living room, which is flooded with light from french door leading to the well maintained communal garden, offering a great space to enjoy the sunshine.

The property comes equipped with a fully fitted kitchen that comprises of fridge/freezer, dishwasher, washing machine, electric oven and hob. The kitchen also benefits from a storage room to the side.

There are two bedrooms, one single and one good sized double, both with built in storage. The property also has a bathroom with shower over the bath.

Other benefits of this maisonette include double glazing, monitored care alarms, communal laundry, communal lounge, coffee mornings and other events.

There is private communal parking.

Ultrafast broadband available. Some mobile signal may be limited so please check with provider.



Winkworth

AT A GLANCE

NO ONWARD CHAIN

Over 55's

648sqft x 60sqmt

Living room

Kitchen

Communal Gardens

Two Bedrooms

Bathroom

Parking

UTILITIES

Mains water

Mains electric

Mains drainage

LEASEHOLD DETAILS

Block Managers: Broadleaf Management Services

Approx 900+ years lease remaining

Service Charge £282 per month

DIRECTIONS

What3words:///sound.ashes.sling

Approximate Gross Internal Area
60.27 sq m / 648.74 sq ft

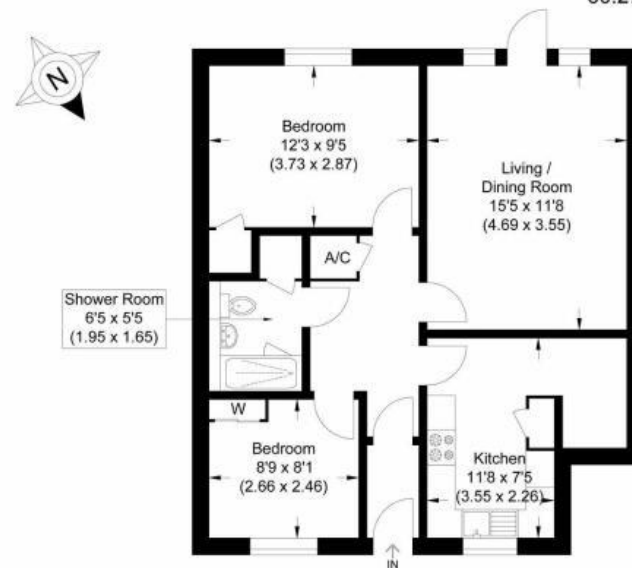


Illustration for identification purposes only, measurements are approximate, not to scale.



Newbury Office

43 Northbrook Street, Newbury, Berkshire RG14 1DT

01635 552552 | newbury@winkworth.co.uk

winkworth.co.uk/newbury

Winkworth

See things differently.