

DEER PARK ROAD, STOKE FLEMING
£369,000 FREEHOLD

A THREE BEDROOMED BUNGALOW IN THE POPULAR VILLAGE OF STOKE FLEMING

Dartmouth | 01803 832288 | dartmouth@winkworth.co.uk 3a Market
Street, Dartmouth, TQ6 9QE

Winkworth

for every step...

winkworth.co.uk



SUMMARY: A well maintained three bedroomed bungalow with parking and gardens to enjoy the summer months in.

DIRECTIONS: From Dartmouth travel up College Way on the A379 to Townstal Road. Follow the A379 on to Yorke Road, sign posted to Stoke Fleming. Continue to Stoke Fleming, past the village hall on your right, then drive down Ravensbourne Lane on your right. Continue down, then turn right onto Venn Lane, carry on past Harefield Drive, past Bay View Close, past Venn Way then turn right onto Deer Park Road and No.28 will be the 3rd on your right.

DESCRIPTION: Cute and Cosy! A log burner for the winter, and French Doors to the garden for summer. Maintained to a high standard by the present owner, this bungalow is ready to move in and enjoy. A fenced garden, sunny and private, it would be ideal for outdoor entertaining, toddlers, or pets. There is a lovely indoor/outdoor flow that makes the most of balmy summer months.

Outside – The garden is established with a mix of shrubs and an herbaceous border. This is relatively low maintenance and could be developed in any direction the new owners wish.

COUNCIL TAX BAND: D

POSTCODE: TQ6 0QW

EPC RATING: F

SERVICES - Mains electricity and water connected. There is no gas in the village.

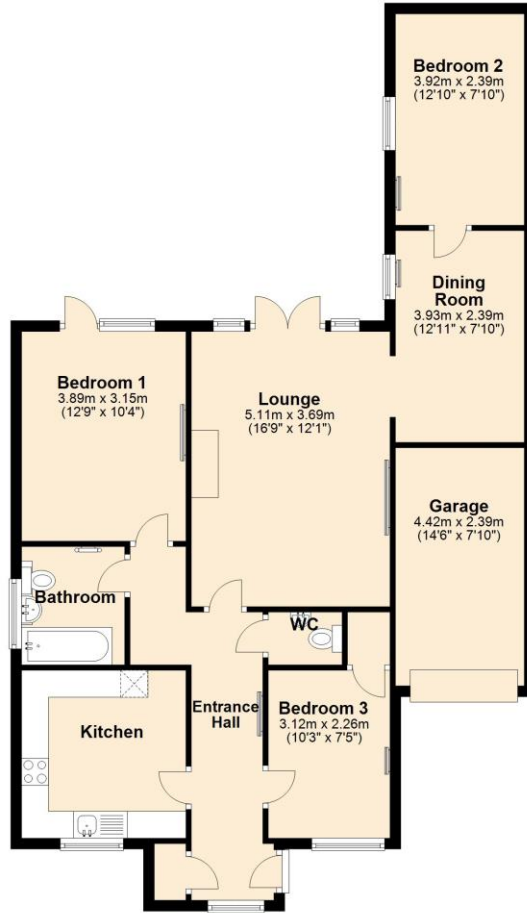
OWNERS COMMENTS: - I moved into this bungalow, liked it and as time went on finally fell in love with it. The garden was always so near and beautifully assessable through the patio doors leading on to the decking on to the lawn (which felt like a soft carpet to walk on). I have added to the garden, with love and affection. It has been my haven. The peace, tranquillity, and flora in my garden has given me so much pleasure and happiness over the time I have been here.

I will miss this place and my own botanical creation, but it's here for the next occupier to embrace and enjoy.



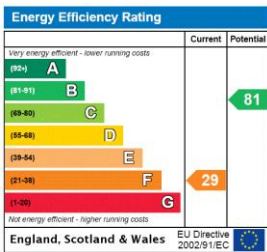
Ground Floor

Approx. 97.4 sq. metres (1048.5 sq. feet)



Total area: approx. 97.4 sq. metres (1048.5 sq. feet)

This floorplan is for illustration purposes only and is not to scale. The position and size of doors, windows, appliances and other features are approximate.



Dartmouth | 01803 832288 | dartmouth@winkworth.co.uk
 3a Market Street, Dartmouth, TQ6 9QE



for every step...

winkworth.co.uk

Winkworth wishes to inform prospective buyers and tenants that these particulars are a guide and act as information only. All our details are given in good faith and believed to be correct at the time of printing but they don't form part of an offeror contract. No Winkworth employee has authority to make or give any representation or warranty in relation to this property. All fixtures and fittings, whether fitted or not are deemed removable by the vendor unless stated otherwise and room sizes are measured between internal wall surfaces, including furnishings.