



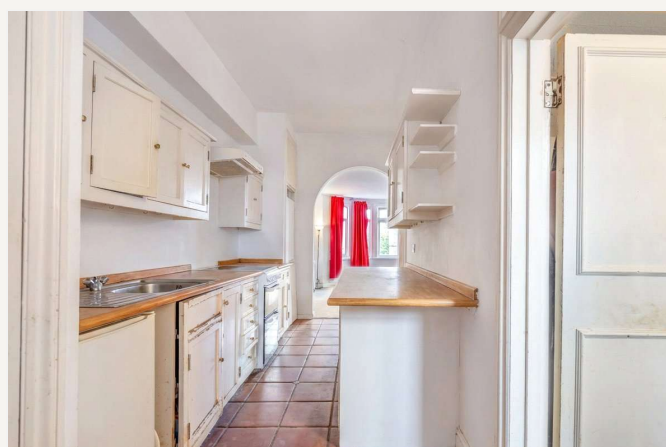
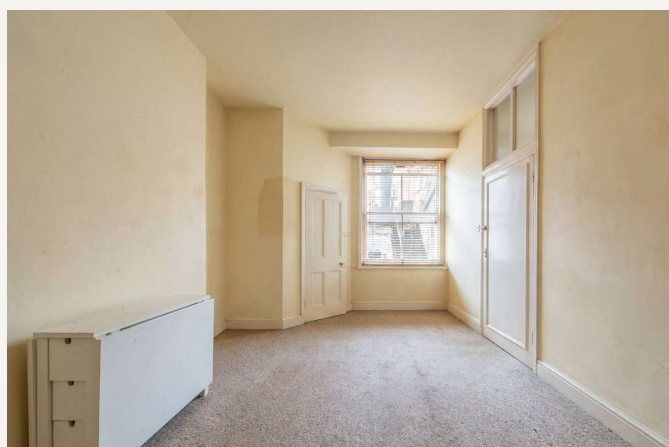
## Canfield Gardens, NW6

£650,000 *Share of Freehold*



A spacious one-bedroom garden flat requiring complete refurbishment, ideally located on the sought-after Canfield Gardens, NW6. Positioned on the ground floor of an attractive period building.

Transport links are excellent. Finchley Road Underground Station (Jubilee & Metropolitan Lines) is approximately 0.2 miles away, providing fast access to Central London. Swiss Cottage Underground Station (Jubilee Line) is around 0.4 miles away, while South Hampstead Overground Station is approximately 0.5 miles from the property. West Hampstead Underground, Overground, and Thameslink stations are also within 0.8 miles of the property.



**Winkworth West Hampstead**

020 7483 7602 | [westhampstead@winkworth.co.uk](mailto:westhampstead@winkworth.co.uk)

**Winkworth**

for every step...





## KEY FEATURES

- Double bedroom
- Shower Room
- Reception Room
- Kitchen
- Garden
- Patio



## MATERIAL INFO

**Tenure:** Share of Freehold  
**Lease Expiry Date:** 10/05/2982  
**Service Charge:** Ad Hoc  
**Council Tax Band:** D  
**EPC rating:** To be confirmed







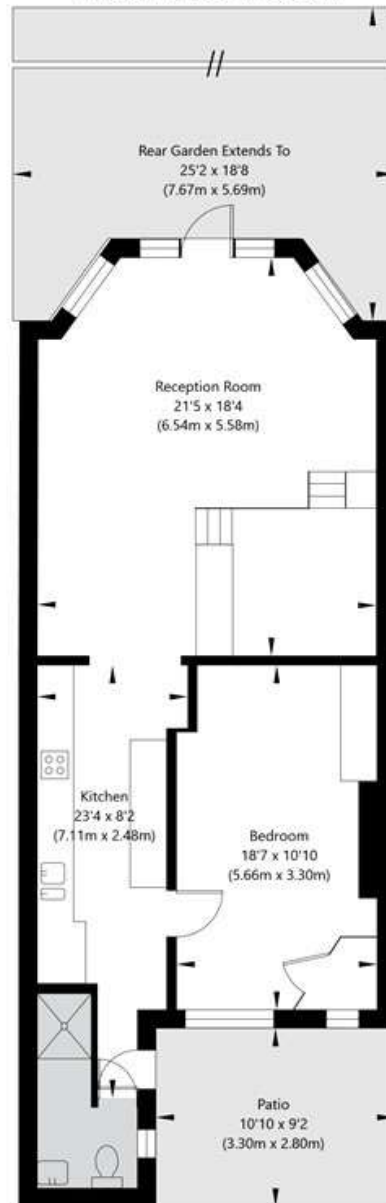
For more information, scan the QR code or visit the link below



<https://www.winkworth.co.uk/sale/property/WHP250179>

## Canfield Gardens, London NW6 3JL

Lower Ground Floor  
GROSS INTERNAL FLOOR AREA  
APPROX. 71.42 SQ M / 769 SQ FT



APPROXIMATE GROSS INTERNAL FLOOR AREA 71.42 SQ M / 769 SQ FT  
THIS FLOOR PLAN IS FOR ILLUSTRATIVE PURPOSES ONLY AND  
SHOULD BE USED FOR THIS PURPOSE BY PROSPECTIVE APPLICANTS AS ITS NOT TO SCALE.

(c) AMBERSHORE PIX LIMITED / PHOTO - VIDEO - FLOOR PLANS / 0800 999 1577 / WWW.AMBERSHOREPIX.CO.UK

Where no figures are shown, we have been unable to ascertain the information. All figures that are shown were correct at the time of printing.

**Winkworth West Hampstead**

020 7483 7602 | [westhampstead@winkworth.co.uk](mailto:westhampstead@winkworth.co.uk)

**Winkworth**

for every step...

Winkworth wishes to inform prospective buyers and tenants that these particulars are a guide and act as information only. All our details are given in good faith and believed to be correct at the time of printing but they don't form part of an offer or contract. No Winkworth employee has authority to make or give any representation or warranty in relation to this property. All fixtures and fittings, whether fitted or not are deemed removable by the vendor unless stated otherwise and room sizes are measured between internal wall surfaces, including furnishings.