



MOORHOUSE ROAD, W2
£675 PER WEEK (£2,925 PCM) UNFURNISHED

**A NEWLY REFURBISHED, BRIGHT AND VERY
 CHARMING ONE BEDROOM FLAT ON THE FIRST
 FLOOR OF THIS PERIOD BUILDING.**

Notting Hill Lettings | 0207 727 3227 | nottinghill@winkworth.co.uk

Winkworth

for every step...

winkworth.co.uk



DESCRIPTION:

A beautifully refurbished, bright and very charming one bedroom flat on the first floor of this period building. The spacious reception room has wonderfully high ceilings, a lovely balcony and leads on to a separate and fully fitted kitchen. The double bedroom with ensuite bathroom has plenty of built in storage and is available unfurnished. Viewings are highly recommended.

Utilities:

Electricity – Mains

Water – Mains

Sewerage – Mains

Heating – Gas

Broadband <https://checker.ofcom.org.uk/en-gb/broadband-coverage>

Mobile Coverage <https://checker.ofcom.org.uk/en-gb/mobile-coverage>

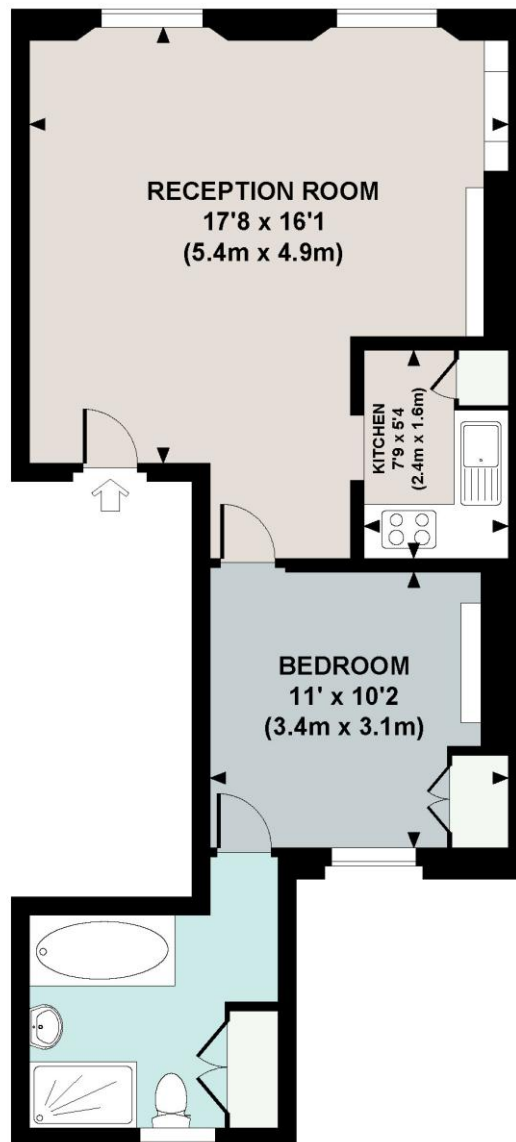
LOCATION:

Moorhouse Road is a peaceful, tree lined street in this sought-after pocket off Artesian Road, moments away from the boutiques and restaurants of Westbourne Grove and Ledbury Road.



MOORHOUSE ROAD, W2

Approx. gross internal area
518 Sq.Ft. / 48.1 Sq.M.



FIRST FLOOR



All measurements are approximate and for illustration purposes only as defined by the RICS Code of Measuring Practice © 2014. Dowling Jones Design www.dowlingjones.com 020 7610 9933

This floorplan is for illustration purposes only and is not to scale. The position and size of doors, windows, appliances and other features are approximate.

Energy Efficiency Rating		
	Current	Potential
Very energy efficient - lower running costs		
(92-100) A		
(81-91) B		
(69-80) C	79	81
(55-68) D		
(39-54) E		
(21-38) F		
(1-20) G		
Not energy efficient - higher running costs		
England, Scotland & Wales EU Directive 2002/91/EC		

Deposit: £3,375

Holding Deposit: £675

Council Tax Band: C (Westminster)

Where no figures are shown, we have been unable to ascertain the information. All figures that are shown were correct at the time of printing.

Notting Hill Lettings | 0207 727 3227 | nottinghill@winkworth.co.uk

Winkworth

for every step...

winkworth.co.uk

Winkworth wishes to inform prospective buyers and tenants that these particulars are a guide and act as information only. All our details are given in good faith and believed to be correct at the time of printing but they don't form part of an offer or contract. No Winkworth employee has authority to make or give any representation or warranty in relation to this property. All fixtures and fittings, whether fitted or not are deemed removable by the vendor unless stated otherwise and room sizes are measured between internal wall surfaces, including furnishings.