



Winkworth



Winkworth



Winkworth

CORFE CLOSE, HERTFORDSHIRE, WD6
OIRO £280,000 LEASEHOLD

WELL PRESENTED TWO BEDROOM TOP FLOOR APARTMENT IN SOUTH BOREHAMWOOD

Borehamwood | 020 8953 8899 | borehamwood@winkworth.co.uk



DESCRIPTION:

Situated in a quiet and sought after cul de sac on the South side of Borehamwood is this well presented two bedroom top (second) floor apartment with allocated parking.

Constructed by the highly regarded developers, Laing Homes the property provides circa 625 square feet of bright accommodation including a Southerly facing dual aspect double reception and Southerly facing bedrooms.

The property would be an ideal purchase for a first time buyer, downsizer or buy to let investor.

AT A GLANCE

- 2 Bedrooms
- South Borehamwood
- Allocated Parking Space
- 625 Square Feet
- Double Glazed
- 99 Year Lease
- Communal Gardens





Winkworth



Winkworth

Approximate Gross Internal Area = 58.1 sq m / 625 sq ft

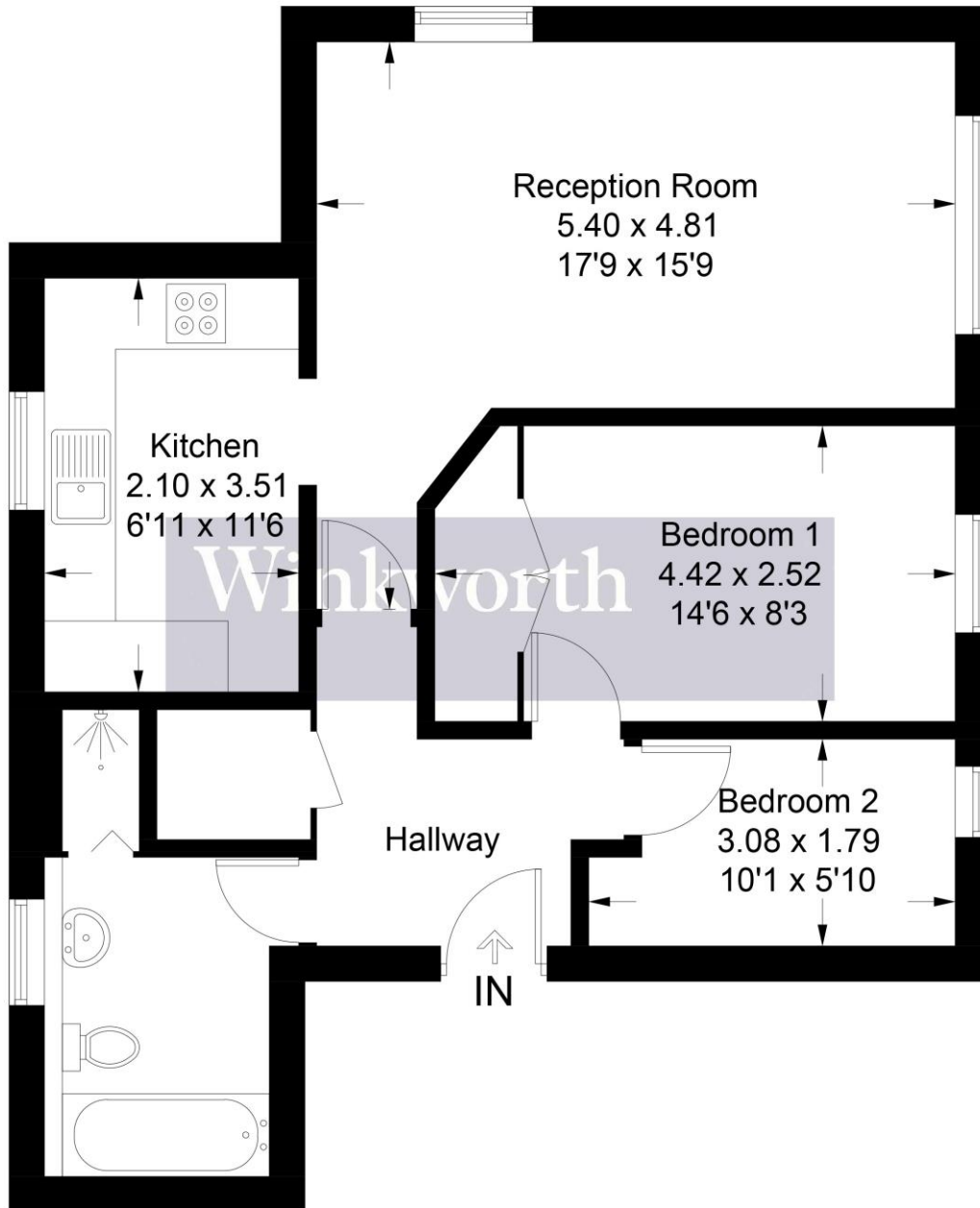
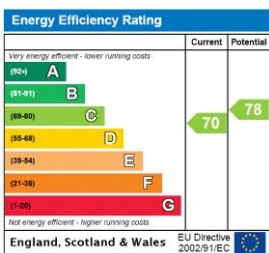


Illustration for identification purposes only, measurements are approximate, not to scale. Winkworth © 2024 (ID1036703)

This floorplan is for illustration purposes only and is not to scale. The position and size of doors, windows, appliances and other features are approximate.



Tenure: Leasehold
Term: Expires - 01/12/2123
Service Charge: £0 per annum
Ground Rent: £ 0 Annually (subject to increase)
Council Tax Band:

Where no figures are shown, we have been unable to ascertain the information. All figures that are shown were correct at the time of printing.