

Bridge Place, SW1V

£2,550 PER MONTH

FURNISHED

AT A GLANCE

- Hot Water and Heating Included
- Double bedroom
- open plan kitchen reception
- Double glazed windows
- Furnished

Winkworth

for every step...



Energy Efficiency Rating		
	Current	Potential
Very energy efficient - lower running costs		
(92+) A		
(81-91) B		
(69-80) C	81	81
(55-68) D		
(39-54) E		
(21-38) F		
(1-20) G		
Not energy efficient - higher running costs		
England, Scotland & Wales	EU Directive 2002/91/EC	

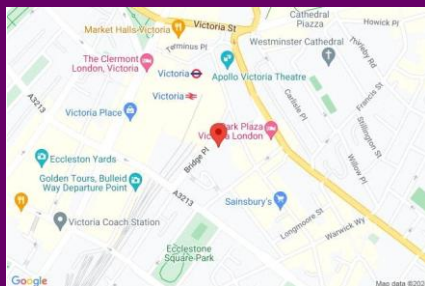
BRIDGE PLACE, SW1V

£2,550 PER MONTH

FURNISHED

HOT WATER AND HEATING INCLUDED IN RENT - A modern, fourth floor one bedroom apartment just moments from Victoria Station. The property spans across 562 ft and comprises of a good sized open plan kitchen reception with ample inbuilt storage, a good sized double bedroom with fitted wardrobes and a modern bathroom suite. The property further benefits from double glazed windows, lift access and a Porter.

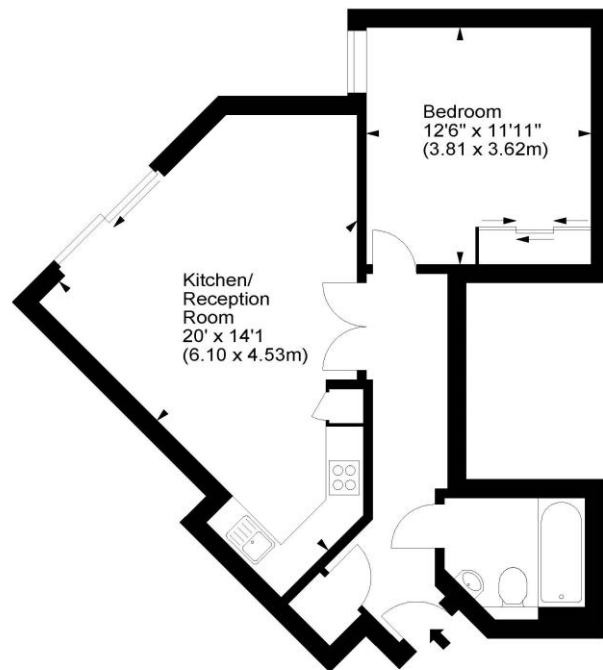
Bridge Place is superbly located in the heart of Victoria, one of London's most vibrant and well-connected areas. Just a short walk away are the boutiques, cafés, and fine dining of Belgravia and Sloane Square, while the theatres of the West End and the green open spaces of St James's Park are within easy reach. Victoria Station offers great transport links across London and beyond, including the Gatwick Express, Underground services, and numerous bus routes.



winkworth wishes to inform prospective buyers and tenants that these particulars are a guide and act as information only. All our details are given in good faith and believed to be correct at the time of printing but they don't form part of an offer or contract. No winkworth employee has authority to make or give any representation or warranty in relation to this property. All fixtures and fittings, whether fitted or not are deemed removable by the vendor unless stated otherwise and room sizes are measured between internal wall surfaces - including fireplaces.

Bridge Place, SW1

Approx. Gross Internal Area
562 Sq Ft - 52.21 Sq M



Fourth Floor

For illustration purposes only. Not to scale.
All measurements are taken and shown at floor level.
www.r3photography.co.uk © Photography / Floor Plans / Lease Plans / EPCs



Pimlico & Westminster | 020 7828 1786 |
pimlico@winkworth.co.uk

winkworth.co.uk/pimlico

Winkworth

for every step...