



ST. PAULS ROAD, LONDON, N1  
£595,000 LEASEHOLD

**WE ARE DELIGHTED TO OFFER THIS BRIGHT  
AND SPACIOUS TWO BEDROOM APARTMENT  
IN THE HEART OF CANONBURY.**

Islington | 0207 354 2480 | [islington@winkworth.co.uk](mailto:islington@winkworth.co.uk)

**Winkworth**

[winkworth.co.uk](http://winkworth.co.uk)

See things differently





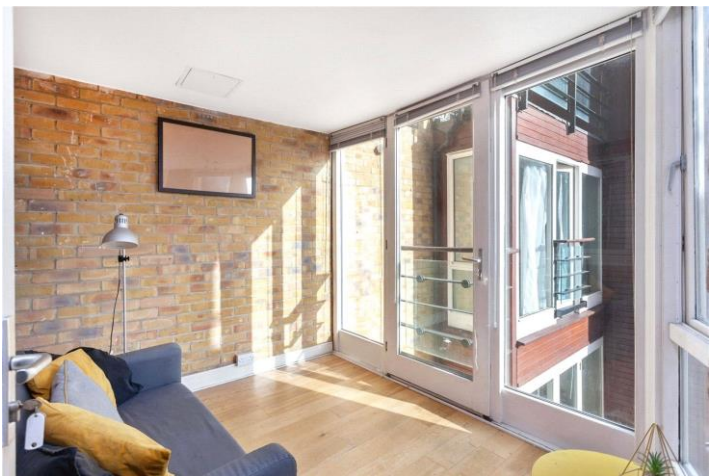
## DESCRIPTION:

Set across the first floor of this well-maintained modern development is this superb two bedroom flat. Standing at 775 sqft, the property offers well-proportioned, and light filled rooms throughout. Accommodation includes a bright living room with dining area, a fully integrated kitchen with ample worktop space which then opens out into a cleverly designed sun room benefitting from large windows and a Juliet balcony. Both bedrooms are good sized doubles, the master bedroom including built in storage and a wonderful en suite bathroom. The property is complete with a well sized family bathroom, an underground parking space and is offered to the market chain free.

St Pauls Road is conveniently located just moments from the many bars, restaurants and boutiques of Upper Street and is just a short distance away from Highbury fields. Highbury and Islington station (Victoria Line) is the closest underground providing easy access to the West End and Kings Cross. International travel is offered from St Pancras, whilst over ground services are provided from Canonbury station to West, South and East London and the City. Numerous bus routes can also be found close by creating some of the strongest transport links in Islington.

**Winkworth**

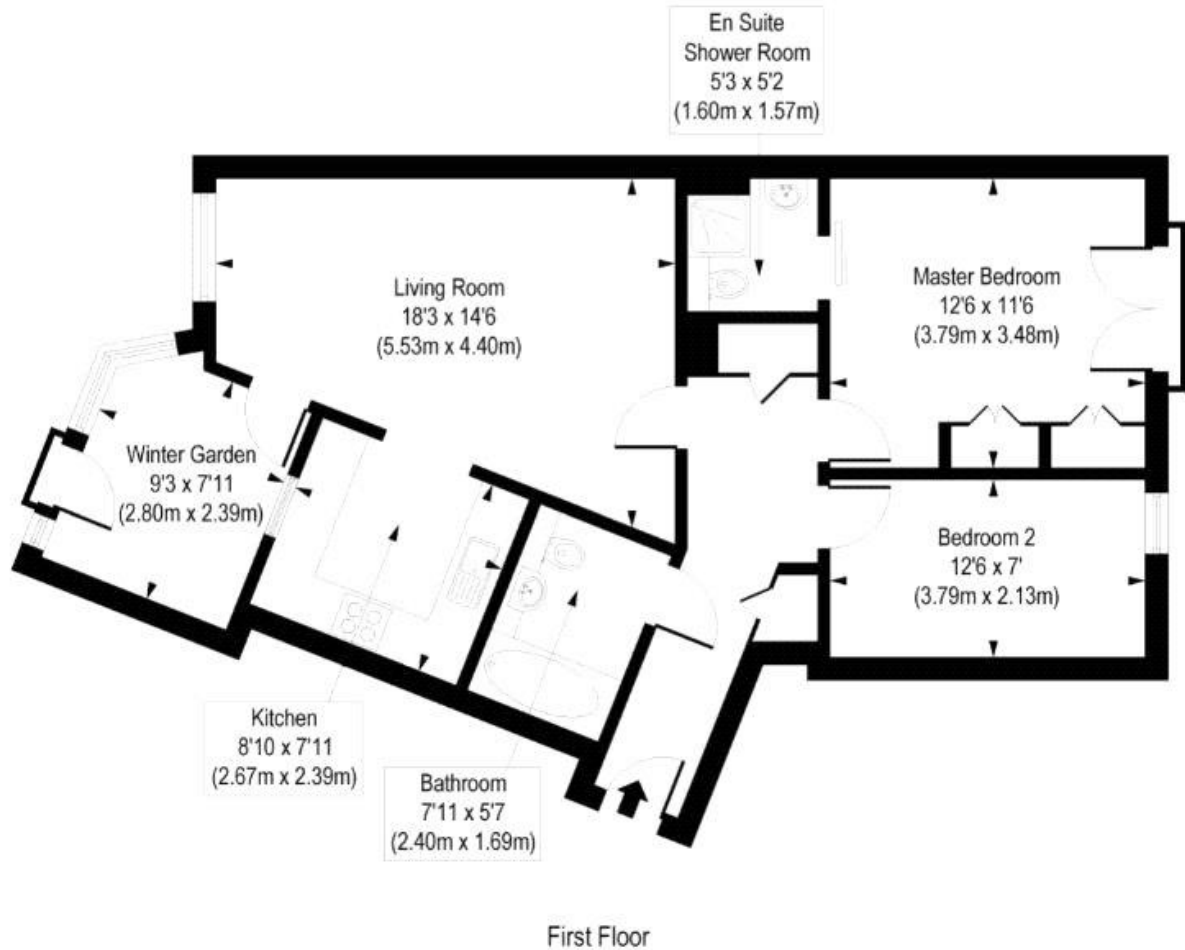
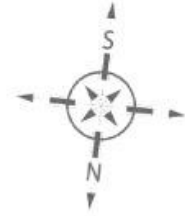




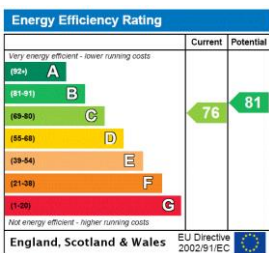
**Winkworth**

# St. Paul's Road, N1

Approx. Gross Internal Floor Area 775 sq. ft / 71.98 sq. m (Including Winter Garden)  
 Approx. Gross Internal Floor Area 697 sq. ft / 64.72 sq. m (Excluding Winter Garden)



This floorplan is for illustration purposes only and is not to scale. The position and size of doors, windows, appliances and other features are approximate.



Islington | 0207 354 2480 | islington@winkworth.co.uk



winkworth.co.uk

See things differently

Winkworth wishes to inform prospective buyers and tenants that these particulars are a guide and act as information only. All our details are given in good faith and believed to be correct at the time of printing but they don't form part of an offer or contract. No Winkworth employee has authority to make or give any representation or warranty in relation to this property. All fixtures and fittings, whether fitted or not are deemed removable by the vendor unless stated otherwise and room sizes are measured between internal wall surfaces, including furnishings.