



7 DIGBY ROAD

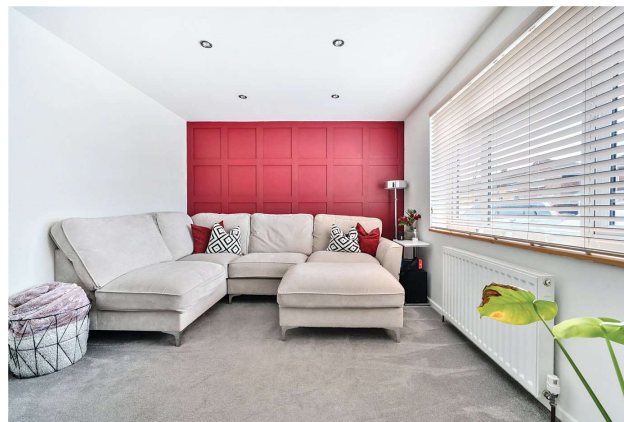
NEWBURY, RG14 1TS

A three bedroom end of terrace home with stunning kitchen diner, very generous rear garden and off street parking for several cars.

As you enter the property, the spacious living room is to your right. The room consists of a large window and a beautifully panelled feature wall. The kitchen is extremely modern, featuring a stunning kitchen island and bifold doors in the dining area leading onto the rear garden. The kitchen has neutral cupboards and a white worktop.

To the first floor are three bedrooms. Bedrooms one and two are a generous double. There is a third single bedroom. The family bathroom consists of a shower over the bath and white tiling throughout.

To the front of the property is paved driveway parking for two cars. There is side access taking you to the rear. The garden is a fantastic size with a decked area featuring a seating area and an indoor bar setup. There is a boarder down the side of the garden with mature shrubs. The rest of the garden is mainly laid to lawn.



Winkworth

AT A GLANCE

- 840ft²/78m²
- Living Room
- Kitchen Diner
- Two Double Bedrooms
- One Single Bedroom
- Family Bathroom
- Large Rear Garden
- Driveway Parking

UTILITIES

The property is connected to all mains and operates on gas central heating. There is Ultrafast broadband available in the area. There are no known mobile coverage issues.

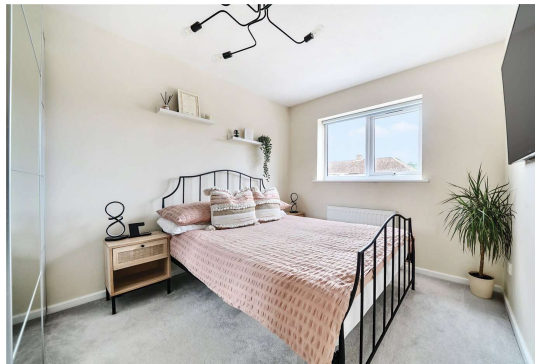
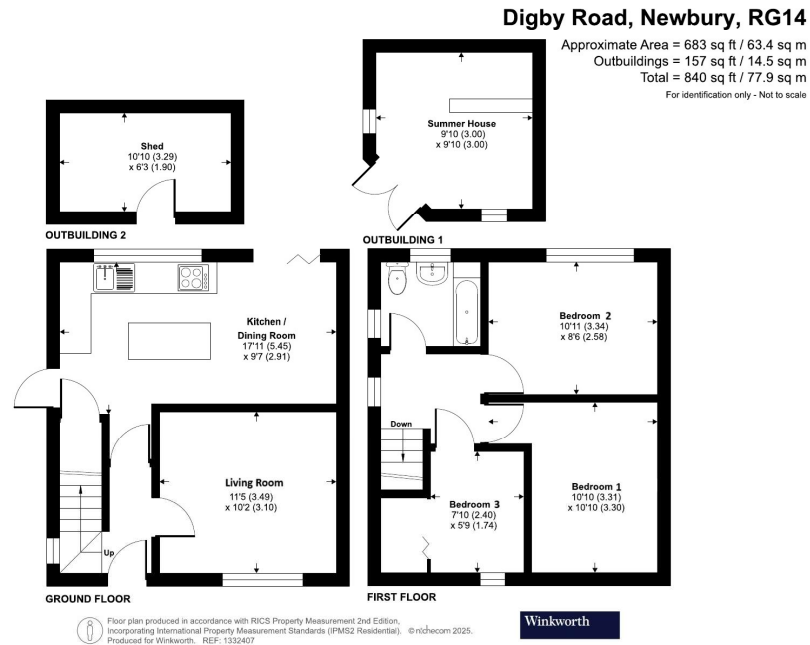
EPC - C
West Berkshire Council Tax Band - C

SITUATION

Located in Shaw, to the north of Newbury, the property is well located with easy transport connections, walking distance of Vodafone HQ and on the fringe of the countryside with plenty of walks.

DIRECTIONS

What3words//fund.trunk.spam



Newbury Office

43 Northbrook Street, Newbury, Berkshire RG14 1DT
01635 552552 | newbury@winkworth.co.uk

[winkworth.co.uk/newbury](https://www.winkworth.co.uk/newbury)

Winkworth

See things differently.