



FLAT 6 MANOR COURT
16 PERCY ROAD
BH5 1JF

LEASEHOLD
ASKING PRICE
£150,000

“A modern, character,
one bedroom, first floor
flat with off road
parking, 600 metres to
Boscombe Pier and 550
Metres to Boscombe
high street which
offers a range of shops,
restaurants, cafés and
bars”

Winkworth

for every step...

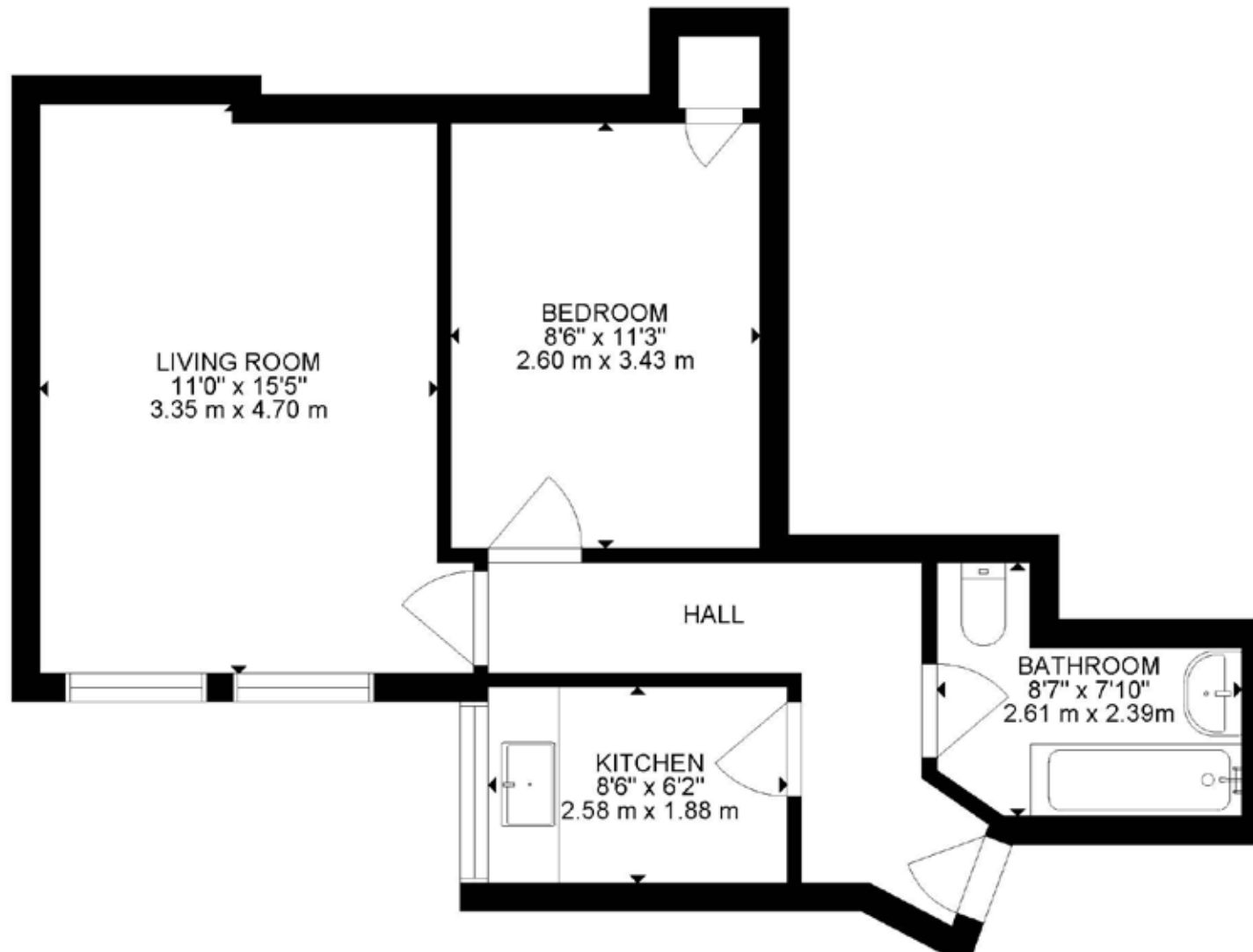
ASKING PRICE £550,000

One Double Bedroom
Modern Throughout
Character Flat
600 Metres To Boscombe Pier
550 Metres To Boscombe High Street
Off Road Parking

EPC: D | COUNCIL TAX: A | LEASEHOLD 105 YEARS REMAINING | MAINTENANCE £1200 P/A | GROUND RENT £200 P/A | PETS BY CONSENT | NO HOLIDAY LETS PERMITTED

01202 434365
southbourne@winkworth.co.uk





GROSS INTERNAL AREA
TOTAL: 446 SQ FT, 41 m²
SIZE AND DIMENSIONS ARE APPROXIMATE, ACTUAL MAY VARY

DISCLAIMER:

Winkworth wishes to inform prospective buyers that these particulars are a guide and act as information only. All our details are given in good faith and believed to be correct at the time of issue but they don't form part of an offer or contract. No Winkworth employee has authority to make or give any representation or warranty in relation to this property. All fixtures and fittings, whether fitted or not are deemed removable by the vendor unless stated otherwise and room sizes are measured between internal wall surfaces, including furnishings.



Lori Leon

lleon@winkworth.co.uk

07918 932490

Winkworth Southbourne

29 Southbourne Grove,
Bournemouth, Dorset, BH6
3QT

01202 434365

southbourne@winkworth.co.uk

winkworth.co.uk/southbourne

“Before embarking on her career in agency, Lori was a golf professional for many years following a successful amateur career playing at both county and international level. She started in agency in 2004 and has always worked in Bournemouth and the surrounding areas.

While working at her previous agency, she met James where they forged a firm friendship. Their passion to change the way people perceive estate agents, led them to joining forces and purchasing the Winkworth Southbourne franchise together. Lori has always lived in Southbourne and is very passionate about the area. Her children Zak and Kitty attended the local St James primary school. Both her children are now adults so in her spare time she enjoys travelling and big family get togethers when her youngest is home from university.”

Winkworth

for every step...