



THYME COTTAGE

TUBBS LANE, HIGHCLERE RG20 9RD

A beautiful four bedroom detached home with a garage, modern kitchen a stunning rear garden, situated in the heart of Highclere.

As you enter the property, you're greeted with a bright and airy entrance hall. The dining room is flooded with natural light and is open plan with the modern kitchen. There are grey cabinets with a darker top. The kitchen benefits from integrated appliances, tiled floor and access to the rear garden from both the kitchen and the dining room. The dual aspect living room spans the depth of the house and features a stunning exposed brick fireplace and French doors onto the garden. Downstairs also benefits from a cloakroom.

Upstairs are four great sized bedrooms. The master is dual aspect and provides built in storage and ensuite. Bedroom two also offers built in storage. The family bathroom consists of a shower over the bath, w/c and washbasin.

To the front of the property is large gravel driveway with access to the single garage, bordered with mature shrubs and bushes to ensure ultimate privacy. To the rear is an exquisite garden with a wraparound patio, perfect for alfresco dining. The rest of the garden is mainly laid to lawn with pretty flower borders. There is a shed for storage as well as rear access.



Winkworth

AT A GLANCE

- 1380ft² / 128m²
- Dining Room
- Modern Kitchen
- Dual Aspect Living Room
- Cloakroom
- Four Bedrooms
- Master with En-Suite
- Family Bathroom
- Single Garage
- Private Rear Garden

UTILITIES

The property is connected to all mains, apart from gas and operates on oil central heating. There is Superfast Broadband available in the area and there are no known mobile coverage issues.

EPC - D

Basingstoke And Deane Council Tax Band - E

SITUATION

Highclere is an extremely popular village with a well-established community situated to the south of Newbury. The village is well-known for its castle and is surrounded by some stunning countryside designated as an Area of Outstanding Natural Beauty. Attractions include the Kennet and Avon Canal, the North Hampshire Downs including Watership Down and the delightful Bourne Valley, with the area ideal for walking and cycling.

The village also boasts a pretty church. There are excellent schools in the area, including St Thomas' Woolton Hill, St Martin's East Woodhay, Thorngrove, Horris Hill, Cheam, St Gabriels, Marlborough College and Downe. House. Highclere is well placed for access to the A34, and therefore the M4 and south via the A303/M3. Newbury lies 5.3 miles to the north, with its railway station offering regular services to London Paddington, Reading and the West Country.

Thyme Cottage, Tubbs Lane, Highclere, Newbury, RG20

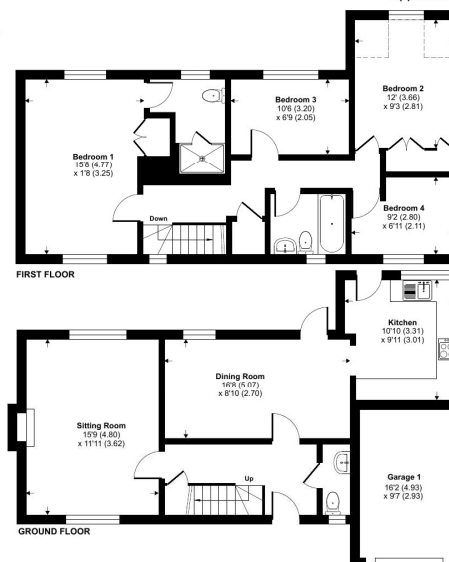
Approximate Area = 1205 sq ft / 111.9 sq m (excludes garage1)

Limited Use Area(s) = 20 sq ft / 1.8 sq m

Garage = 155 sq ft / 14.3 sq m

Total = 1380 sq ft / 128 sq m

For identification only - Not to scale



Denotes restricted
head height

Floor plan produced in accordance with RICS Property Measurement 2nd Edition, incorporating International Property Measurement Standards (IPMS2 Residential). Produced for Winkworth. REF: 1251177. © richcom 2025.

Winkworth



Newbury Office

43 Northbrook Street, Newbury, Berkshire RG14 1DT

01635 552552 | newbury@winkworth.co.uk

winkworth.co.uk/newbury

Winkworth

See things differently.