



HIGHLEVER ROAD, W10  
**£1,900 PER MONTH**

**Winkworth**





## HIGHLEVER ROAD, W10

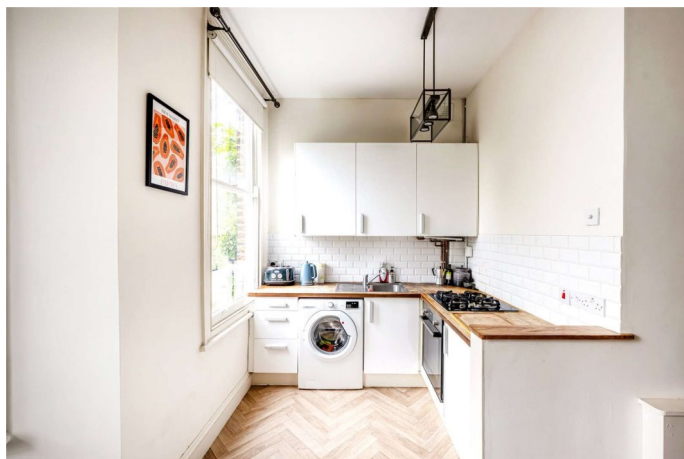
### Bright & Spacious One-Bedroom Flat – North Kensington

We are pleased to present this beautifully refurbished one-bedroom flat, ideally situated on a quiet, tree-lined street in the heart of North Kensington.

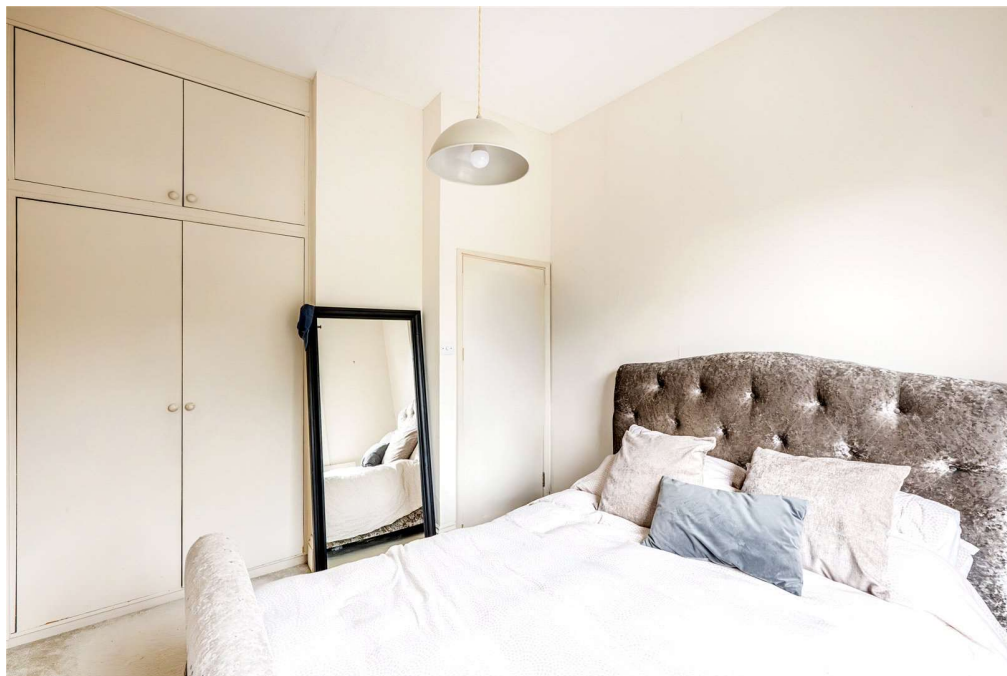
Located on the first floor of a charming period building, the property boasts exceptionally high ceilings and generous storage throughout. The flat comprises a spacious reception room with an open-plan kitchen, a stylish mezzanine level perfect for storage or occasional guest accommodation, a contemporary bathroom with a full-sized bathtub, and a large double bedroom.

Offered unfurnished, this elegant home blends classic features with modern comfort.

Conveniently located within walking distance to Latimer Road and Ladbroke Grove stations (Circle & Hammersmith & City Lines), offering excellent transport links across London.

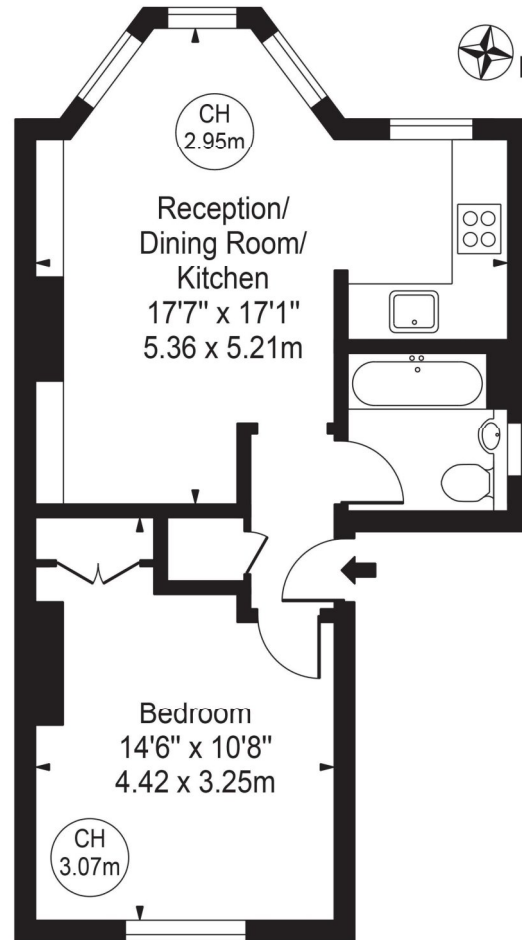






# Highlever Road

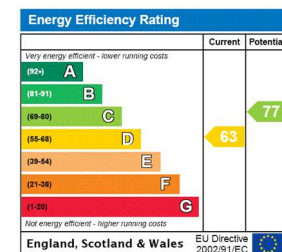
Approx. Gross Internal Area 414 Sq Ft - 38.46 Sq M



## First Floor

For Illustration Purposes Only - Not To Scale

This floor plan should be used as a general outline for guidance only and does not constitute in whole or in part an offer or contract. Any intending purchaser or lessee should satisfy themselves by inspection, searches, enquiries and full survey as to the correctness of each statement. Any areas, measurements or distances quoted are approximate and should not be used to value a property or be the basis of any sale or let. Copyright Morriarti Photography & Design LTD



North Kensington | 020 7792 5000 | northkensington@winkworth.co.uk

winkworth.co.uk

Winkworth wishes to inform prospective buyers and tenants that these particulars are a guide and act as information only. All our details are given in good faith and believed to be correct at the time of printing but they don't form part of an offer or contract. No Winkworth employee has authority to make or give any representation or warranty in relation to this property. All fixtures and fittings, whether fitted or not are deemed removable by the vendor unless stated otherwise and room sizes are measured between internal wall surfaces, including furnishings.

Winkworth