



Winkworth
for every step...

2  2  2  EPC = D

FLAT 7, DONNYBROOK, 153 MUDEFORD LANE, BH23 3HR **PRICE: OFFERS IN EXCESS OF £500,000**

Winkworth

for every step...

A spacious and well presented ground floor apartment measuring over 1000 sq.ft within the highly sought after "Donnybrook" development opposite the Christchurch Harbour Hotel and enjoying some "harbour glimpses".

Flat 7, Donnybrook, 153 Mundeford Lane, Christchurch BH23 3HR

Price: offers in excess of £500,000

Tenure: Share of freehold

01425 274444

mundeford@winkworth.co.uk

Situation:

The property is situated within easy reach of some of the area's most beautiful beaches and unspoilt coastline with Mundeford's sandy Avon Beach and Friars Cliff Beach easily accessible. Mundeford Quay is a short walk away.

A short car ride from the property is the New Forest National Park offering some of the country's most stunning countryside interwoven with ancient woodlands.

The nearby historic town of Christchurch has a wide range of shops, restaurants, and banks. More extensive facilities can be found further afield at Bournemouth and Southampton. Christchurch Railway Station provides a fast and regular service to Bournemouth, Southampton and London Waterloo. Bournemouth and Southampton International Airports are also within a short drive.

Description:

Donnybrook was constructed around 1970 by Pinewood Homes Limited to a traditional standard and features include good room sizes, gas fire central heating and UPVC double glazed windows.

The property is accessed via a communal front door with secure entry phone system. The door to the apartment opens on to a spacious entrance hall.

Spacious lounge (approx. 20ft) with feature fireplace and patio door to a good sized patio area with glimpses of Christchurch Harbour.

Separate dining room with side aspect window open through to the lounge area.

Fitted kitchen with front aspect window, a range of integrated appliances. Plenty of storage cupboards and drawers.

Master bedroom with fitted wardrobes and luxury en suite shower room.

Bedroom two also has fitted wardrobes and there is a separate family bathroom.

Garage situated in a nearby block with casual parking spaces available.

The flat is set within well maintained communal gardens and grounds.

Share of freehold (remainder of 999 year lease attached).

Maintenance & Service charge – approx. £2000 per annum.

BCP Council Tax - Band "D"

Summary:

- Luxury ground floor apartment
- Two double bedrooms
- Superb master bedroom with large en-suite shower room Well-presented throughout
- Magnificent south facing sitting room with Harbour glimpses
- Fitted kitchen with a range of integrated appliances
- Separate dining room
- Gas fired central heating and UPVC double glazing
- Separate family bathroom
- Single garage and casual car-parking
- Beautifully maintained communal gardens and grounds
- No forward chain



Winkworth
for every step...



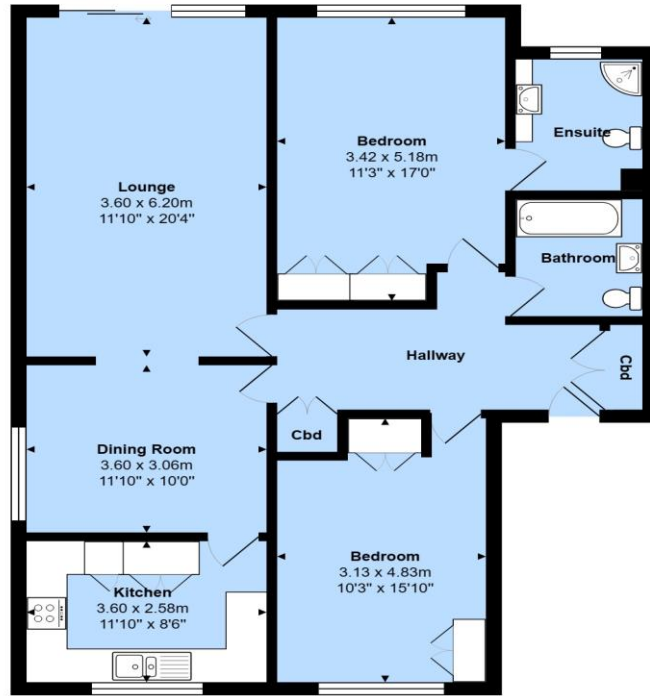
Winkworth
for every step...



Winkworth
for every step...



Winkworth
for every step...



Total Area: 99.1 m² ... 1066 ft²
 All measurements are approximate and for display purposes only



Energy Efficiency Rating		
	Current	Potential
Very energy efficient - lower running costs		
(92+) A		
(81-91) B		
(69-80) C		76
(55-68) D	68	
(39-54) E		
(21-38) F		
(1-20) G		
Not energy efficient - higher running costs		
England, Scotland & Wales	EU Directive 2002/91/EC	

Winkworth wishes to inform prospective buyers and tenants that these particulars are a guide and act as information only. All our details are given in good faith and believed to be correct at the time of printing, but they don't form part of an offer or contract. No Winkworth employee has authority to make or give any representation or warranty in relation to this property. All fixtures and fittings, whether fitted or not are deemed removable by the vendor unless stated otherwise and room sizes are measured between internal wall surfaces, including furnishings.

Mudeford | 01425 274444 | mudeford@winkworth.co.uk



for every step...