



STREATHAM HIGH ROAD, SW16  
£1,250 PER MONTH UNFURNISHED

## A NEWLY REFURBISHED ONE DOUBLE BEDROOM FLAT CLOSE TO STREATHAM STATION

Streatham | 020 8769 6699 | [streatham@winkworth.co.uk](mailto:streatham@winkworth.co.uk)

**Winkworth**

for every step...

[winkworth.co.uk](http://winkworth.co.uk)



## DESCRIPTION:

Located in central Streatham next to Streatham Station (Thameslink) and the ALDI and M&S stores, is this clean and fresh one double bedroom Victorian upper floor conversion flat. The property comprises: an entrance hall which leads to a large, bright double bedroom with deep built-in wardrobes and large galleried sash window, a modern white bathroom with bath and shower, a WC and a wash hand basin. There is a 17ft bright and airy open-plan, fully fitted kitchen and reception room. The fitted kitchen is equipped with the usual appliances and has plenty of wall and base units for ample storage. Available exclusively through Winkworth, the flat is available now and is offered unfurnished.

## AT A GLANCE

- Second Floor Flat
- One Double Bedroom
- Open Plan Kitchen/Reception Room
- Fitted Bathroom
- Wooden Flooring
- Ample Storage
- Lambeth Council Tax Band: B
- Unfurnished
- Available Now

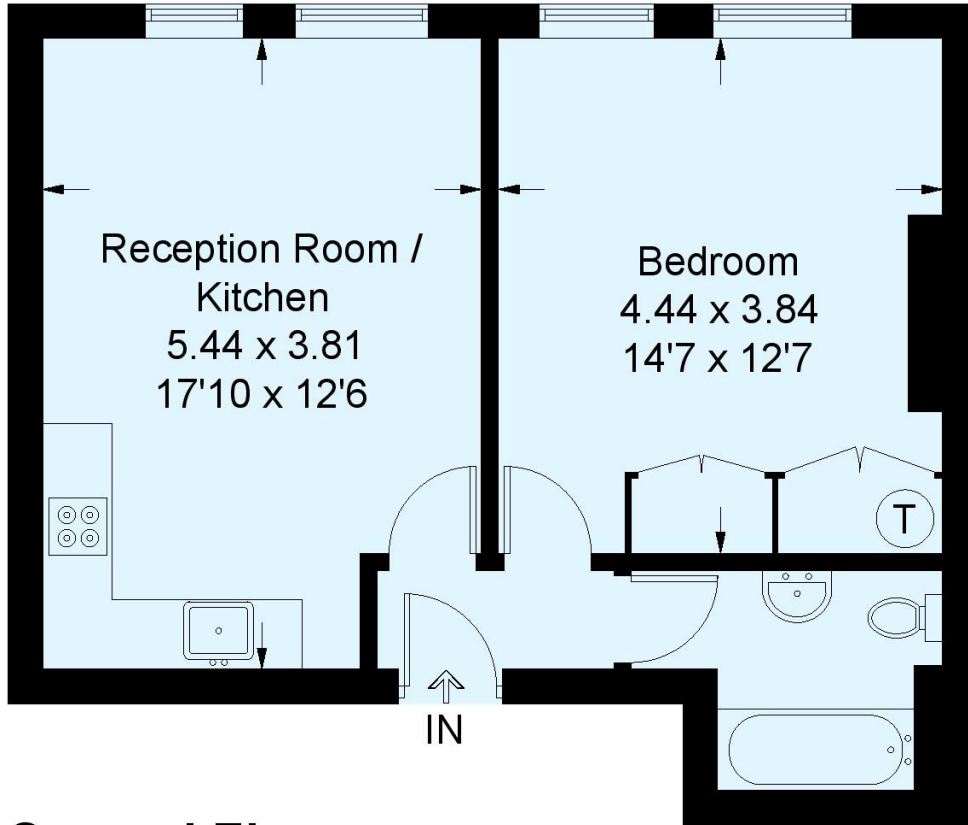






# Streatham High Road, SW16

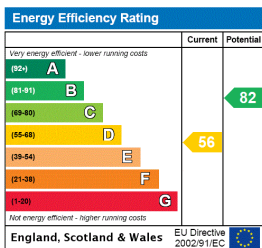
Approximate Gross Internal Area = 44.7 sq m / 481 sq ft



## Second Floor

This plan is for layout guidance only. Not drawn to scale unless stated. Windows and door openings are approximate. Whilst every care is taken in the preparation of this plan, please check all dimensions, shapes and compass bearings before making any decisions reliant upon them. (ID377435)

This floorplan is for illustration purposes only and is not to scale. The position and size of doors, windows, appliances and other features are approximate.



Streatham | 020 8769 6699 | streatham@winkworth.co.uk



for every step...

winkworth.co.uk

Winkworth wishes to inform prospective buyers and tenants that these particulars are a guide and act as information only. All our details are given in good faith and believed to be correct at the time of printing but they don't form part of an offer or contract. No Winkworth employee has authority to make or give any representation or warranty in relation to this property. All fixtures and fittings, whether fitted or not are deemed removable by the vendor unless stated otherwise and room sizes are measured between internal wall surfaces, including furnishings.