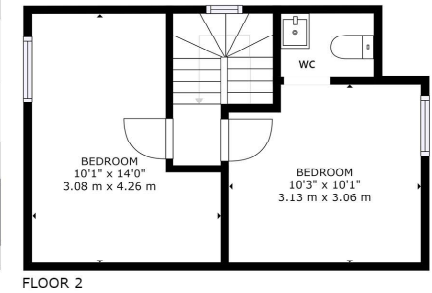
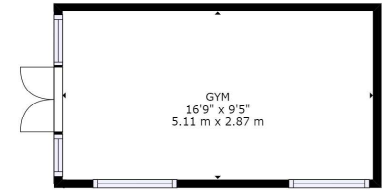
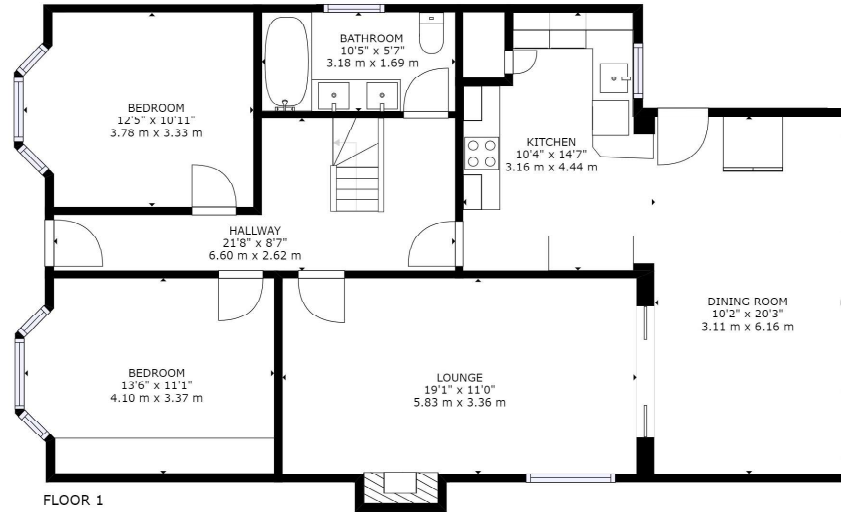




6 Middle Road
Bournemouth, BH10 5JU
Offers In Excess Of **£425,000**





GROSS INTERNAL AREA
FLOOR 1: 1326 sq. ft. 123 m², FLOOR 2: 315 sq. ft. 29 m²
TOTAL: 1641 sq. ft. 152 m²
 SIZES AND DIMENSIONS ARE APPROXIMATE, ACTUAL MAY VARY.





OFFERS IN EXCESS OF £425,000
FREEHOLD

A fantastic opportunity to purchase this modern four bedroom detached chalet bungalow with a south facing garden, large home office/gym and ample off street parking, positioned in this popular location close to amenities.

Four Bedrooms
Luxury Bathroom
Modern Kitchen/Diner
Driveway
Popular Residential Location
Gym/Home Office
Detached
Chalet Bungalow
South Facing Garden
EPC D
Council Tax Band D

01202 434365
ferndown@winkworth.co.uk



LOCATION

Middle Road is conveniently located for local amenities and the nearby larger towns of Ferndown and Bournemouth, which have a range restaurants, shopping and leisure facilities are also easily accessible. Award winning beaches are less than 15 minutes away and there is easy road access for the commuter by car.

Winkworth Ferndown

406 Ringwood Road, Ferndown, Dorset, BH22 9AU

01202 434365 | ferndown@winkworth.co.uk

winkworth.co.uk/ferndown

Winkworth