



HUDSON BUILDING, 11 CHICKSAND STREET, SHOREDITCH, E1
£550,000 LEASEHOLD

A TWO DOUBLE BEDROOM TWO BATHROOM APARTMENT WITH SOUTH FACING JULIETTE BALCONY

Shoreditch | 020 7749 7650 | shoreditch@winkworth.co.uk

Winkworth



DESCRIPTION:

Set on the top floor of this well-kept modern block is a large two double bedroom apartment with en-suite bathroom, ideally located just off Brick Lane. The property comprises entrance hall, storage cupboard, master bedroom, second bedroom, family bathroom, and open plan kitchen and living room. The property benefits from a secure fob entry system, wooden flooring, and a Juliette balcony.

The property has been tastefully decorated with a neutral contemporary feel throughout. The master bedroom features a built-in wardrobe and en-suite shower room. The family bathroom is spacious, with a sizeable second double bedroom. The open plan living room and kitchen offers a wonderfully light social entertaining space.

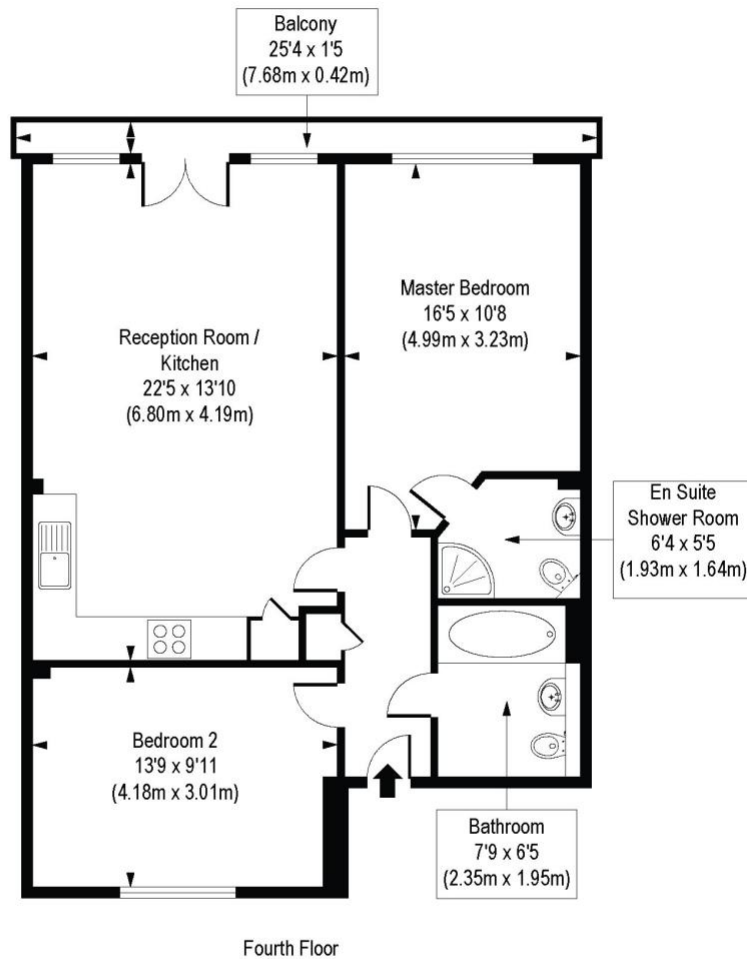
The Hudson Building is ideally located for easy living, being so close to the City and being a short distance to Aldgate East & Aldgate underground stations, as well as Whitechapel station (Crossrail). Liverpool Street Station is also within easy walking distance, and you also have a vast array of boutique shops, art galleries, pop ups, cafes, bars and restaurants with Brick Lane and Spitalfields on your doorstep.

Winkworth



Winkworth

Hudson Building, E1
Approx. Gross Internal Area 744 sq. ft / 69.09 sq. m



COMPLIANT WITH RICS CODE OF MEASURING PRACTICE. Floorplan is for illustrative purposes only and is not to scale. Every attempt has been made to ensure the accuracy of the floorplan shown, however all measurements, fixtures, fittings and data shown are an approximate interpretation for illustrative purposes only. Liability for errors, omissions or mis-statement through negligence or otherwise is hereby excluded.

This floorplan is for illustration purposes only and is not to scale. The position and size of doors, windows, appliances and other features are approximate.

Shoreditch | 020 7749 7650 | shoreditch@winkworth.co.uk

Winkworth

winkworth.co.uk

See things differently

Winkworth wishes to inform prospective buyers and tenants that these particulars are a guide and act as information only. All our details are given in good faith and believed to be correct at the time of printing but they don't form part of an offer or contract. No Winkworth employee has authority to make or give any representation or warranty in relation to this property. All fixtures and fittings, whether fitted or not are deemed removable by the vendor unless stated otherwise and room sizes are measured between internal wall surfaces, including furnishings.