



1, MOUNT TERRACE, LONDON, E1  
£1,700 PER MONTH

A STUNNING TWO DOUBLE BEDROOM SPLIT  
LEVEL PERIOD APARTMENT WITH ACCESS TO  
A PRIVATE GARDEN.

Islington | 0207 354 2480 | [islington@winkworth.co.uk](mailto:islington@winkworth.co.uk)

**Winkworth**

Tenant Fees Apply: Details of fees for tenant referencing, tenancy agreement admin fees and renewal fees are available on the Winkworth website and the link can be found with the displayed rent for the property. Tenants should ensure they are fully conversant with these upfront fees and other costs that are involved at the outset of the tenancy before making an offer to rent and your local Winkworth office will provide written details upon request.

[winkworth.co.uk](http://winkworth.co.uk)

See things differently



## DESCRIPTION:

A well-proportioned two-double bedroom split level period apartment with access to a private garden. The apartment provides a generous living room with wooden floors, family sized bathroom, two double bedrooms and a sizable kitchen. On entry to the flat you are greeted with a charming semi open plan living room/kitchen area, dual aspect windows allowing plenty of natural light. The kitchen has a pleasant view overlooking the private garden with plenty of worktop space and gas oven. The stairs lead to the half landing and gives access via the back door to the walled garden and then continues to the bathroom and bedrooms. On the lower ground floor, there is a generous master bedroom with large storage area and a further second double bedroom. There are quality furnishings provided however unfurnished is also an option.

The property is in a fantastic location being a stone's throw from Whitechapel Station (Crossrail) and moments from Aldgate, Aldgate East and Liverpool Street underground stations as well as Shadwell Overground and DLR thus providing unrivalled access across the City. You also have a vast range of local amenities on your doorstep with Whitechapel High Street, Commercial Street, the historic Brick Lane and the iconic Spitalfields market with an abundance of boutiques, shops, bars, cafes, bars and restaurants.

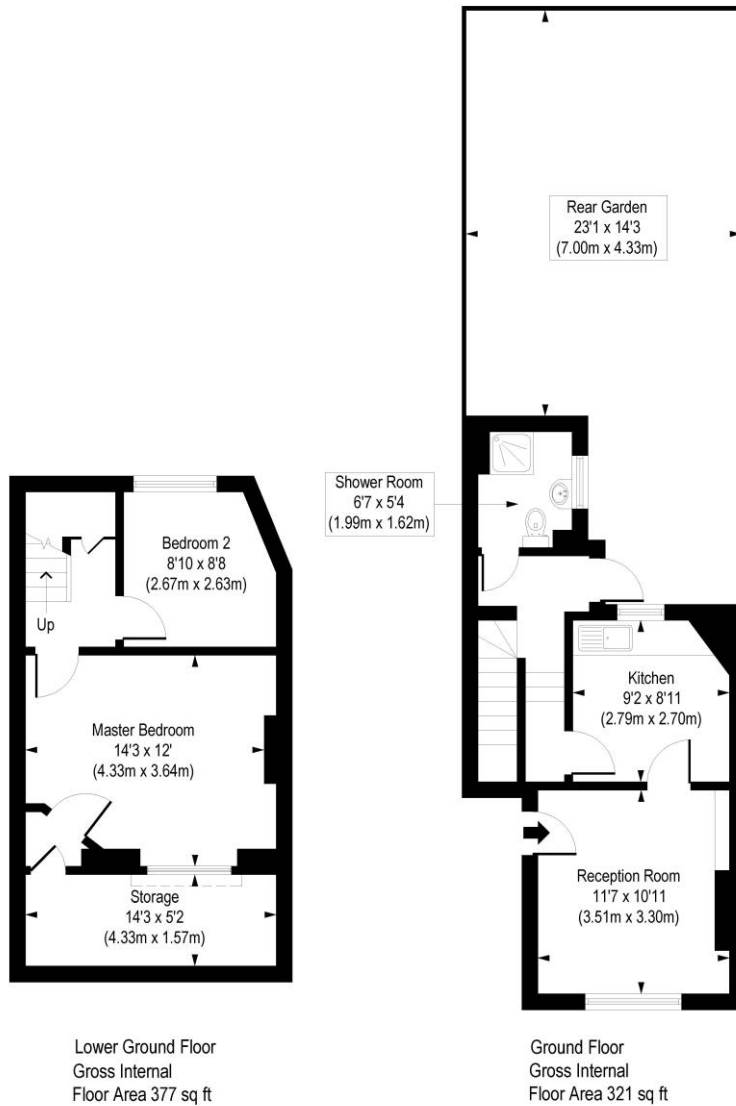
**Winkworth**



**Winkworth**

# Mount Terrace, E1

Approx. Gross Internal Floor Area 698 sq. ft / 64.83 sq. m



COMPLIANT WITH RICS CODE OF MEASURING PRACTICE. Floorplan is for illustrative purposes only and is not to scale. Every attempt has been made to ensure the accuracy of the floorplan shown, however all measurements, fixtures, fittings and data shown are an approximate interpretation for illustrative purposes only. Liability for errors, omissions or mis-statement through negligence or otherwise is hereby excluded.

This floorplan is for illustration purposes only and is not to scale. The position and size of doors, windows, appliances and other features are approximate.

Islington | 0207 354 2480 | [islington@winkworth.co.uk](mailto:islington@winkworth.co.uk)

**Winkworth**

[winkworth.co.uk](http://winkworth.co.uk)

See things differently

Winkworth wishes to inform prospective buyers and tenants that these particulars are a guide and act as information only. All our details are given in good faith and believed to be correct at the time of printing but they don't form part of an offer or contract. No Winkworth employee has authority to make or give any representation or warranty in relation to this property. All fixtures and fittings, whether fitted or not are deemed removable by the vendor unless stated otherwise and room sizes are measured between internal wall surfaces, including furnishings.