



ALDRIDGE ROAD VILLAS, W11
£585,000 LEASEHOLD

A VERY BRIGHT TWO-BEDROOM MAISONETTE ON THE SECOND AND THIRD FLOOR OF A PERIOD BUILDING IN THIS SOUGHT AFTER LOCATION, PRESENTED IN EXCELLENT CONDITION THROUGHOUT.

Notting Hill Sales | 0207 727 3227 | nottinghill@winkworth.co.uk

Winkworth

for every step...

winkworth.co.uk



DESCRIPTION:

A very bright two-bedroom maisonette on the second and third floor of a period building in this sought after location, presented in excellent condition throughout. The property comprises; entrance hall on second floor, two double bedrooms, refurbished bathroom, stairs leading up to living room and separate fitted kitchen.

Utilities:

Electricity – Mains

Water – Mains

Sewerage – Mains

Heating – Gas

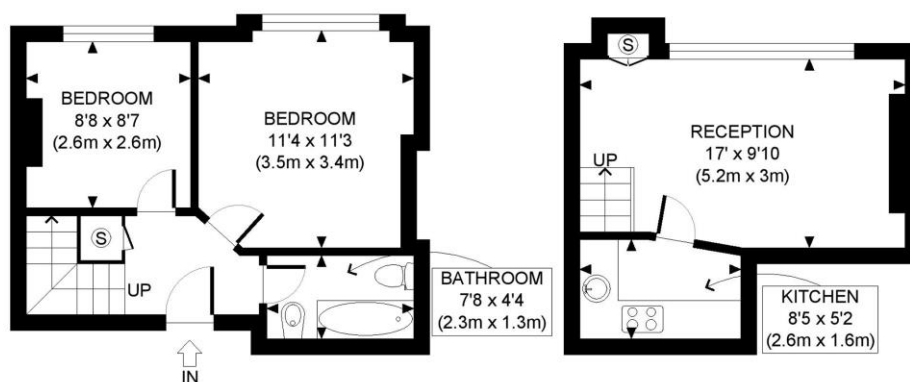
Broadband <https://checker.ofcom.org.uk/en-gb/broadband-coverage>

Mobile Coverage <https://checker.ofcom.org.uk/en-gb/mobile-coverage>

LOCATION:

Aldridge Road Villas is a peaceful, residential street running north from Westbourne Park Road, a short walk from the many shops, restaurants and bars of Ledbury Road and Westbourne Grove. Westbourne Park underground is just moments away.





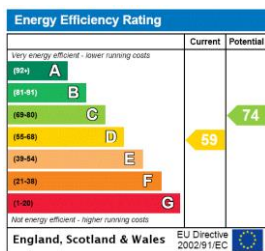
APPROX. GROSS INTERNAL FLOOR AREA: 508 SQ FT/ 47 SQM

Winkworth

This plan is for illustrative purposes only and should be used as such by any prospective client. Whilst every attempt has been made to ensure the accuracy of the Floor Plan contained here, measurements of the doors, windows, rooms and any other items are approximate and no responsibility is taken for any errors, omissions, or misstatement. The services, systems and appliances shown have not been tested and no guarantee as to the operability or efficiency can be given.

PROPERTY PHOTO PLANS
ONE STOP SHOP FOR PROPERTY REPRESENTATION

This floorplan is for illustration purposes only and is not to scale. The position and size of doors, windows, appliances and other features are approximate.



Tenure: Leasehold

Term: 102 year and 5 months

Service Charge: £2086 per annum

Ground Rent: £75 Annually (subject to increase)

Council Tax Band: E (Westminster)

Where no figures are shown, we have been unable to ascertain the information. All figures that are shown were correct at the time of printing.

Winkworth

Notting Hill Sales | 0207 727 3227 | nottinghill@winkworth.co.uk

for every step...

winkworth.co.uk

Winkworth wishes to inform prospective buyers and tenants that these particulars are a guide and act as information only. All our details are given in good faith and believed to be correct at the time of printing but they don't form part of an offer or contract. No Winkworth employee has authority to make or give any representation or warranty in relation to this property. All fixtures and fittings, whether fitted or not are deemed removable by the vendor unless stated otherwise and room sizes are measured between internal wall surfaces, including furnishings.