



FLAT 72, GROVE HOUSE, CHELSEA MANOR STREET, LONDON, SW3
£700,000 LEASEHOLD

A WELL-PROPORTIONED TWO-BEDROOM APARTMENT IN THE HEART OF CHELSEA

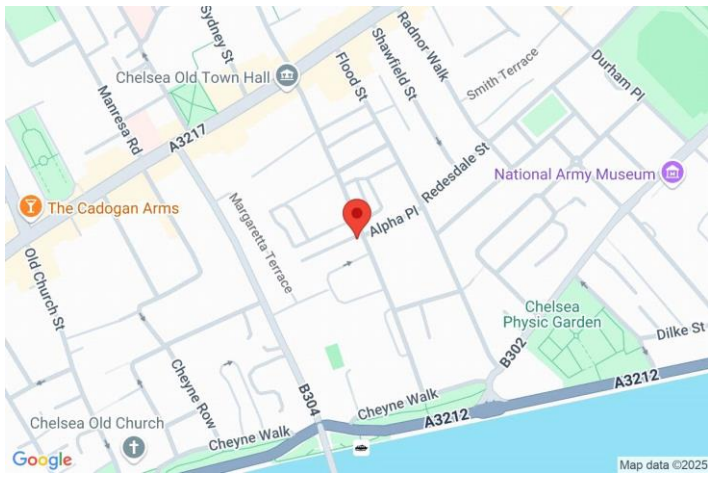
Knightsbridge & Chelsea | 0207 589 6616 | knightsbridge@winkworth.co.uk



DESCRIPTION:

Situated on the first floor of Grove House on Chelsea Manor Street, this spacious flat offers two double bedrooms, a separate kitchen, a large reception room, and a bathroom. The property benefits from good natural light and is in good condition, offering an excellent opportunity for a buyer to move straight in or modernise further to their own taste. Located moments from the vibrant King's Road and close by Sloane Square, South Kensington, and Gloucester Road stations, the flat is ideally positioned for access to shops, restaurants, and transport links.

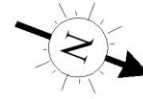




GROVE HOUSE, SW3

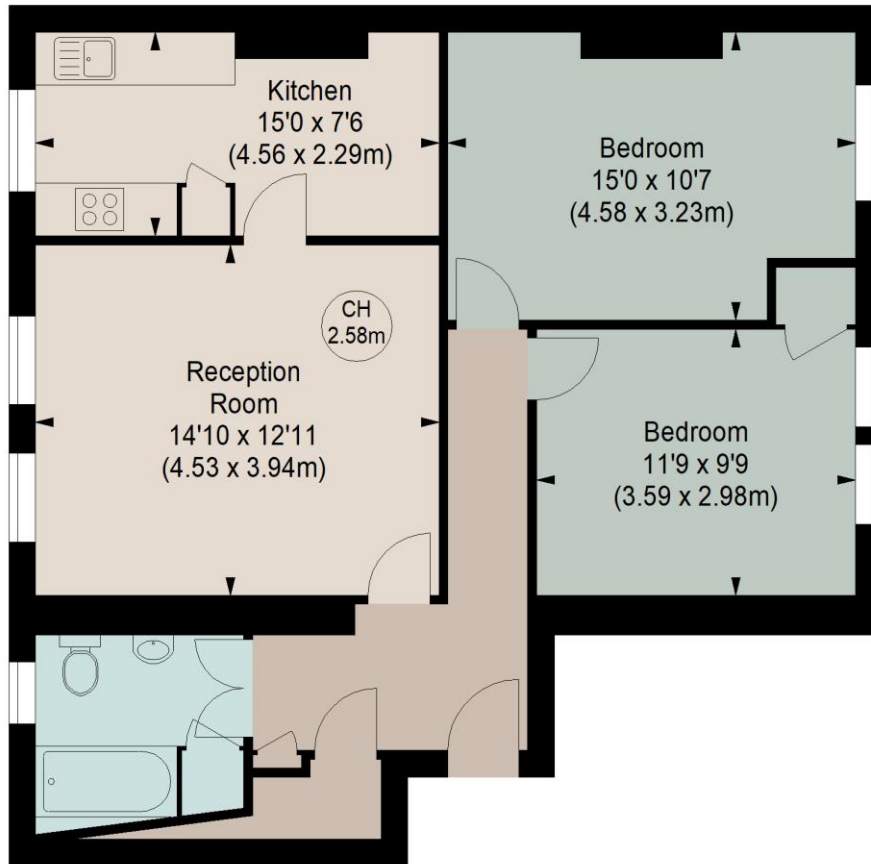
Approximate gross internal area

779 sq ft / 72.37 sq m



Key :

CH - Ceiling Height



FIRST FLOOR

Although every attempt has been made to ensure accuracy, all measurements are approximate.
This floorplan is for illustrative purposes only and not to scale.
Measured in accordance with RICS standards.

This floorplan is for illustration purposes only and is not to scale. The position and size of doors, windows, appliances and other features are approximate.

Score	Energy rating	Current	Potential
92+	A		
81-91	B		
69-80	C	77 C	82 B
55-68	D		
39-54	E		
21-38	F		
1-20	G		



Tenure: Leasehold

Term: 84 year and 10 months

Service Charge: £3,828 pa

Ground Rent: £ 10 pa

Council Tax Band: D

Where no figures are shown, we have been unable to ascertain the information. All figures that are shown were correct at the time of printing.