



Benhams, Bentley Close, Winchester, Hampshire, SO23 7FG

Winkworth

Benhams, Bentley Close, Winchester, Hampshire, SO23 7FG



Wonderful Maisonette in a Popular Village

This spacious maisonette is situated on the first floor of a super purpose-built block of just four apartments, constructed by Bendall Developments Ltd in 2005. The apartment feels incredibly light courtesy of the number of windows, and this is complemented by the pleasing neutral décor throughout.

The open plan sitting/dining room is a great size with double doors opening onto a Juliet balcony. Adjacent is the modern kitchen which is well-appointed with fitted units providing ample storage cupboards. Integrated appliances include double oven, gas hob, extractor, dishwasher, washer/dryer and fridge/freezer.

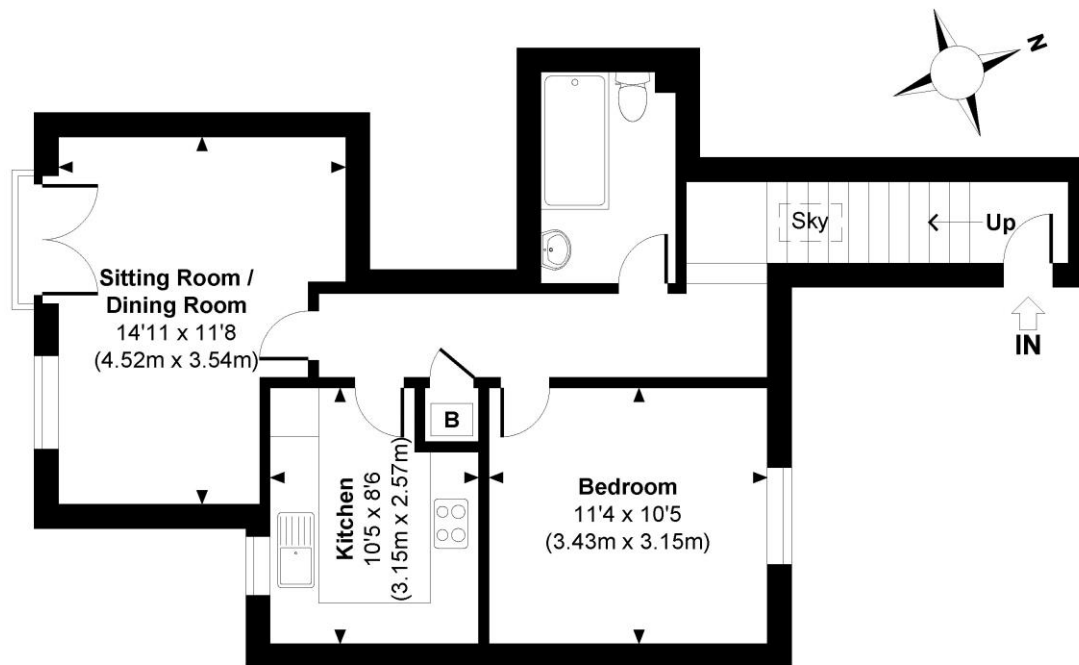
The double bedroom is an excellent size and is situated opposite the smart bathroom with bath and shower over.

The property benefits from off road parking spaces and its own private, low maintenance, rear garden with useful garden shed.



Benhams, Bentley Close

Approximate Gross Internal Area
Total = 540 Sq Ft / 50.13 Sq M



FIRST FLOOR



© www.propertyfocus.co | Professional Property Photography & Floorplans

This plan is for illustrative purposes only and is not to scale. If specified, the Gross Internal Area (GIA), dimensions, North point orientation and the size and placement of features are approximate and should not be relied on as a statement of fact. No guarantee is given for the GIA and no responsibility is taken for any error, omission or misrepresentation.

Benhams, Bentley Close, Winchester, Hampshire, SO23 7FG

Directions

Leaving Winchester on the Andover Road, take the first right hand turn into Worthy Lane (B3047). After approximately 2 miles, turn left into Bedfield Lane. At the junction turn right into Springvale Road and take the first left into Bentley Close. Benhams can be found on the left-hand side, on the corner of Glendee Close.

Location

Bentley Close is in the heart of the village of Kings Worthy and a short distance from Kings Worthy Primary School. Locally there are two public houses, a Tesco Express, post office and farm shop/café. Kings Worthy is an excellent location for access to the A34, A33 and M3 motorway. The City of Winchester is a short distance away, with its mainline railway station (links to London Waterloo in about 60 minutes), high street shops, boutiques, library, coffee shops, public houses, restaurants, theatre, cinema, museums and, of course, the City's historic cathedral.

Tenure: Leasehold

Services

Mains gas, electricity, water and drainage

Winchester City Council

Council tax band: B

EPC rating: C

Viewings

Strictly by appointment with Winkworth Winchester Office

Winkworth.co.uk/winchester

Winkworth Winchester

2 Black Swan Buildings, Southgate Street, Winchester, SO23 9DT
01962 866 777 | winchester@winkworth.co.uk

Winkworth Country House Department

13 Charles II Street, St James's, London, SW1Y 4QU
020 7870 4878 | countryhouse@winkworth.co.uk

Winkworth

See things differently