



Searle House, St John's Wood, London, NW8

£1,095,000 *Leasehold*

2  1  2 

We are pleased to present this spacious two double bedroom apartment, located on the fourth-floor of this wonderful modern development which was completed in 2015. The property benefits from fantastic south-westerly facing views from a private 21ft balcony accessed directly from the reception room and guest bedroom. There is an array of features, such as under floor heating, oak engineered wooden flooring, Lutron lighting, Miele kitchen appliances, inset LED ceiling lights, bespoke fitted wardrobes to each bedroom, with a beautiful en-suite shower room to the main bedroom. The property also benefits from a secure underground allocated parking space and the development is located 150 metres away from Regent's Park and Primrose Hill, there are other attractions such as London Zoo, Lord's Cricket Ground within the immediate vicinity as well as the newly landscaped St John's Wood High Street, which is home to many fine restaurants and boutique shopping facilities, the local tube station (Jubilee line) is conveniently located 0.6 miles away from the property.



Winkworth St John's Wood

020 7586 7001 | stjohnswood@winkworth.co.uk



KEY FEATURES

- Two Bedrooms
- En-suite
- Bathroom
- South West Aspect
- Private Balcony
- Underfloor Heating
- Lutron Lighting
- Miele Kitchen Appliances
- Bespoke Furniture
- Underground Allocated Parking
- Leasehold



MATERIAL INFO

Tenure: Leasehold

Lease Expiry Date: 23/04/3013

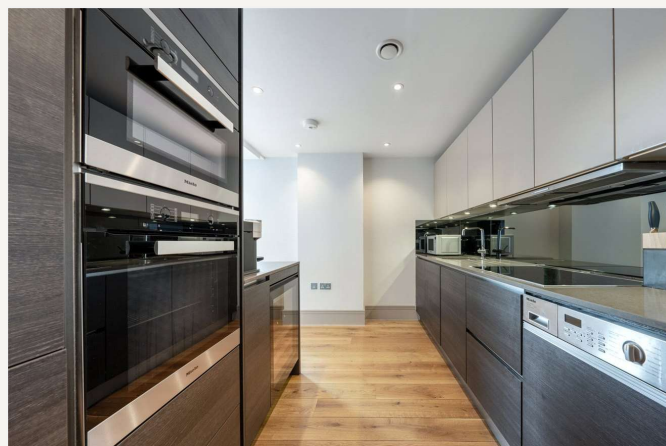
Service Charge: £9,558.08 per annum

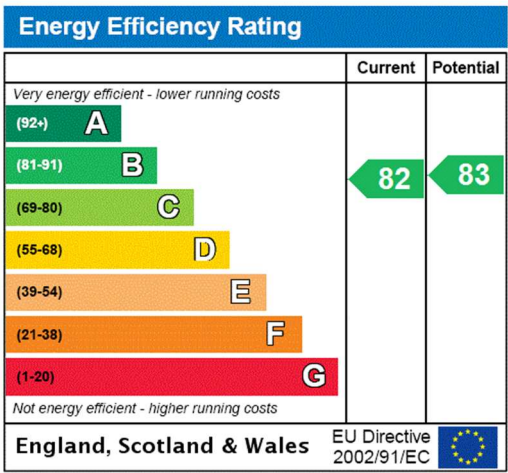
Service Charge Note: Parking Space Service Charge £1,541.44 per annum

Ground Rent: £650 Annually (subject to increase)

Council Tax Band: F

EPC rating: B





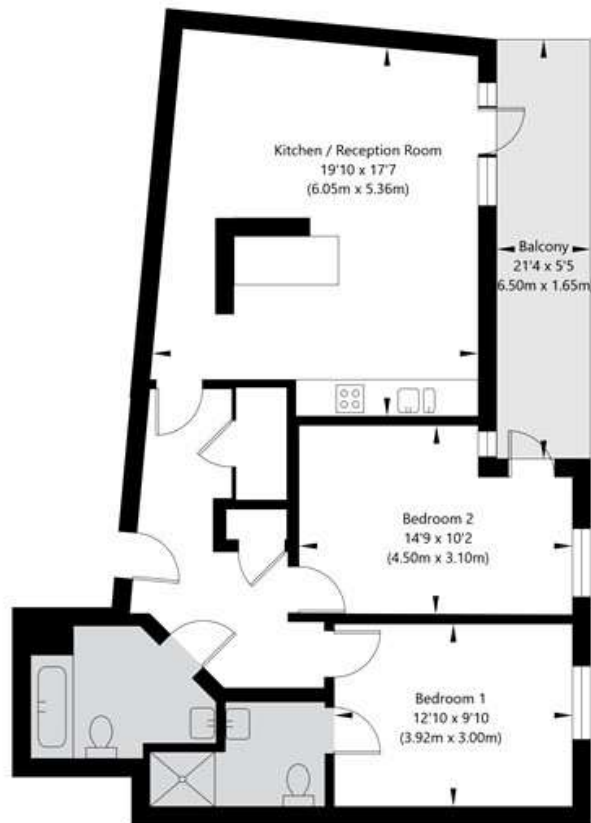
For more information, scan the QR code or visit the link below



<https://www.winkworth.co.uk/sale/property/SJD240041>

Searle House, Cecil Grove St John's Wood, London, NW8 7EB

Fourth Floor
GROSS INTERNAL FLOOR AREA
APPROX. 79.68 SQ M / 858 SQ FT



APPROXIMATE GROSS INTERNAL FLOOR AREA 79.68 SQ M / 858 SQ FT
THIS FLOOR PLAN IS FOR ILLUSTRATIVE PURPOSES ONLY AND
SHOULD BE USED FOR THIS PURPOSE BY PROSPECTIVE APPLICANTS AS ITS NOT TO SCALE.

(c) AMBERSHORE PIX LIMITED / PHOTO - VIDEO - FLOOR PLANS / 0800 999 1577 / WWW.AMBERSHOREPIX.CO.UK

Where no figures are shown, we have been unable to ascertain the information. All figures that are shown were correct at the time of printing.

Winkworth St John's Wood

020 7586 7001 | stjohnswood@winkworth.co.uk

Winkworth wishes to inform prospective buyers and tenants that these particulars are a guide and act as information only. All our details are given in good faith and believed to be correct at the time of printing but they don't form part of an offer or contract. No Winkworth employee has authority to make or give any representation or warranty in relation to this property. All fixtures and fittings, whether fitted or not are deemed removable by the vendor unless stated otherwise and room sizes are measured between internal wall surfaces, including furnishings.