

BURNS ROAD, NW10

£1,950 PER MONTH UNFURNISHED

**FIRST FLOOR FLAT LOCATED CLOSE TO
TRANSPORT LINKS AND THE AMENITIES OF
WILLESDEN JUNCTION**

Kensal & Queens Park | 0208 960 4947 | kensalrise@winkworth.co.uk

Winkworth

for every step...

winkworth.co.uk



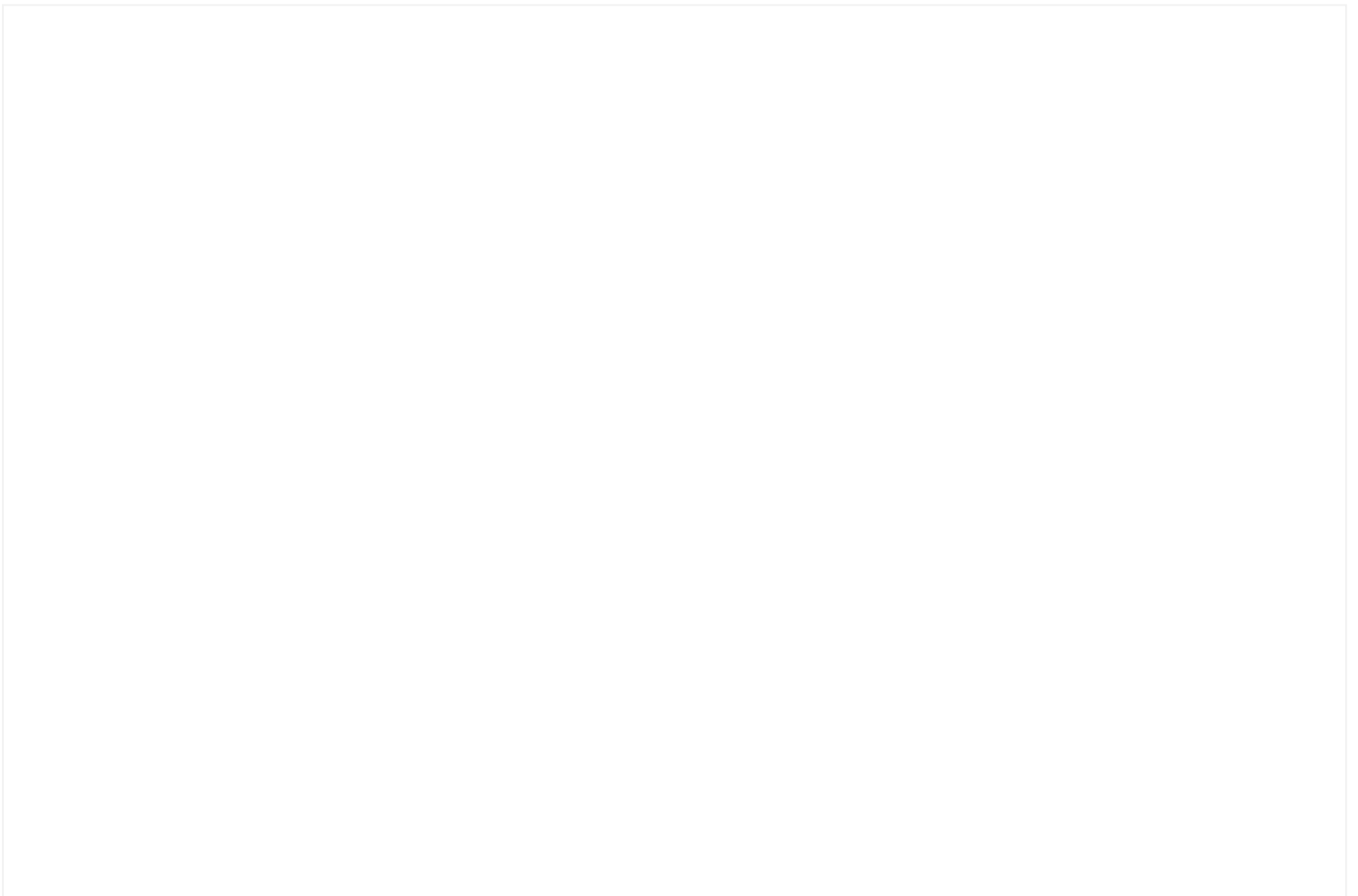
DESCRIPTION:

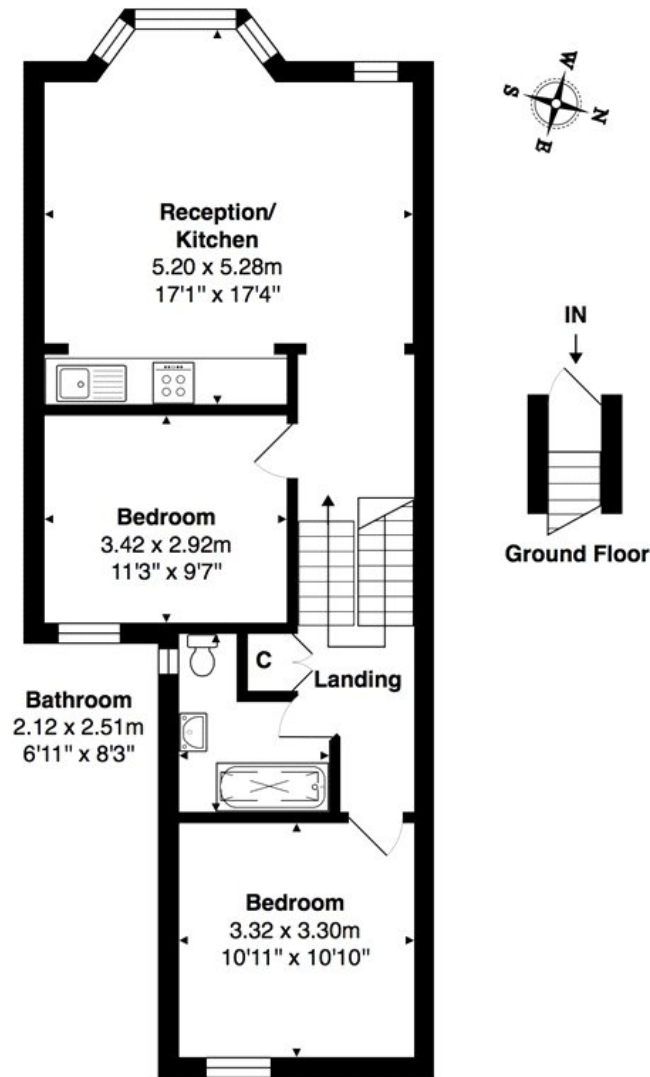
Newly renovated, this first floor flat has been finished to a fantastic standard. Comprising of two double bedrooms with a light grey coloured carpets, a modern three piece bathrooms offering ample storage, stylish tiled flooring and a large skylight. The main feature is the open plan kitchen reception which has been open up into the landing offering extra living space and a bright and airy feel to the room. Additional features include wooden flooring throughout living areas, double glazing and a separate utility cupboard.

Council tax - (Band C)

Ward - Harlesden

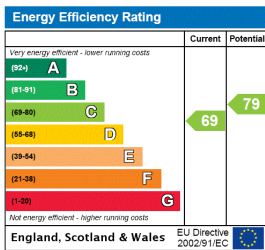






Total Area: 62.5 m² ... 673 ft²
 All measurements are approximate and for display purposes only

This floorplan is for illustration purposes only and is not to scale. The position and size of doors, windows, appliances and other features are approximate.



Kensal & Queens Park | 0208 960 4947 | kensalrise@winkworth.co.uk



for every step...

winkworth.co.uk

winkworth wishes to inform prospective buyers and tenants that these particulars are a guide and act as information only. All our details are given in good faith and believed to be correct at the time of printing but they don't form part of an offer or contract. No Winkworth employee has authority to make or give any representation or warranty in relation to this property. All fixtures and fittings, whether fitted or not are deemed removable by the vendor unless stated otherwise and room sizes are measured between internal wall surfaces, including furnishings.