



ALDERNEY STREET, SW1V

£950,000

SHARE OF FREEHOLD

At a glance...

- Two Double Bedrooms
- Conservatory
- Two Grand Reception Rooms
- Lovely Condition
- Private Garden
- Council Tax Band: G

Winkworth

for every step...



Score	Energy rating	Current	Potential
92+	A		
81-91	B		
69-80	C	69 C	76 C
55-68	D		
39-54	E		
21-38	F		
1-20	G		

ALDERNEY STREET, SW1V

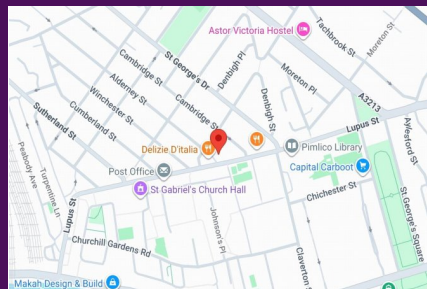
£950,000

SHARE OF FREEHOLD

Offering over 900 sq ft this fabulous property spans two floors of a well looked after, early Victorian building.

Entered on the ground floor the flat has two grand, high-ceilinged reception rooms, a bright separate kitchen, two good double bedrooms, modern bathroom and a conservatory which could be used as a home office. The flat also offers a fantastic private garden.

Presented in excellent condition and offering a share of the freehold the flat would make a fantastic London home or luxurious London base.



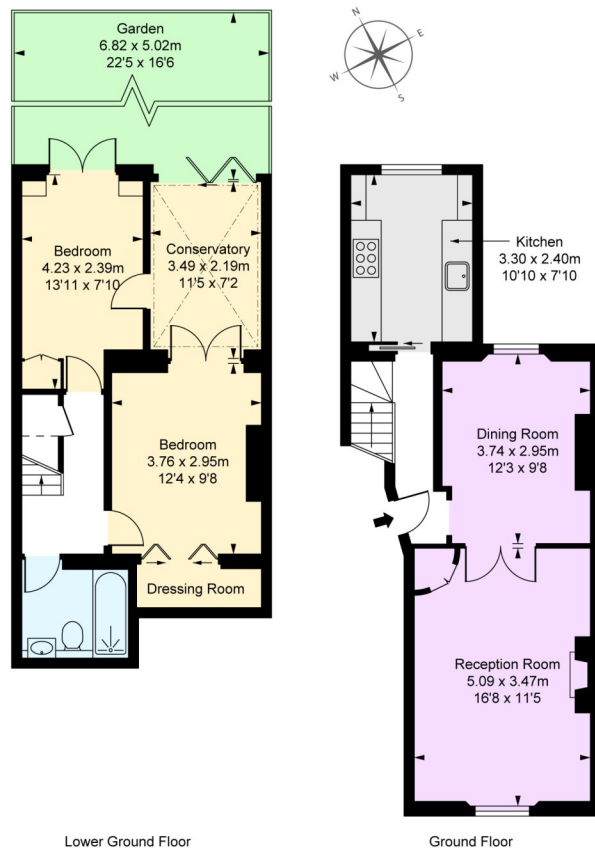
winkworth wishes to inform prospective buyers and tenants that these particulars are a guide and act as information only. All our details are given in good faith and believed to be correct at the time of printing but they don't form part of an offer or contract. No winkworth employee has authority to make or give any representation or warranty in relation to this property. All fixtures and fittings, whether fitted or not are deemed removable by the vendor unless stated otherwise and room sizes are measured between internal wall surfaces - including fire-chimneys.

Alderney Street, SW1V

Approximate Gross Internal Area
84.8 sq m / 912 sq ft

(Including restricted height
under 1.5m (4' 11"))

(CH = Ceiling Heights)



FULHAM
PERFORMANCE
PRECISION YOU CAN TRUST

This plan is not to a given scale. A detailed layout plan with dimensions is available on request. All quoted measurements and areas are within 1% tolerance and have been prepared in accordance with industry standards as defined in the RICS Code of Measuring Practice © Fulham Performance

Pimlico & Westminster

020 7828 1786

pimlico@winkworth.co.uk

winkworth.co.uk/pimlico-westminster

Winkworth

for every step...