



FARADAY ROAD, W10
£3,466.67 PER MONTH

Winkworth



FARADAY ROAD, W10

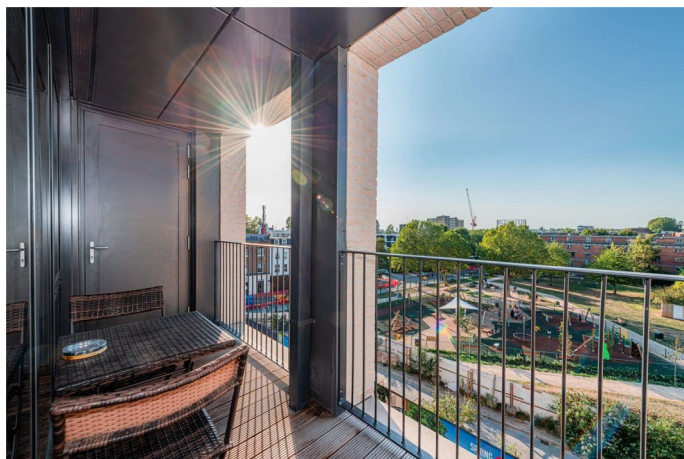
Stunning Modern Apartment with Balcony & Parking – Portobello Square

A beautifully designed fourth-floor apartment in the highly sought-after Portobello Square development, offering a stylish and contemporary lifestyle in the heart of West London. The property includes a private balcony and a secure underground parking space.

Flooded with natural light, this sleek home features high-spec finishes throughout.

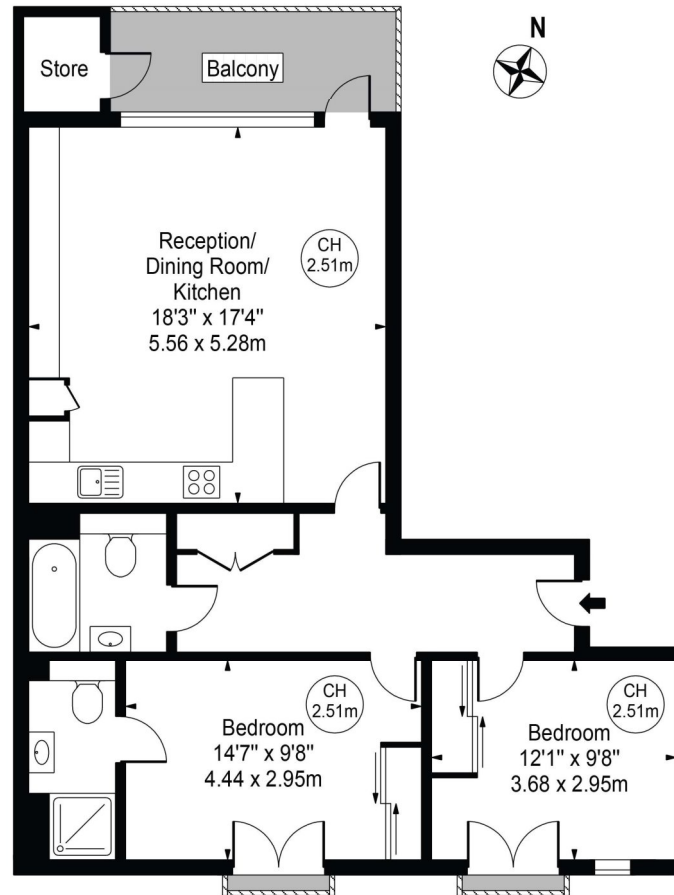
LOCATION

Faraday Road is ideally located just a short walk from the vibrant and eclectic mix of shops, restaurants, and markets along Golborne Road and Portobello Road. Excellent transport links are available via Ladbroke Grove Underground Station, only a few minutes away.





Faraday Road
Approx. Gross Internal Area 824 Sq Ft - 76.55 Sq M
(Excluding Store)



Fourth Floor
For Illustration Purposes Only - Not To Scale

This floor plan should be used as a general outline for guidance only and does not constitute in whole or in part an offer or contract. Any intending purchaser or lessee should satisfy themselves by inspection, searches, enquiries and full survey as to the correctness of each statement. Any areas, measurements or distances quoted are approximate and should not be used to value a property or be the basis of any sale or let.

North Kensington | 020 7792 5000 | northkensington@winkworth.co.uk

winkworth.co.uk

Winkworth wishes to inform prospective buyers and tenants that these particulars are a guide and act as information only. All our details are given in good faith and believed to be correct at the time of printing but they don't form part of an offer or contract. No Winkworth employee has authority to make or give any representation or warranty in relation to this property. All fixtures and fittings, whether fitted or not are deemed removable by the vendor unless stated otherwise and room sizes are measured between internal wall surfaces, including furnishings.

Winkworth