



CLAPTON SQUARE, LONDON, E5
£650,000 LEASEHOLD

A STUNNING TWO BEDROOM TWO BATHROOM NEO-GEORGIAN APARTMENT OVERLOOKING CLAPTON SQUARE.

Hackney | 020 8986 4216 | hackney@winkworth.co.uk

Winkworth

[winkworth.co.uk](https://www.winkworth.co.uk)

See things differently



DESCRIPTION:

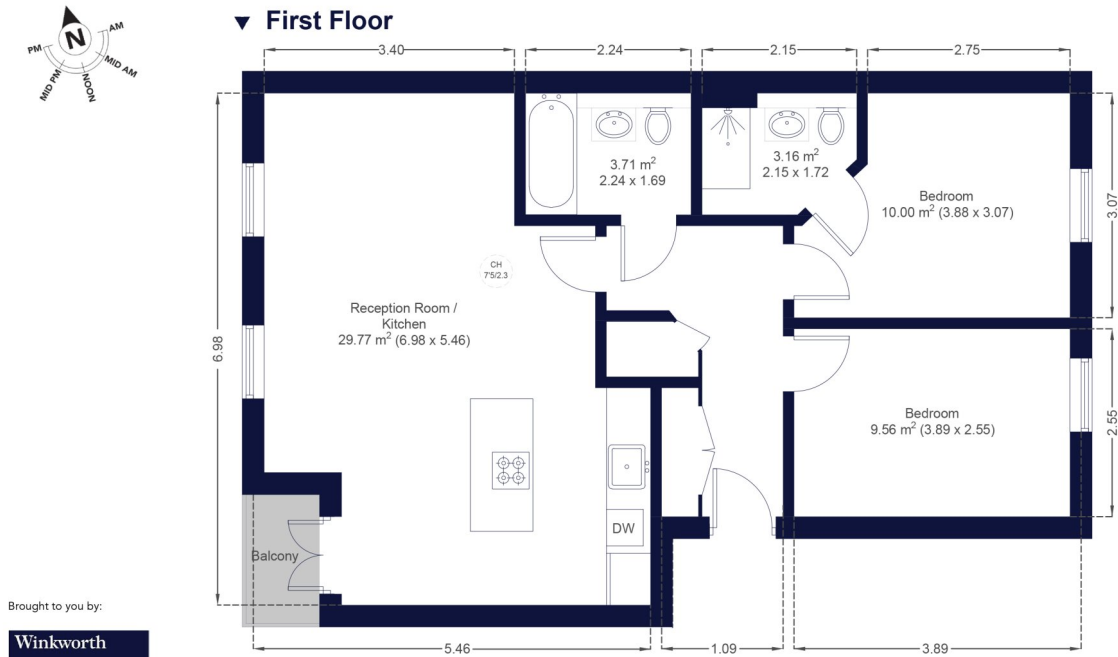
A beautiful, modern two-bedroom two-bathroom Neo-Georgian Apartment overlooking Clapton Square. The property benefits from contemporary decor & well-proportioned accommodation; comprising two double bedrooms one of which has an ensuite shower room and built in storage, a family bathroom suite, a bright and spacious south-west facing reception flooded with natural light due to the amazing floor to ceiling windows, a beautiful open-plan and tastefully modernised island kitchen and a private balcony with views across the square.

The development offers a secure entry phone system and tranquillity from the hustle and bustle, with this section of Clapton Square being closed off to any through traffic. Transport links are excellent via the overground links at Hackney Central and Hackney Downs, providing easy access to the City and the West End. Many favoured Parks are nearby including Hackney Downs, London Fields and Hackney Marshes, as well as a diverse mix of restaurants and independent shops.

Winkworth



Winkworth



This plan is for layout guidance only and is not to scale unless stated. All dimensions, including windows, doors, fittings, and the total area, are approximate measurements. Produced by a



Certified
Property
Measurer

This floorplan is for illustration purposes only and is not to scale. The position and size of doors, windows, appliances and other features are approximate.

Score	Energy rating	Current	Potential
92+	A		
81-91	B	82 B	83 B
69-80	C		
55-68	D		
39-54	E		
21-38	F		
1-20	G		



<https://www.winkworth.co.uk/sale/property/HAC250276>

Tenure: Leasehold

Term: 103 year and 0 months

Service Charge: £3000 per annum

Ground Rent: £ 500 Annually (subject to increase)

Council Tax Band: D

Where no figures are shown, we have been unable to ascertain the information. All figures that are shown were correct at the time of printing.

Hackney | 020 8986 4216 | hackney@winkworth.co.uk

Winkworth

[winkworth.co.uk](https://www.winkworth.co.uk)

See things differently

Winkworth wishes to inform prospective buyers and tenants that these particulars are a guide and act as information only. All our details are given in good faith and believed to be correct at the time of printing but they don't form part of an offer or contract. No Winkworth employee has authority to make or give any representation or warranty in relation to this property. All fixtures and fittings, whether fitted or not are deemed removable by the vendor unless stated otherwise and room sizes are measured between internal wall surfaces, including furnishings.