



## Heritage Court, Reading, Berkshire, RG1 7RP

£1,400 per month *Unfurnished*

2  1  1 

Two bedroom second floor apartment situated within a popular converted grade II listed development in the heart of Reading Town Centre and providing easy access to the Oracle shopping centre and mainline train station. Accommodation comprises entrance hall, lounge/dining room, kitchen with appliances, two bedrooms and a three piece bathroom. Off road residents parking included. Available 6th December 2025. Unfurnished.

### KEY FEATURES

- Two bedroom apartment
- Second floor (no lift)
- Open plan living area
- Council tax band C
- Off-road parking
- Available 6th December
- Unfurnished



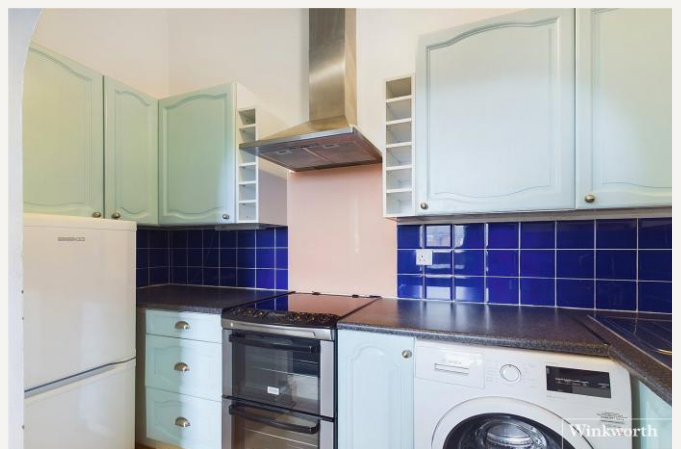
Reading

0118 4022 300 | [reading@winkworth.co.uk](mailto:reading@winkworth.co.uk)

**Winkworth**

for every step...







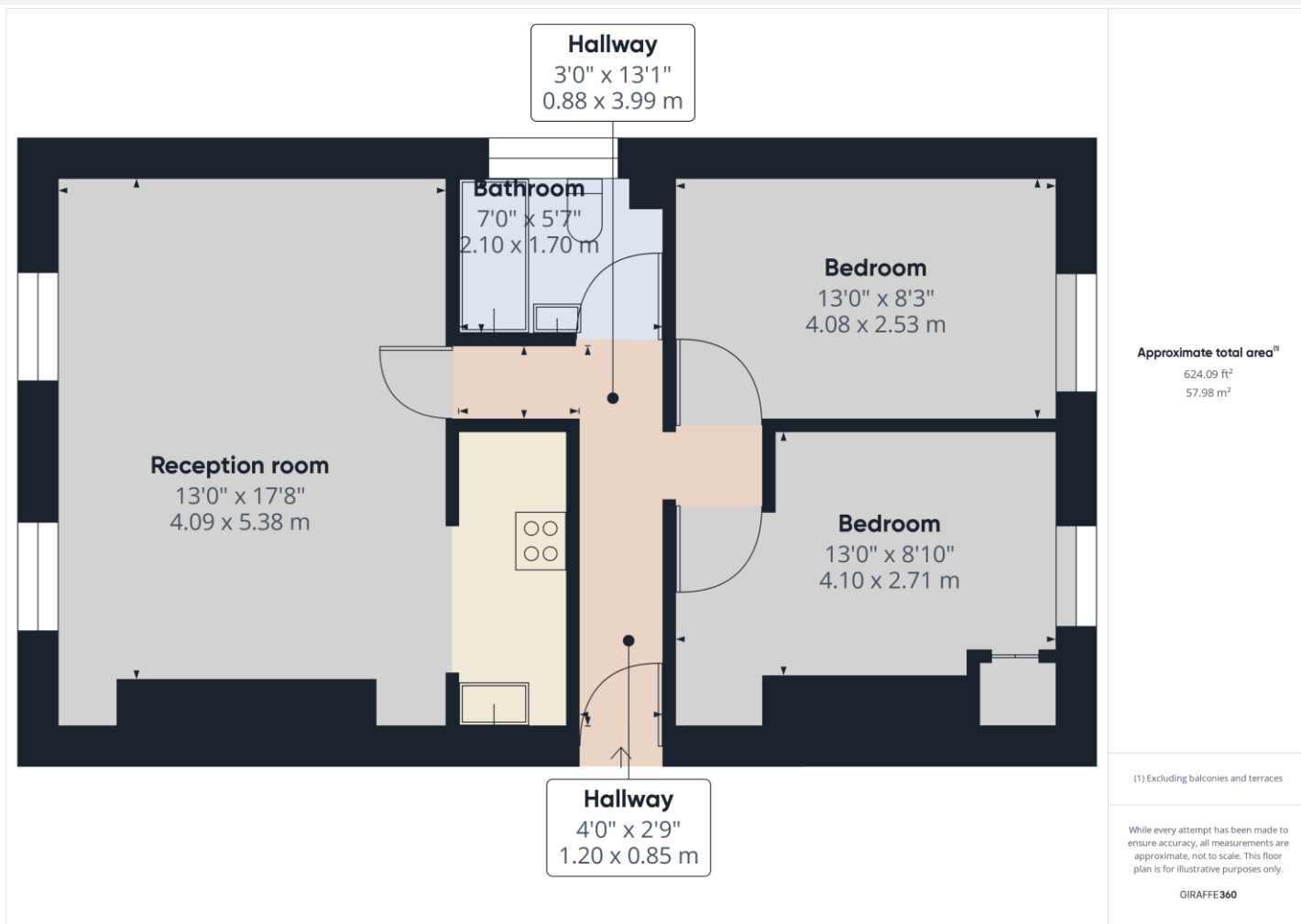


#### MATERIAL INFO

**Deposit:** £1,615.38

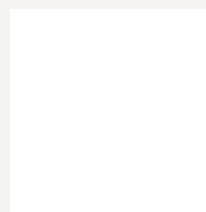
**Holding Deposit:** £323.07

**Council Tax Band:** C



Energy Efficiency Rating		
	Current	Potential
Very energy efficient - lower running costs		
(92+) <b>A</b>		
(81-91) <b>B</b>		
(69-80) <b>C</b>		
(55-68) <b>D</b>		
(39-54) <b>E</b>		
(21-38) <b>F</b>		
(1-20) <b>G</b>		
Not energy efficient - higher running costs		
England, Scotland & Wales	EU Directive 2002/91/EC	

For more information, scan the QR code or visit the link below



<https://www.winkworth.co.uk/rent/property/REA160429>

Where no figures are shown, we have been unable to ascertain the information. All figures that are shown were correct at the time of printing.

## Reading

0118 4022 300 | [reading@winkworth.co.uk](mailto:reading@winkworth.co.uk)

**Winkworth**

for every step...

Winkworth wishes to inform prospective buyers and tenants that these particulars are a guide and act as information only. All our details are given in good faith and believed to be correct at the time of printing but they don't form part of an offer or contract. No Winkworth employee has authority to make or give any representation or warranty in relation to this property. All fixtures and fittings, whether fitted or not are deemed removable by the vendor unless stated otherwise and room sizes are measured between internal wall surfaces, including furnishings.